

Name

Elastic Wool

Designer

Suzanne Tick

Style No.

4067

Use

Upholstery

Content

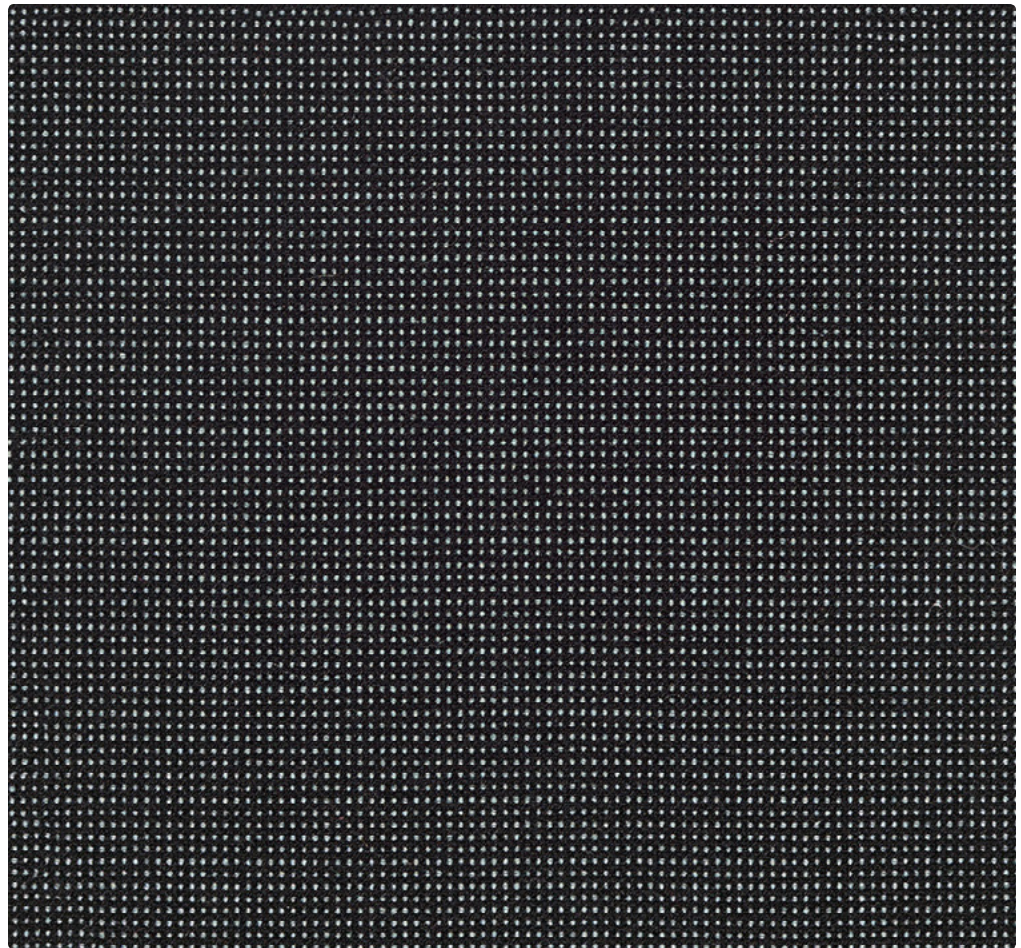
50% Wool +
27% Polyester +
21% Nylon +
2% Elastane

Abrasion

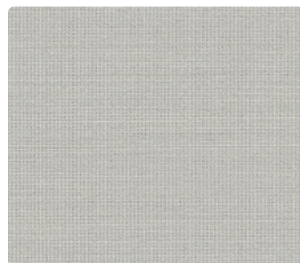
Martindale
100,000 cycles

Environmental

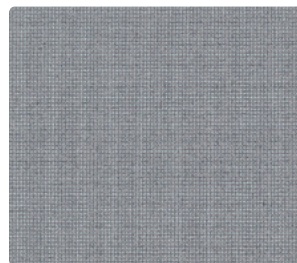
Chemical Finish Free
Heavy Metal Free



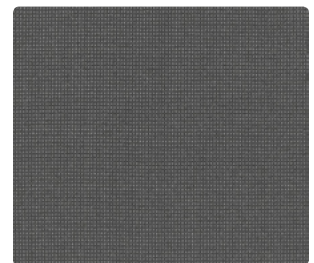
Fortress 4067-01



Clean 4067-04



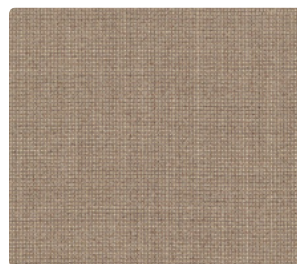
Mercury 4067-03



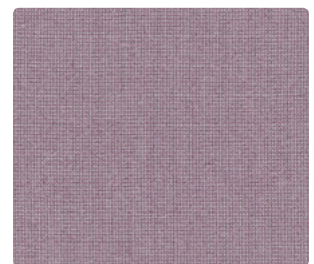
Phantom 4067-02



Tea 4067-06



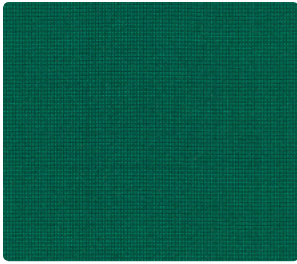
Seed 4067-05



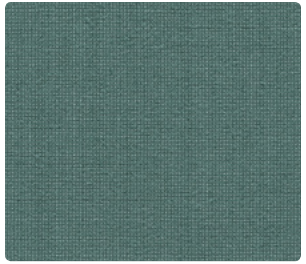
Lovelace 4067-10



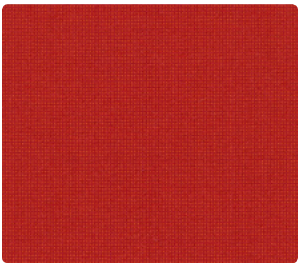
Jovial 4067-11



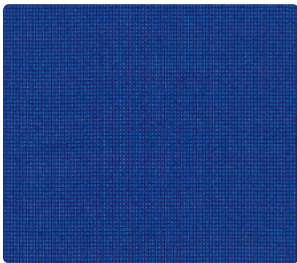
Python 4067-13



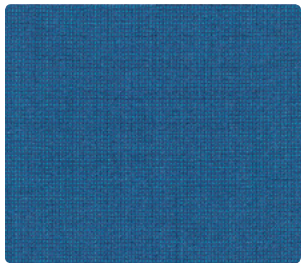
Elm 4067-12



Ruby 4067-08



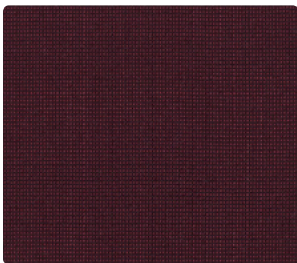
Delphi 4067-15



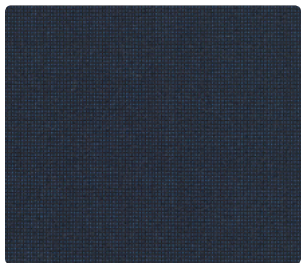
Aegean 4067-14



Rust 4067-07



Ceylon 4067-09



Dart 4067-16



Elastic Wool by Luum

Highlighting the innovation that can be achieved through manufacturing partnerships, Elastic Wool repurposes existing manufacturing technology in response to current needs in the marketplace to create an entirely new material. Today's curvilinear furniture presents new challenges for textile application. In response, elastomeric fiber is introduced to an intimate blend of wool and nylon and woven in conjunction with cationic polyester for a highly upholsterable and durable textile. The plain weave construction, often considered the most rigid structure, takes on an element of playfulness and spontaneity without sacrificing performance. The color palette encompasses bold brights, heathered hues and refined neutrals to highlight the integrity of the wool fiber. Elastic Wool's understated design lends sophistication and elegance to this innovative fiber technology.

Name	Elastic Wool
Style No.	4067
Designer	Suzanne Tick
Specification	Use: Upholstery Content: 50% Wool + 27% Polyester + 21% Nylon + 2% Elastane Weight: 17.5 oz per linear yard Width: 54" Pattern Repeat: None Directional: No
Finish	None
Performance	Abrasion: ASTM D4966 Martindale 100,000 cycles Breaking Strength: ASTM D5034 Warp 124 lbf, Fill 164 lbf Seam Slippage: ASTM D4034 Warp 67 lbf, Fill 72 lbf Colorfastness to Light: AATCC 16, Grade 4 at 40 Hours Colorfastness to Crocking: AATCC 8, Wet Class 4, Dry Class 4.5 Pilling: ASTM D3511 (Brush Pill), Class 4
Flame Retardancy	Cal TB 117-2013, UFAC Class 1, NFPA 260
Maintenance	S, Clean with a dry cleaning or solvent-based cleaning agent. Do not use water-based cleaning products.
Environmental	Chemical Finish Free Heavy Metal Free
Origin	Mexico Wool is a natural product. Color variations are part of the natural beauty of wool and are not considered a defect. Dye lots may vary slightly from samples shown. Samples shown off the bolt.



Canada
 877.705.LUUM
luumtextiles.ca

USA
 877.705.LUUM
luumtextiles.com

International
 919.464.2922
luumtextiles.com

cdn/us/int/01-19

© Luum™ 2019, all rights reserved.

*,™ Trademarks used under license by Luum™, Elastic Wool™

*Certification Marks owned by the Association for Contract Textiles, Inc.

U4-SC-305-4067