

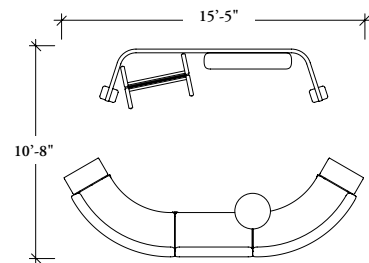
modular seating planning possibility

- Create Analog Collaboration spaces for workshops
- Focus the attention of the seated persons to the presenter
- Add an Easel with Whiteboard for note taking
- Zones Screens and High-Back Benches can define boundaries, even within an open concept of loft space

layout 06: arc shape



Dual Upholstery Shown



| QUANTITY | COMPONENTS | DESCRIPTION | SINGLE UPHOLSTERY | | DUAL UPHOLSTERY | |
|--------------|----------------|---|-------------------|----------------|-----------------|-------------------|
| | | | LIST PRICE | EXTENDED PRICE | LIST PRICE | EXTENDED PRICE |
| 1 | ZNAH42A | Display Shelf, 42\"w, Flat Edge | 135 | 135 | 135 | 135 |
| 1 | ZNCFFWC72B64FN | Fabric Buffer - Workshop Screen C, 72\"h, Part Slots, Both Ends, 64 sq ft, Full Configuration, Interior | 470 | 470 | 470 | 470 |
| 2 | ZNQU | End of Line Table | 600 | 1200 | 600 | 1200 |
| 1 | ZNQSS | Add-On Tablet, Shared, Mid-Run | 825 | 825 | 825 | 825 |
| 1 | ZNAEC36N | Easel, Casters, 36\"w, No Flip Chart Rail | 845 | 845 | 845 | 845 |
| 1 | ZNQD2NS | Straight Upholstery Bench – Hi-Back (Single Upholstery, 2-Seat), No Electrical Module | 2798 | 2798 | 2975 | 2975 |
| 2 | ZNQJNS | 60° Concave Bench – Hi-Back (Single Upholstery), No Electrical Module | 3678 | 7356 | 3855 | 7710 |
| 1 | ZNFWC72B64 | Freestanding Workshop Screen - C, 72\"h, Partial Slots, Both Ends, 64 sq ft Footprint Area | 6264 | 6264 | 6264 | 6264 |
| TOTAL | | | 19893 | LIST | TOTAL | 20424 LIST |

Finishes: Grade 3 Fabric, Laminate Tables. *

See Price Guide for Dual Upholstery Product Codes