

Name

Intone

Designer

Suzanne Tick

Style No.

4048

Use

Upholstery

Content

53% Recycled Polyester +
47% Polyester

Abrasion

Wyzenbeek
60,000 double rubs

Special

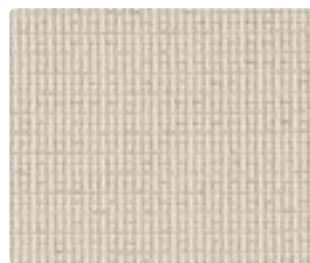
Characteristics
Bleach Cleanable

Environmental

Chemical Finish Free
Recycled Content



Ash 4048-01



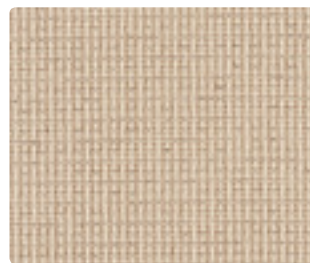
Creme 4048-02



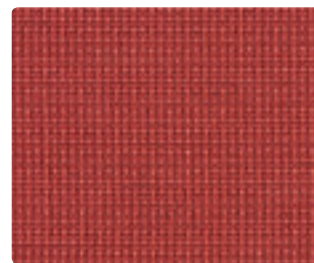
Harbor 4048-03



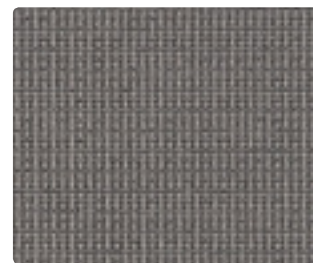
Quicksilver 4048-04



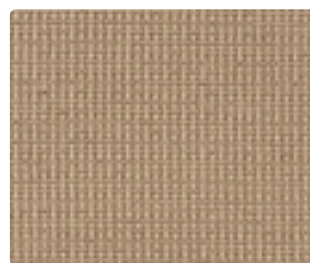
Caraway 4048-05



Oxide 4048-06



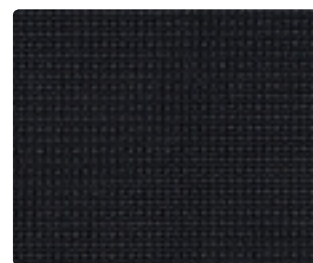
Cinder 4048-07



Lute 4048-08



Pome 4048-09



Eclipse 4048-10

Name

Intone

Style No.

4048

Designer

Suzanne Tick

Specification

Use: Upholstery
Content: 53% Recycled Polyester (34.4% preconsumer, 18.6% postconsumer) + 47% Polyester
Weight: 20.4 ± 0.5 oz per linear yard
Width: 54"
Pattern Repeat: None
Directional: Yes

Finish

None

Performance

Abrasion: ASTM D4157 Wyzenbeek 60,000 double rubs
Breaking Strength: ASTM D5034 Warp 477 lbf, Fill 409 lbf
Seam Slippage: ASTM D4034 Warp 86 lbf, Fill 99 lbf
Colorfastness to Light: AATCC 16, Grade 4 at 40 Hours
Colorfastness to Crocking: AATCC 8, Wet Class 3.5, Dry Class 4
Pilling: ASTM D3511 (Brush Pill), Class 4

Flame Retardancy

Cal TB 117-2013

Maintenance

W, Clean with a water-based cleaning agent. Do not use solvent products. Bleach Cleanable: 10% (9:1 Ratio), wipe with water after solution

Environmental

Chemical Finish Free
Recycled Content

Origin

USA

Dye lots may vary slightly from samples shown. Samples shown off the bolt.



Canada
877.705.LUUM
luumtextiles.ca

USA
877.705.LUUM
luumtextiles.com

International
919.464.2922
luumtextiles.com

cdn/us/int/02-17

© Teknion 2017.

*™ Trademarks of Teknion Corporation and/or its subsidiaries or licensed to it.
*Certification Marks owned by the Association for Contract Textiles, Inc.

NA — SC-305-4048