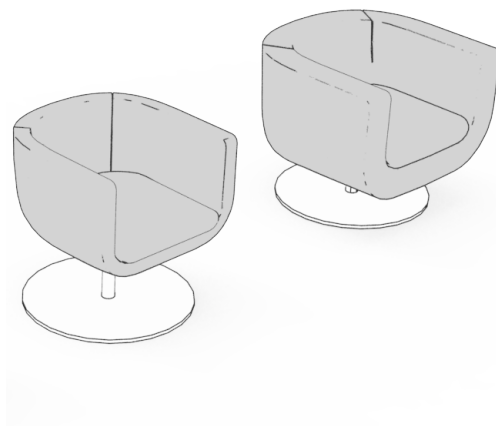


tulip

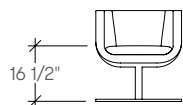
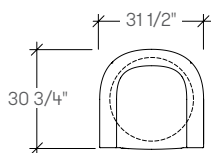
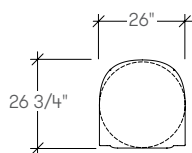
Tulip is a versatile soft seating line that alternates straight and curved lines. Tulip 66 is a slightly larger version of the Tulip 60. Tulip Large is the most generous of the Tulip family with a 360° swivel. The soft cushion makes it comfortable and welcoming for reception, lounge and waiting spaces.

Designer: Jeffrey Bernett

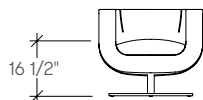


dimensions

- Designed and tested for users up to 110kg/242 lbs
- Meets standard European NEN-16139 requirements



Tulip 66,
Swivel Lounge Chair
BBTCMA



Tulip Large,
Swivel Lounge Chair
BBTCLA

COM/COL material requirement

Yardage is based on a non-patterned fabric. Additional yardage may be required for pattern repeats and the matching required. Leather yield may be affected by the quality of the COL. However, variance in the size of the hides will not affect the yield.

LOUNGE CHAIR, TWO-SEATER AND THREE-SEATER

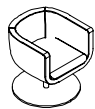
	COM [yards]	COL [sq. ft]
66 Swivel Lounge Chair	3 1/2	63
A Swivel Lounge Chair	4	72

BBTCM tulip 66 swivel lounge chair

Product Options

Style	Upholstery Finish	Frame Finish
A Swivel Lounge Chair	Fabric	C9 Polished Aluminum

Note Swivel is not auto-return to center



Price

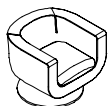
COM	COL	Gr.1	Gr.2	Gr.3	Gr.4	Gr.5	Gr.6	Gr.7	Gr.8	Gr.9	Gr.10	Gr.11
3461	3807	3601	3663	3718	3780	3827	3865	3904	3951	3998	4044	4099
Gr.12	Gr.13	Gr.14	Gr.15	Gr.16	Gr.17	Gr.18	Gr.19	Gr.20	Leather			
4161	4239	4317	4394	4472	4550	4628	4705	4783	LB	LC	LD	
									4647	5067	5207	

BBTCL tulip large swivel lounge chair

Product Options

Style	Upholstery Finish	Frame Finish
A Swivel Lounge Chair	Fabric	C9 Polished Aluminum

Note Swivel is not auto-return to center



Price

COM	COL	Gr.1	Gr.2	Gr.3	Gr.4	Gr.5	Gr.6	Gr.7	Gr.8	Gr.9	Gr.10	Gr.11
3967	4364	4127	4198	4260	4331	4385	4429	4474	4527	4580	4634	4696
Gr.12	Gr.13	Gr.14	Gr.15	Gr.16	Gr.17	Gr.18	Gr.19	Gr.20	Leather			
4767	4856	4945	5034	5123	5211	5300	5389	5478	LB	LC	LD	
									5324	5804	5964	