

Name
Interstice

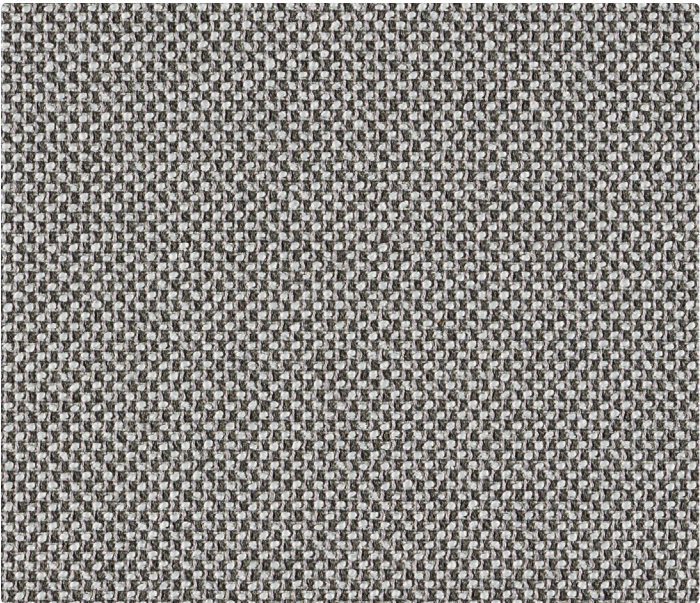
Designer
Suzanne Tick

Style No.
4061

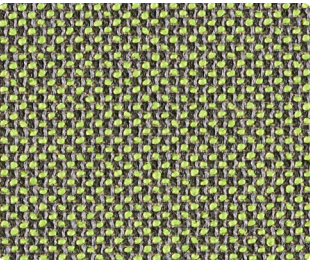
Use
Upholstery

Content
85% Polyester +
12% Cotton +
3% Acrylic

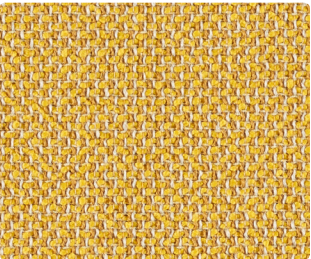
Abrasion
Wyzenbeek
120,000 double rubs**



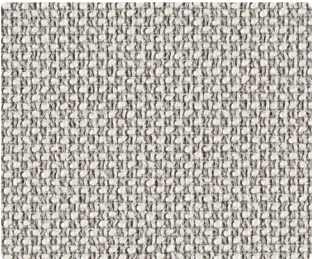
Lacuna 4061-03



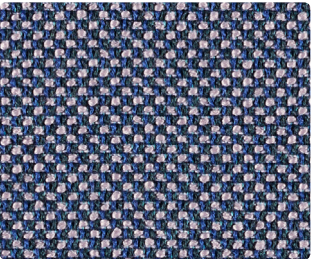
Caesura 4061-12



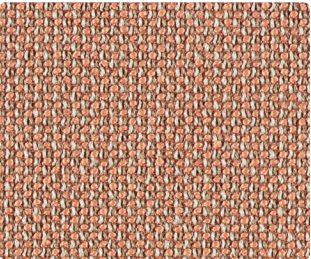
Scintilla 4061-05



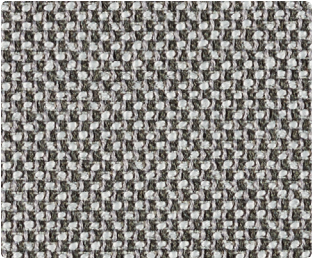
Whit 4061-04



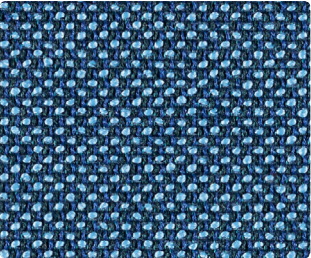
Respite 4061-09



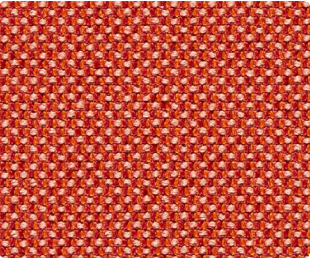
Trace 4061-08



Lacuna 4061-03



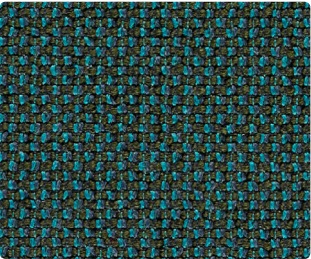
Vestige 4061-10



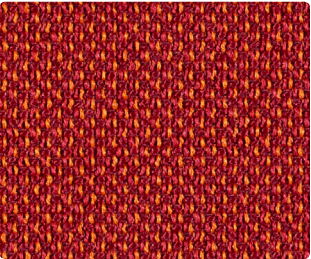
Fragment 4061-06



Inkling 4061-01



Interval 4061-11



Atom 4061-07

Name _____ **Interstice**

Style No. _____ **4061**

Designer Suzanne Tick

Specification

Use: Upholstery
Content: 85% Polyester + 12% Cotton + 3% Acrylic
Weight: 11.7 oz per linear yard
Width: 55"
Pattern Repeat: None
Directional: No

Finish Acrylic Backing

Performance

Abrasion: ASTM D4157 Wyzenbeek 120,000 double rubs**
Breaking Strength: ASTM D5034 Warp 193 lbf, Fill 214 lbf
Seam Slippage: ASTM D4034 Warp 108 lbf, Fill 117 lbf
Colorfastness to Light: AATCC 16, Grade 4 at 40 Hours
Colorfastness to Crocking: AATCC 8, Wet Class 4.5, Dry Class 4.5
Pilling: ASTM D3511 (Brush Pill), Class 5

Flame Retardancy Cal TB 117-2013

Maintenance S, Clean with a dry cleaning or solvent-based cleaning agent.
Do not use water-based cleaning products.

Origin Italy

Dye lots may vary slightly from samples shown. Samples shown off the bolt.



Canada
877.705.LUUM
luumtextiles.ca

USA
877.705.LUUM
luumtextiles.com

International
919.464.2922
luumtextiles.com

cdn/us/int/05-18

© Luum™ 2018, all rights reserved.
*,™ Trademarks used under license by Luum™, Interstice™
**Multiple factors affect fabric durability and appearance retention, including end-user application and proper maintenance.
Wyzenbeek results above 100,000 double rubs have not been shown to be a reliable indicator of increased fabric lifespan.
*Certification Marks owned by the Association for Contract Textiles, Inc.