

**Name**

Adage

**Designer**

Suzanne Tick

**Style No.**

4069

**Use**

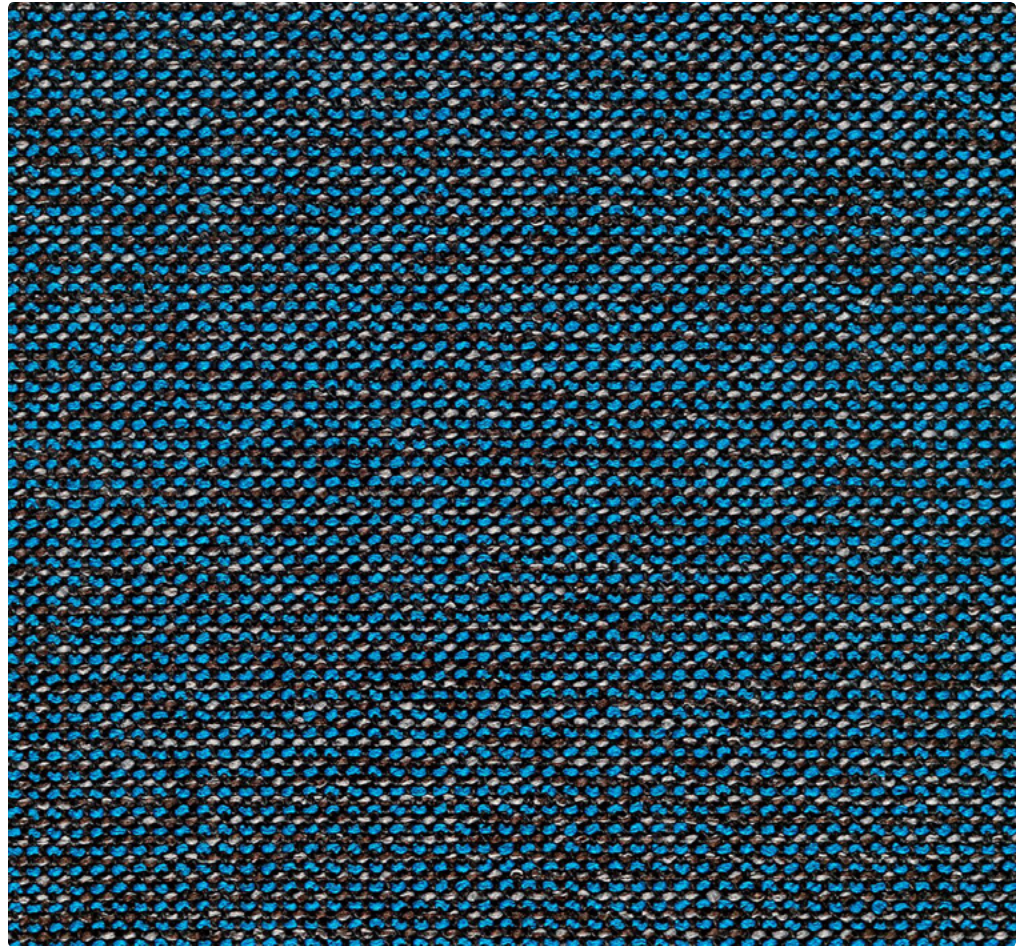
Upholstery

**Content**

82% Polyester +  
14% Cotton +  
4% Acrylic

**Abrasion**

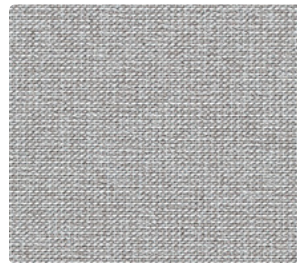
Martindale  
100,000 cycles



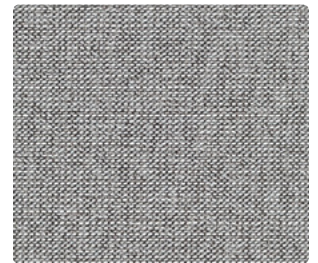
Petrol 4069-18



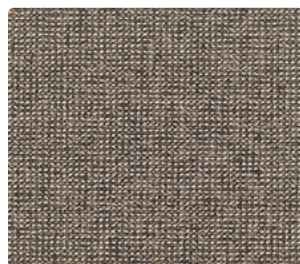
Valence 4069-07



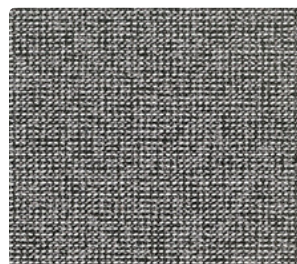
Singularity 4069-06



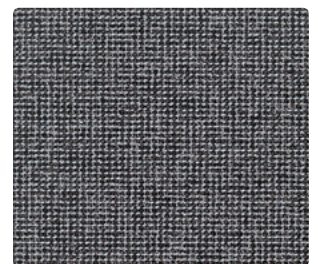
Chromite 4069-05



Halite 4069-08

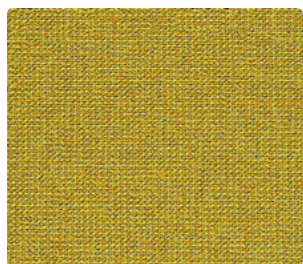


Splice 4069-04

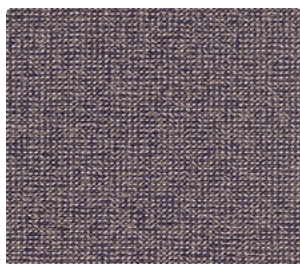


Carbon Fiber 4069-03

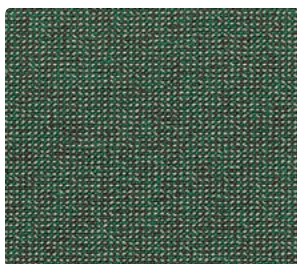




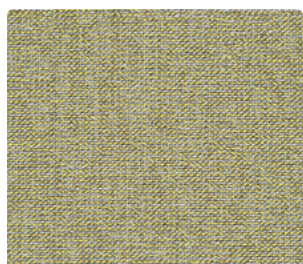
Photon 4069-14



Orchill 4069-12



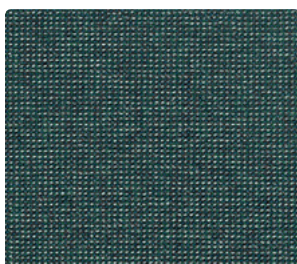
Canopy 4069-16



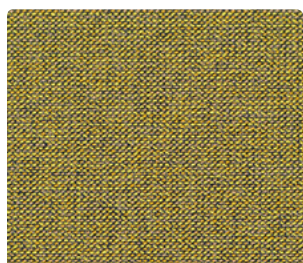
Halogen 4069-15



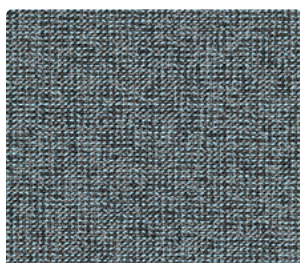
Amethyst 4069-20



Raw Jade 4069-17



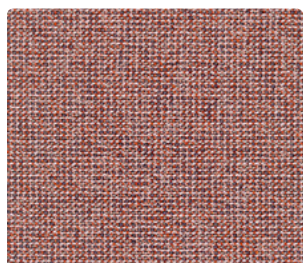
Holograph 4069-13



Diffraction 4069-19



Petrol 4069-18



Quartzite 4069-09



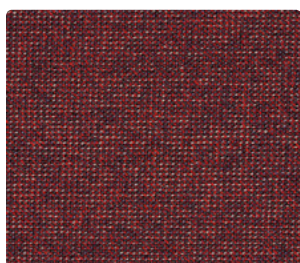
Pascal 4069-21



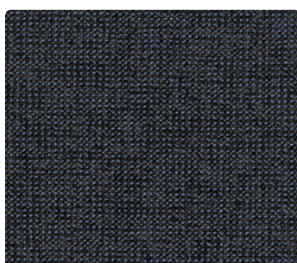
Anthracite 4069-02



Rubelite 4069-10



Thermite 4069-11



Script 4069-01





# Adage by Luum

Adage brings hand-woven techniques to industry front lines. Material and color are intertwined in a deceptively simple and balanced structure, creating a multi-color texture with an enhanced visual effect. By introducing these unexpected variations to otherwise mechanical processes, Adage conveys a hand-woven sensibility while maintaining the ideal performance qualities for contemporary environments. This satisfyingly chunky texture comes in 21 colors - a palette that encompasses a broad range of neutrals and colors in a variety of saturation levels.

Name \_\_\_\_\_

# Adage

Style No. \_\_\_\_\_

## 4069

**Designer**

Suzanne Tick

**Specification**

Use: Upholstery  
Content: 82% Polyester + 14 Cotton + 4% Acrylic  
Weight: 21.3 oz per linear yard  
Width: 55"  
Pattern Repeat: None  
Directional: No

**Finish**

Acrylic Backing

**Performance**

Abrasion: ASTM D4157 Wyzenbeek 100,000 double rubs  
Breaking Strength: ASTM D5034 Warp 264 lbf, Fill 166 lbf  
Seam Slippage: ASTM D4034 Warp 71.5 lbf, Fill 86 lbf  
Colorfastness to Light: AATCC 16, Grade 4.5 at 40 Hours  
Colorfastness to Crocking: AATCC 8, Wet Class 4.5, Dry Class 5  
Pilling: ASTM D3511 (Brush Pill), Class 5

**Flame Retardancy**

Cal TB 117-2013

**Maintenance**

S, Clean with a dry cleaning or solvent-based cleaning agent.  
Do not use water-based cleaning products.

**Origin**

Italy

Dye lots may vary slightly from samples shown. Samples shown off the bolt.



**Canada**  
877.705.LUUM  
luumtextiles.ca

**USA**  
877.705.LUUM  
luumtextiles.com

**International**  
919.464.2922  
luumtextiles.com

cdn/us/int/01-19

© Luum™ 2019, all rights reserved.

®,™ Trademarks used under license by Luum™, Adage™

\*Certification Marks owned by the Association for Contract Textiles, Inc.

U5-SC-305-4069