

**Name**

Fortis

**Style No.**

4025

**Use**

Leather

**Content**

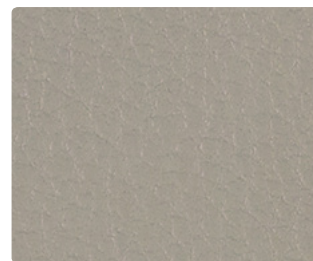
European Full Grain  
Semi-Aniline Dyed  
Cowhide

**Environmental**

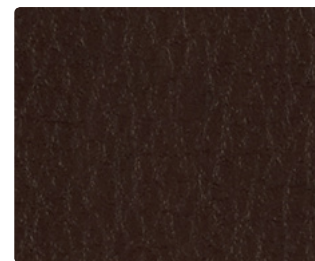
Chrome Free



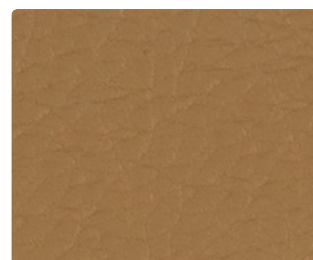
Canyon 4025-01



Bone 4025-02



Terra 4025-04



Nugget 4025-05



Black Rock 4025-07

**Name**

**Fortis**

**Style No.**

**4025**

**Specification**

Use: Leather

Content: European Full Grain Semi-Aniline Dyed Cowhide

Weight: 3.2 oz per square foot

Thickness: 1.5 mm ± 0.2 mm

Hide Size: 55 sq ft average

**Finish**

Water Based Light Protective Topcoat

**Performance**

Tear Strength: DIN EN ISO 3377-2, >40 N

Colorfastness to Light: AATCC 16, Grade 4

Colorfastness to Rubbing: AATCC 8, Wet Class 4, Dry Class 4

Finish Adhesion: DIN EN ISO 5402, >2.5 N/cm

**Flame Retardancy**

Cal TB 117-2013

**Environmental**

Chrome Free

**Origin**

Austria

Dye lots may vary slightly from samples shown.

**Canada**  
877.705.LUUM  
[luumtextiles.ca](http://luumtextiles.ca)

**USA**  
877.705.LUUM  
[luumtextiles.com](http://luumtextiles.com)

**International**  
919.464.2922  
[luumtextiles.com](http://luumtextiles.com)

cdn/us/int/05-16

© Teknion 2016.

\*.™ Trademarks of Teknion Corporation and/or its subsidiaries or licensed to it.

Like all natural products, leather may vary slightly in grain texture and color than shown in samples. Because each hide is unique, minor variations between hides can be expected. The beauty of our leather can be found in the softness, breathability and the natural visual beauty of real hides. Full Grain leather hides are sourced from the highest quality suppliers of natural upholstery leather. Full Grain leather is not corrected and is appreciated for its natural characteristics and grain pattern and supple hand that comes from minimal finishing.

LD — SC-305-4025