

Name

Fortis

Style No.

4025

Use

Leather

Content

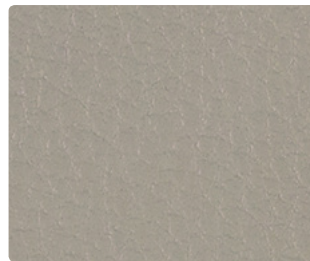
European Full Grain
Semi-Aniline Dyed
Cowhide

Environmental

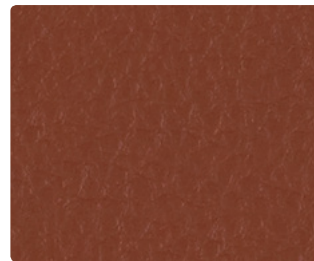
Chrome Free



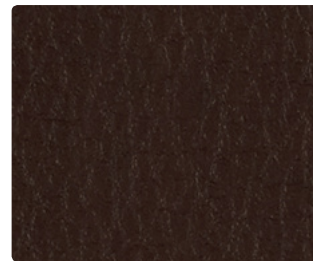
Canyon 4025-01



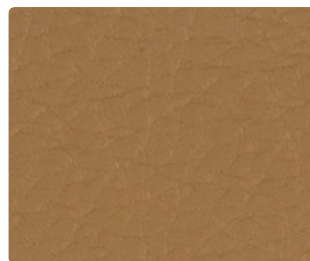
Bone 4025-02



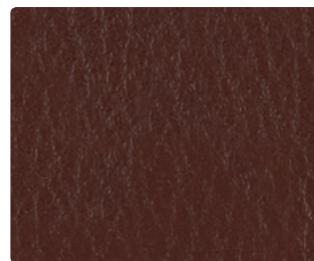
Brick 4025-03



Terra 4025-04



Nugget 4025-05



Oxtail 4025-06



Black Rock 4025-07

Name

Fortis

Style No.

4025

Specification

Use: Leather

Content: European Full Grain Semi-Aniline Dyed Cowhide

Weight: 3.2 oz per square foot

Thickness: 1.5 mm ± 0.2 mm

Hide Size: 55 sq ft average

Finish

Water Based Light Protective Topcoat

Performance

Tear Strength: DIN EN ISO 3377-2, >40 N

Colorfastness to Light: AATCC 16, Grade 4

Colorfastness to Rubbing: AATCC 8, Wet Class 4, Dry Class 4

Finish Adhesion: DIN EN ISO 5402, >2.5 N/cm

Flame Retardancy

Cal TB 117-2013

Environmental

Chrome Free

Origin

Austria

Dye lots may vary slightly from samples shown.

Canada

877.705.LUUM
luumtextiles.ca

USA

877.705.LUUM
luumtextiles.com

International

919.464.2922
luumtextiles.com

cdn/us/int/05-16

© Teknion 2016.

*.™ Trademarks of Teknion Corporation and/or its subsidiaries or licensed to it.

Like all natural products, leather may vary slightly in grain texture and color than shown in samples. Because each hide is unique, minor variations between hides can be expected. The beauty of our leather can be found in the softness, breathability and the natural visual beauty of real hides. Full Grain leather hides are sourced from the highest quality suppliers of natural upholstery leather. Full Grain leather is not corrected and is appreciated for its natural characteristics and grain pattern and supple hand that comes from minimal finishing.

LD — SC-305-4025