

Name

Vista

Style No.

1005

Use

Wrapped Wall
Panel

Content

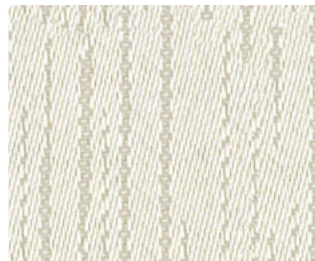
51% Recycled Polyester +
49% Polyester

Environmental

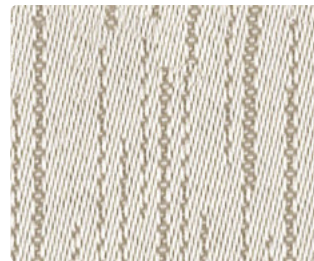
Chemical Finish Free
Recycled Content



Panorama 1005-01



Panorama 1005-01



Glimpse 1005-02



Twine 1005-03



Scene 1005-04



Valley 1005-05



Horizon 1005-06

Name

Vista

Style No.

1005

Specification

Use: Wrapped Wall/Panel
Content: 51% Recycled Polyester (Postconsumer) + 49% Polyester
Weight: 10 oz per linear yard
Width: 66"
Pattern Repeat: Horizontal 14" Vertical 13.4" Random Match
Directional: Yes

Finish

None

Performance

Breaking Strength: ASTM D5034 Warp 274.3 lbf, Fill 242.3 lbf
Colorfastness to Light: AATCC 16, Grade 4 at 40 Hours
Colorfastness to Crocking: AATCC 8, Wet Class 5, Dry Class 5

Flame Retardancy

ASTM E84 Unadhered Class A or 1

Maintenance

WS, Clean with either a water-based or solvent-based cleaning agent.

Environmental

Chemical Finish Free
Facts 3rd-party certified to NSF/ANSI 336 Gold
Recycled Content

Origin

Canada

Dye lots may vary slightly from samples shown. Samples shown off the bolt.



Canada
877.705.LUUM
luumtextiles.ca

USA
877.705.LUUM
luumtextiles.com

International
919.464.2922
luumtextiles.com

cdn/us/int/05-16

© Teknion 2016.

*.™ Trademarks of Teknion Corporation and/or its subsidiaries or licensed to it.

*Certification Marks owned by the Association for Contract Textiles, Inc.

P1 — SC-305-1005