

**Name**  
Topology

**Designer**  
Suzanne Tick

**Style No.**  
1011

**Use**  
Wrapped Wall  
Panel

**Content**  
53% Recycled Polyester +  
47% Polyester

**Environmental**  
Chemical Finish Free  
Recycled Content



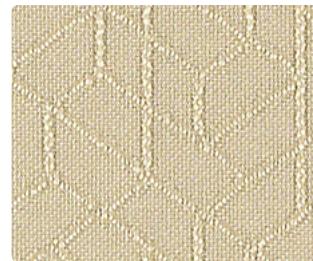
Ceramic 1011-01



Open Space 1011-02



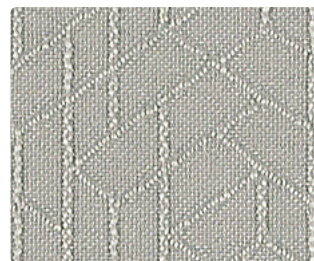
Ceramic 1011-01



Natural 1011-03



Cooling 1011-04



Shadow 1011-05

**Name** \_\_\_\_\_ **Topology**

**Style No.** \_\_\_\_\_ **1011**

**Designer** Suzanne Tick

**Specification** Use: Wrapped Wall/Panel  
Content: 53% Recycled Polyester (Preconsumer) + 47% Polyester  
Weight: 10.5 ± 0.3 oz per linear yard  
Width: 66"  
Pattern Repeat: Horizontal 4.38" Vertical 2.71" Random Match  
Directional: Yes

**Finish** None

**Performance** Breaking Strength: ASTM D5034 Warp 235 lbf, Fill 167 lbf  
Colorfastness to Light: AATCC 16, Grade >4 at 40 Hours  
Colorfastness to Crocking: AATCC 8, Wet Class >3.5, Dry Class >4

**Flame Retardancy** ASTM E84 Unadhered Class A or 1

**Maintenance** WS, Clean with either a water-based or solvent-based cleaning agent.

**Environmental** Chemical Finish Free  
Recycled Content

**Origin** USA

Dye lots may vary slightly from samples shown. Samples shown off the bolt.



**Canada**  
877.705.LUUM  
[luumtextiles.ca](http://luumtextiles.ca)

**USA**  
877.705.LUUM  
[luumtextiles.com](http://luumtextiles.com)

**International**  
919.464.2922  
[luumtextiles.com](http://luumtextiles.com)

cdn/us/int/05-16

© Teknion 2016.

\*.™ Trademarks of Teknion Corporation and/or its subsidiaries or licensed to it.

\*Certification Marks owned by the Association for Contract Textiles, Inc.

P1 — SC-305-1011