

Name

Modulus

Designer

Suzanne Tick

Style No.

4057

Use

Upholstery

Content

75% Recycled

Polyester +

25% Polyester

Abrasion

Wyzenbeek

105,000 double rubs**

Special

Characteristics

Bleach Cleanable

Environmental

Heavy Metal Free

PFOA / PFOS Free

Stain Repellent

Recycled Content



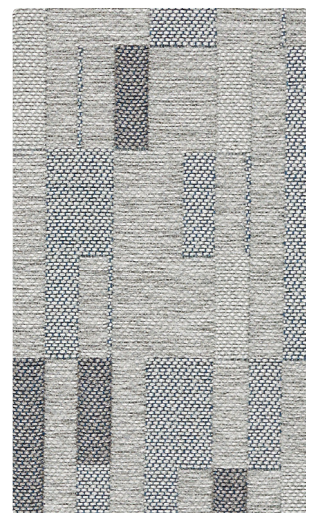
Landscape 4057-02



Plinth 4057-01



Rebar 4057-09



Shadow Play 4057-08



Landscape 4057-02



Form 4057-07



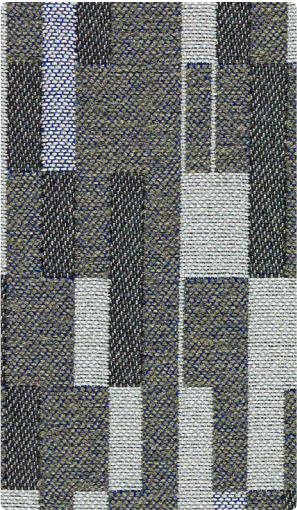
Site 4057-06



Masonry 4057-03



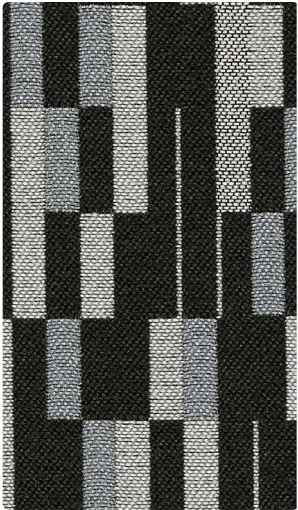
Skylight 4057-05



Spatial 4057-10



Threshold 4057-11



Monument 4057-12



Modulus by Luum

Bricks are one of the earliest and strongest building materials. Depending on the inherent mineral content and firing temperatures, colors can range from pinks, reds, purples to browns and grays. Modulus is directly translated from brickwork patterning. The palette reflects the range of unexpected colors that are possible through variations in the material composition and manufacturing processes.

Name	Modulus
Style No.	4057
Designer	Suzanne Tick
Specification	Use: Upholstery Content: 75% Recycled Polyester (52% Postconsumer, 23% Preconsumer) + 25% Polyester Weight: 19 oz per linear yard Width: 57" Pattern Repeat: Horizontal 14.56" Vertical 15.69" Random Match Directional: Yes
Finish	Acrylic Backing Stain Repellent
Performance	Abrasion: ASTM D4157 Wyzenbeek 105,000 double rubs** Breaking Strength: ASTM D5034 Warp 313 lbf, Fill 323 lbf Seam Slippage: ASTM D4034 Warp 81 lbf, Fill 100 lbf Colorfastness to Light: AATCC 16, Grade 4 at 40 Hours Colorfastness to Crocking: AATCC 8, Wet Class 3, Dry Class 4 Pilling: ASTM D3511 (Brush Pill), Class 4
Flame Retardancy	Cal TB 117-2013, UFAC Class 1, NFPA 260
Maintenance	WS, Clean with either a water-based or solvent-based cleaning agent. Bleach Cleanable: 20% (5:1 Ratio), wipe with water after solution.
Environmental	Heavy Metal Free PFOA / PFOS Free Stain Repellent Recycled Content
Origin	USA
Dye lots may vary slightly from samples shown. Samples shown off the bolt.	



Canada
877.705.LUUM
luumtextiles.ca

USA
877.705.LUUM
luumtextiles.com

International
919.464.2922
luumtextiles.com

cdn/us/int/01-18

© Luum™ 2017, all rights reserved.
*,™ Trademarks used under license by Luum™, Modulus™
**Multiple factors affect fabric durability and appearance retention, including end-user application and proper maintenance.
Wyzenbeek results above 100,000 double rubs have not been shown to be a reliable indicator of increased fabric lifespan.
*Certification Marks owned by the Association for Contract Textiles, Inc.