

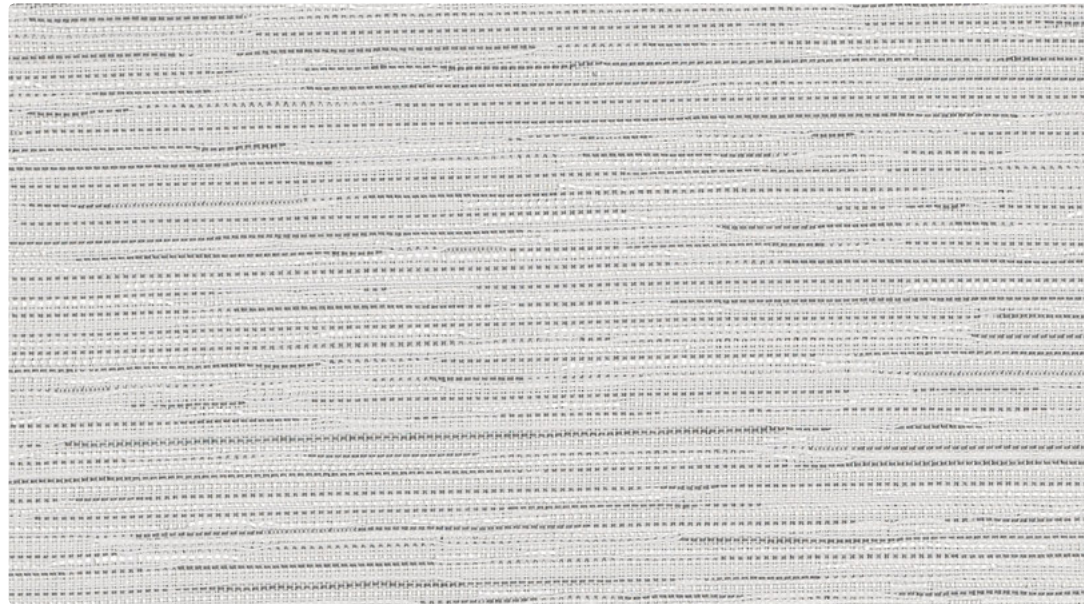
Name
Tangle

Style No.
1009

Use
Wrapped Wall
Panel

Content
81% Recycled Polyester +
19% Polyester

Environmental
Chemical Finish Free
Recycled Content



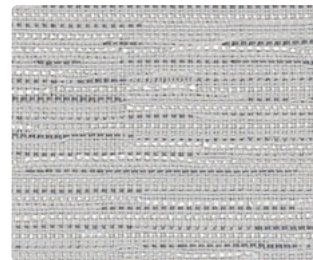
Snarl 1009-01



Interweave 1009-02



Knot 1009-03



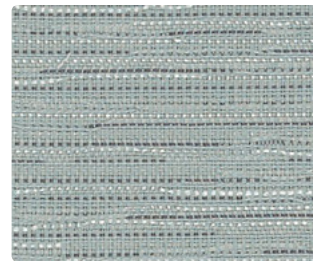
Entwine 1009-04



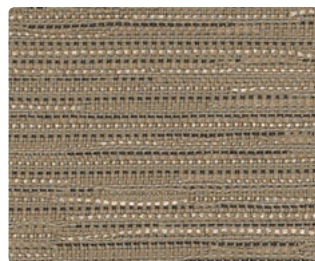
Ravel 1009-05



Kinks 1009-06



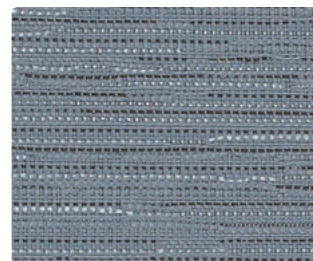
Crook 1009-07



Spangle 1009-08



Tousle 1009-09



Muddle 1009-10

Name **Tangle**
Style No. **1009**

Specification
Use: Wrapped Wall/Panel
Content: 81% Recycled Polyester (Preconsumer) + 19% Polyester
Weight: 13.5 ± 0.3 oz per linear yard
Width: 66"
Pattern Repeat: None
Directional: Yes

Finish None

Performance
Breaking Strength: ASTM D5034 Warp 261 lbf, Fill 200 lbf
Colorfastness to Light: AATCC 16, Grade 4 at 40 Hours
Colorfastness to Crocking: AATCC 8, Wet Class 3.5, Dry Class 4

Flame Retardancy ASTM E84 Unadhered Class A or 1

Maintenance WS, Clean with either a water-based or solvent-based cleaning agent.

Environmental
Chemical Finish Free
Recycled Content

Origin USA

Dye lots may vary slightly from samples shown. Samples shown off the bolt.



Canada
877.705.LUUM
luumtextiles.ca

USA
877.705.LUUM
luumtextiles.com

International
919.464.2922
luumtextiles.com

cdn/us/int/05-16

© Teknion 2016.

*™ Trademarks of Teknion Corporation and/or its subsidiaries or licensed to it.
*Certification Marks owned by the Association for Contract Textiles, Inc.

PA — SC-305-1009