

**Name**  
Complement

**Designer**  
Suzanne Tick

**Style No.**  
4042

**Use**  
Upholstery  
Wrapped Wall  
Panel

**Content**  
100% Polyester

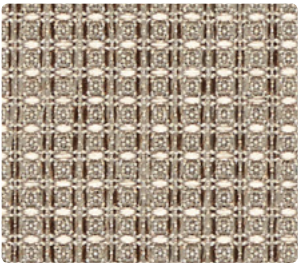
**Abrasion**  
Wyzenbeek  
65,000 double rubs



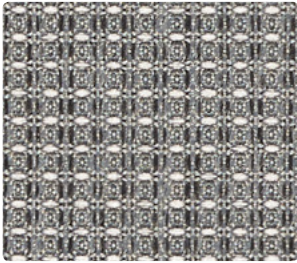
Roan 4042-05



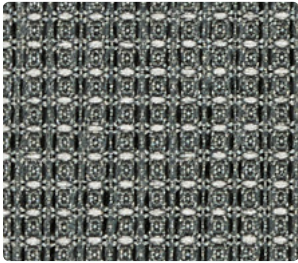
Sea Salt 4042-04



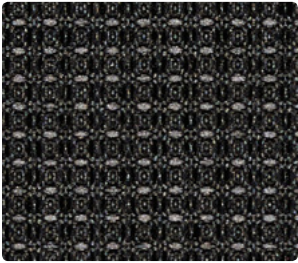
Roan 4042-05



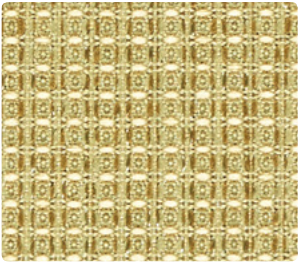
Grey Wolf 4042-03



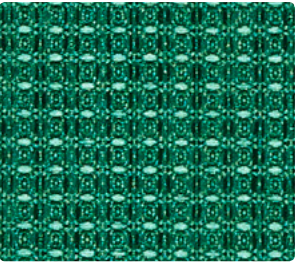
Dusk 4042-02



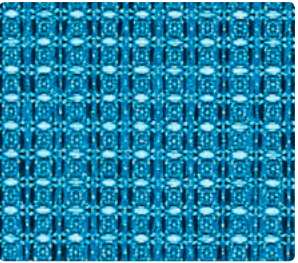
Nightfall 4042-01



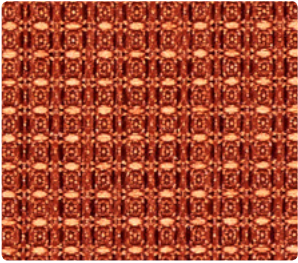
Amarillo 4042-06



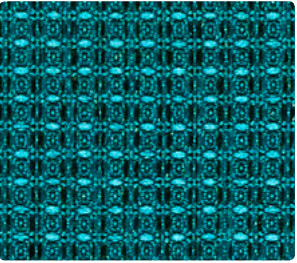
Jade 4042-13



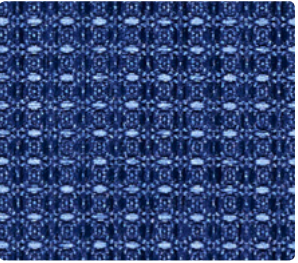
Fresh Air 4042-11



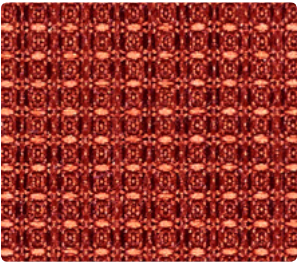
Arancia 4042-07



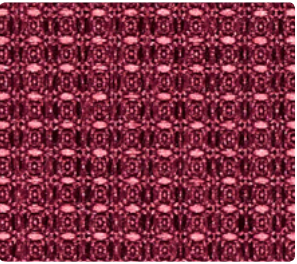
Peacock 4042-12



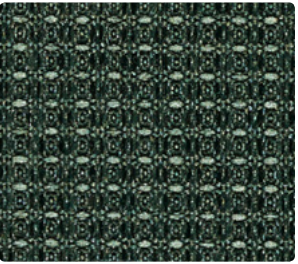
Larkspur 4042-10



Carnelian 4042-08



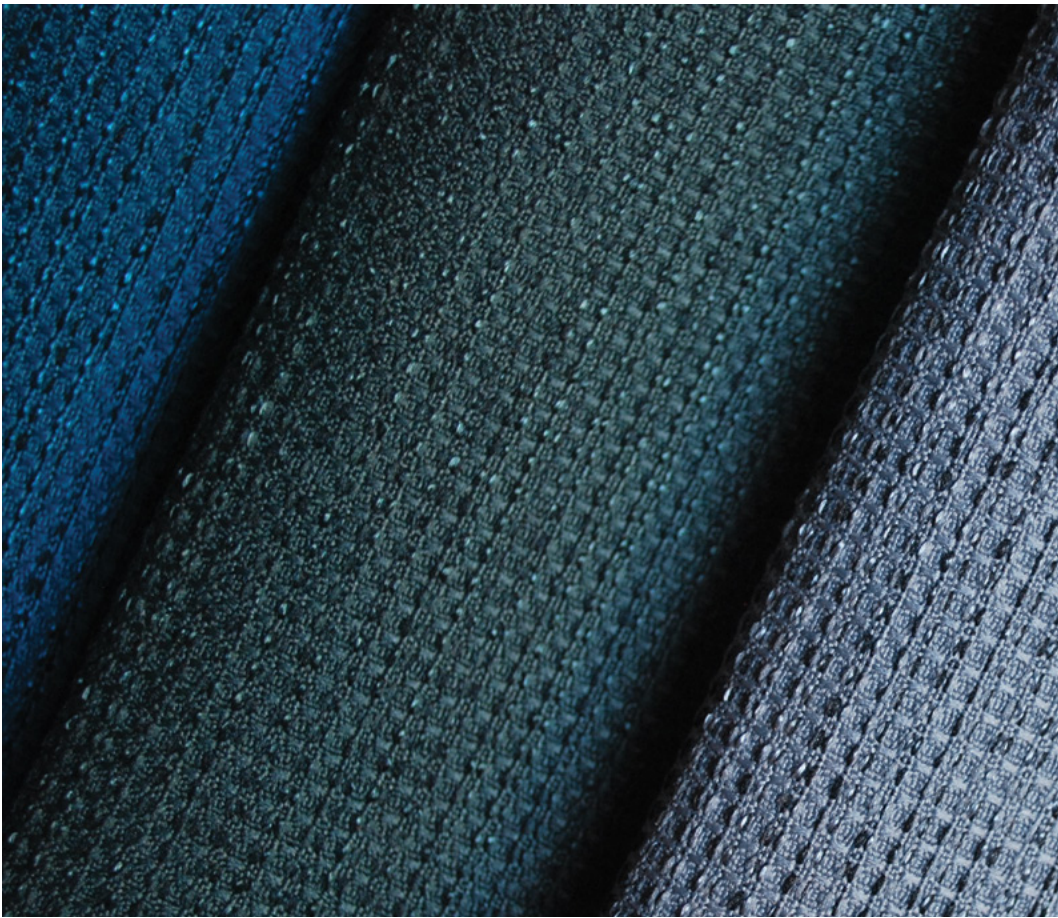
Garnet 4042-09



Pine 4042-14



Complement



# Complement by Luum

For Complement, we took a traditional honeycomb weave structure and softened it with organic movement. Randomly occurring accents, both dark and lustrous, create this movement and add depth to a seemingly straightforward solid. The long colorline of neutrals, bright colors and muted colors is designed for mixing and matching to add texture and interest within a space. A multipurpose fabric, Complement can be used as upholstery, panel, and wrapped wall.

Name

Complement

Style No.

4042

Designer

Suzanne Tick

Specification

Use: Upholstery/Wrapped Wall/Panel  
Content: 100% Polyester  
Weight: 16.4 ± 0.2 oz per linear yard  
Width: 54"  
Pattern Repeat: None  
Directional: Yes

Finish

Latex Backing

Performance

Abrasion: ASTM D4157 Wyzenbeek 65,000 double rubs  
Breaking Strength: ASTM D5034 Warp 219 lbf, Fill 338 lbf  
Seam Slippage: ASTM D4034 Warp 102 lbf, Fill 87 lbf  
Colorfastness to Light: AATCC 16, Grade 4.5 at 40 Hours  
Colorfastness to Crocking: AATCC 8, Wet Class 5, Dry Class 5  
Pilling: ASTM D3511 (Brush Pill) Class 5

Flame Retardancy

Cal TB 117-2013  
ASTM E84 Unadhered Class A or 1

Maintenance

W, Clean with a water-based cleaning agent. Do not use solvent products.

Origin

Canada

Dye lots may vary slightly from samples shown. Samples shown off the bolt.



Canada  
877.705.LUUM  
[luumtextiles.ca](http://luumtextiles.ca)

USA  
877.705.LUUM  
[luumtextiles.com](http://luumtextiles.com)

International  
919.464.2922  
[luumtextiles.com](http://luumtextiles.com)

cdn/us/int/05-16

© Teknion 2016.  
\* ,™ Trademarks of Teknion Corporation and/or its subsidiaries or licensed to it.  
\*Certification Marks owned by the Association for Contract Textiles, Inc.

U2-A2-P2 — SC-305-4042