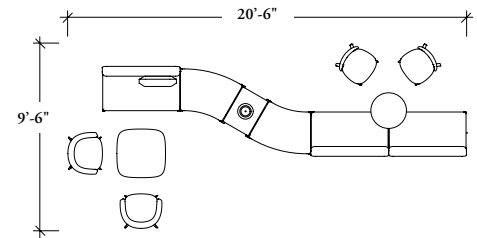


modular seating planning possibility

- Create hybrid spaces that allow small team meetings to occur outside of traditional room or a touchdown workspace
- When space is tight but a soft, non-traditional look is desired; add a jog to the layout, varied back heights and Shared Add-on Tablets mixed with Casual Tables
- Include In-Line Tables and Table Lamps to further delineate sections of the layout
- Shared Add-on Tablets provide a fixed location for gathering

layout 11: compressed wave



Dual Upholstery Shown

QUANTITY	COMPONENTS	DESCRIPTION	SINGLE UPHOLSTERY		DUAL UPHOLSTERY	
			LIST PRICE	EXTENDED PRICE	LIST PRICE	EXTENDED PRICE
1	ZNQR	Bench End Caps (Set of 2)	125	125	125	125
1	ZNQPR	Pillow (Single Upholstery), Single Rectangular	160	160	160	160
1	ZNTTS30	High Soft Square Tea Table, 30"d	281	281	281	281
1	ZNETL4	Table Lamp, Zones Modular Seating In-Line-Table	500	500	500	500
2	ZNMCZ	Zones Side Chair, 4-Wood Legs, No Arms, Plastic Back	584	1168	584	1168
1	ZNQTY	In-Line Table, With Cut Out for Light	815	815	815	815
1	ZNQSS	Add-On Tablet, Shared, Mid-Run	825	825	825	825
2	ZNSP	Zones Club Chair, Swivel Tilt with 4-Prong Base	1135	2270	1135	2270
2	ZNQENS	30° Concave Bench – No Back, No Electrical Module, Single Upholstery	1682	3364	1682	3364
2	ZNQC2ND	Straight Upholstery Bench – Low-Back (Dual Upholstery), 2-Seat, No Electrical Module	2454	4908	2631	5262
1	ZNQD2ND	Straight Upholstery Bench – Hi-Back (Dual Upholstery, 2-Seat, No Electrical Module	2798	2798	2975	2975
			TOTAL	17214 LIST	TOTAL	17743 LIST

Finishes: Grade 3 Fabric, Laminate Tables. *

See Price Guide for Dual Upholstery Product Codes

The following reconfigurations are possible using the same kit of parts.

reconfiguration a

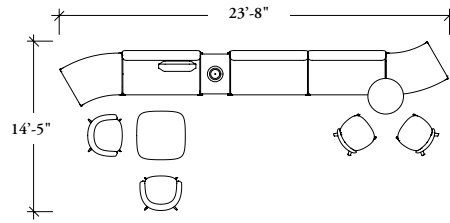


reconfiguration b



modular seating planning possibility

reconfiguration a

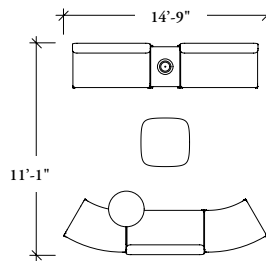


QUANTITY	COMPONENTS	DESCRIPTION	SINGLE UPHOLSTERY		DUAL UPHOLSTERY	
			LIST PRICE	EXTENDED PRICE	LIST PRICE	EXTENDED PRICE
1	ZNQR	Bench End Caps (Set of 2)	125	125	125	125
1	ZNQPR	Pillow (Single Upholstery), Single Rectangular	175	175	175	175
1	ZNTTS30	High Soft Square Tea Table, 30"d	281	281	281	281
1	ZNETL4	Table Lamp, Zones Modular Seating In-Line-Table	500	500	500	500
2	ZNMCZ	Zones Side Chair, 4-Wood Legs, No Arms, Plastic Back	584	1168	584	1168
1	ZNQTY	In-Line Table, With Cut Out for Light	815	815	815	815
1	ZNQSS	Add-On Tablet, Shared, Mid-Run	825	825	825	825
2	ZNSP	Zones Club Chair, Swivel Tilt with 4-Prong Base	1135	2270	1135	2270
2	ZNQENS	30° Concave Bench-No Back, No Electrical Module, Single Upholstery	1682	3364	1682	3364
2	ZNQC2NS	Straight Upholstery Bench – Low-Back (Single Upholstery), 2-Seat, No Electrical Module	2454	4908	2631	5262
1	ZNQD2NS	Straight Upholstery Bench – Hi-Back (Single Upholstery, 2-Seat, No Electrical Module	2798	2798	2975	2975
			TOTAL	17229 LIST	TOTAL	17760 LIST

Finishes: Grade 3 Fabric, Laminate Tables. *

See Price Guide for Dual Upholstery Product Codes

reconfiguration b



QUANTITY	COMPONENTS	DESCRIPTION	SINGLE UPHOLSTERY		DUAL UPHOLSTERY	
			LIST PRICE	EXTENDED PRICE	LIST PRICE	EXTENDED PRICE
1	ZNQR	Bench End Caps (Set of 2)	125	250	125	250
1	ZNTTS30	High Soft Square Tea Table, 30"d	281	281	281	281
1	ZNETL4	Table Lamp, Zones Modular Seating In-Line-Table	500	500	500	500
1	ZNQTY	In-Line Table, With Cut Out for Light	815	815	815	815
1	ZNQSS	Add-On Tablet, Shared, Mid-Run	825	825	825	825
2	ZNQENS	30° Concave Bench-No Back, No Electrical Module, Single Upholstery	1682	3364	1682	3364
2	ZNQC2NS	Straight Upholstery Bench – Low-Back (Single Upholstery), 2-Seat, No Electrical Module	2454	4908	2631	5262
1	ZNQD2NS	Straight Upholstery Bench – Hi-Back (Single Upholstery, 2-Seat, No Electrical Module	2798	2798	2975	2975
ADDITIONAL COMPONENTS REQUIRED FOR RECONFIGURATION A						
1	ZNQR	Bench End Caps (Set of 2)	125	125	125	125
			TOTAL	13741 LIST	TOTAL	14272 LIST

Finishes: Grade 3 Fabric, Laminate Tables. *

See Price Guide for Dual Upholstery Product Codes