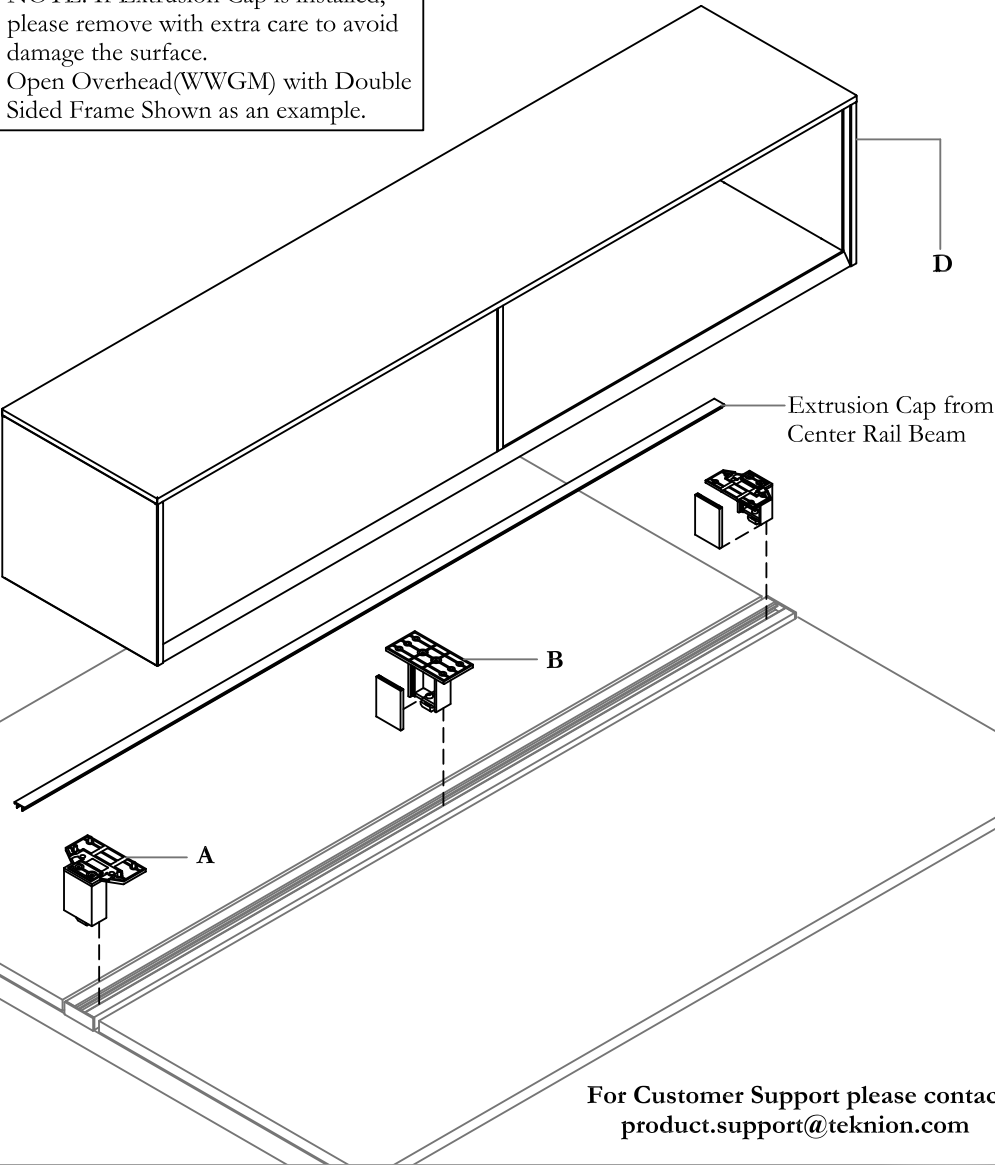


Section: STORAGE

Description: STANCHIONS, SPINE MOUNTED SHELF AND OVERHEADS (SINGLE MOUNT)

(WWGT, WWGP, WWGS, WWGM,
WWGCG, WWGCM, WWGCW, WWGF)

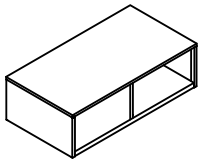
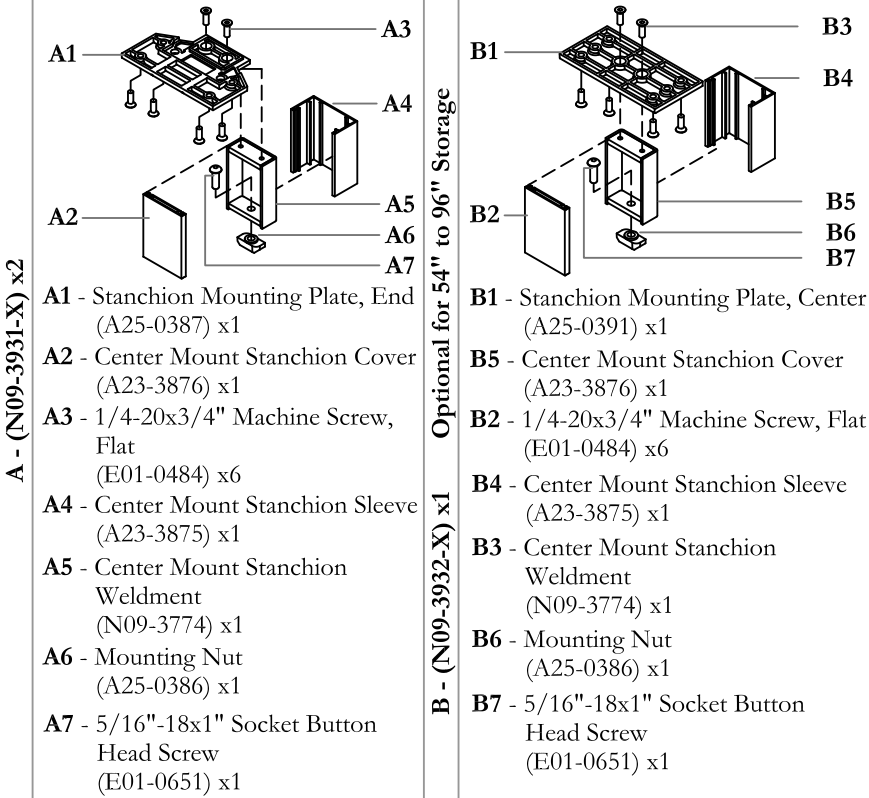
NOTE: If Extrusion Cap is installed,
please remove with extra care to avoid
damage the surface.
Open Overhead(WWGM) with Double
Sided Frame Shown as an example.



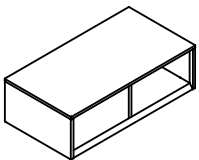
For Customer Support please contact
product.support@teknion.com

Part and Product Identification

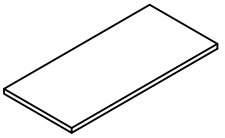
WWGT



Or



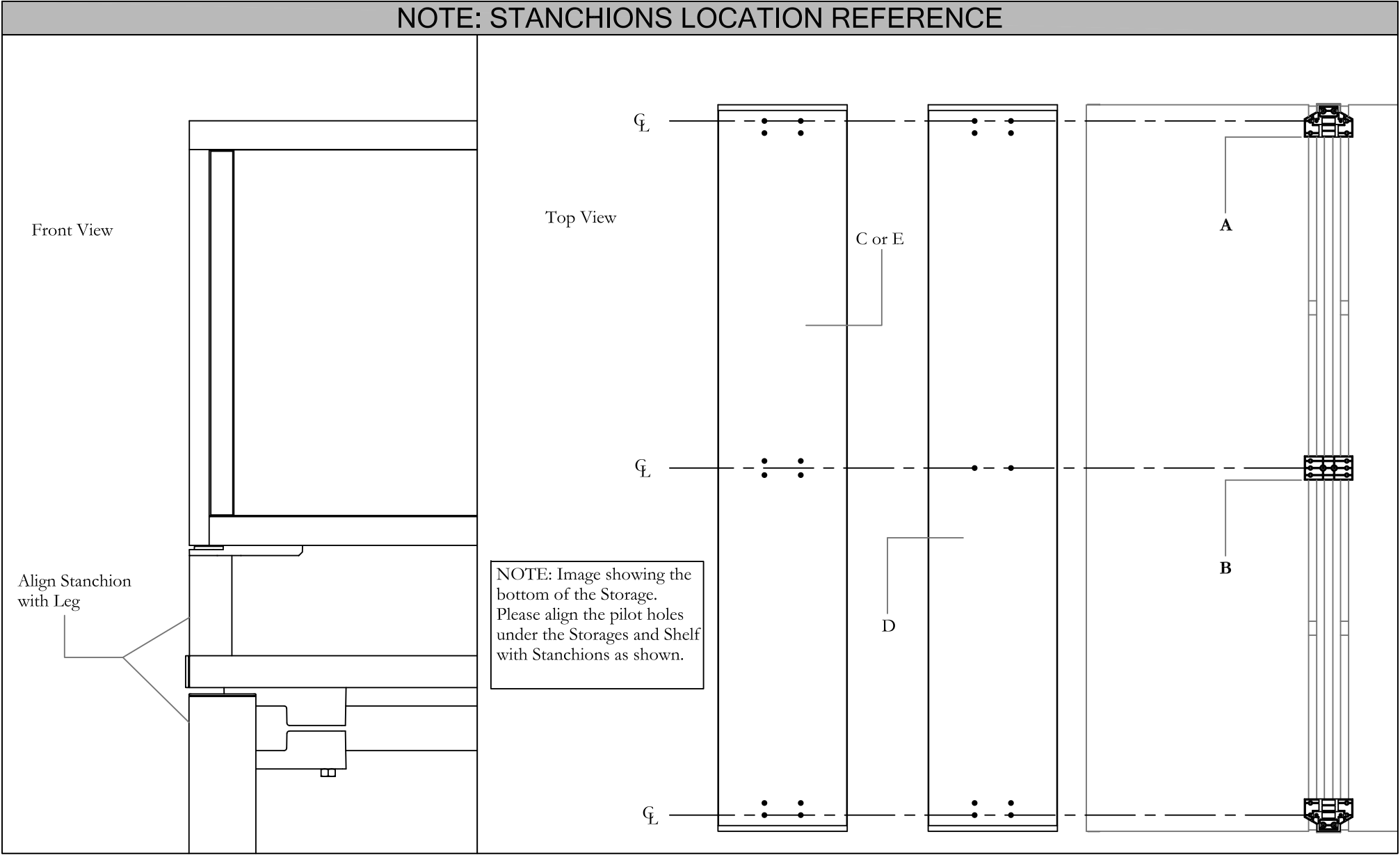
Or



C - Open/Closed
Wood Overhead
(WWGP) x1 or
(WWGS) x1

D - Open/Close
Overhead with
Glass/Metal/Wood Doors
(WWGM) x1 or
(WWGCG) x1 or
(WWGCM) x1 or
(WWGCW) x1

E - Wood Shelf
(WWGF) x1



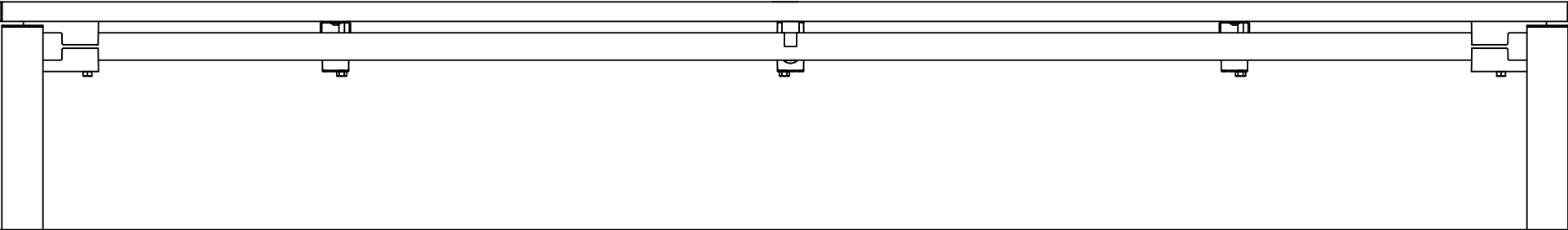
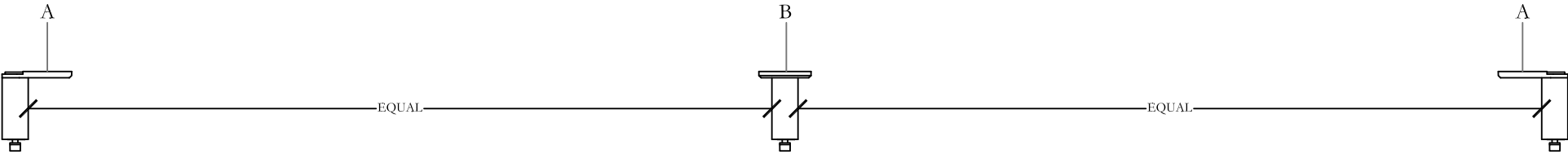
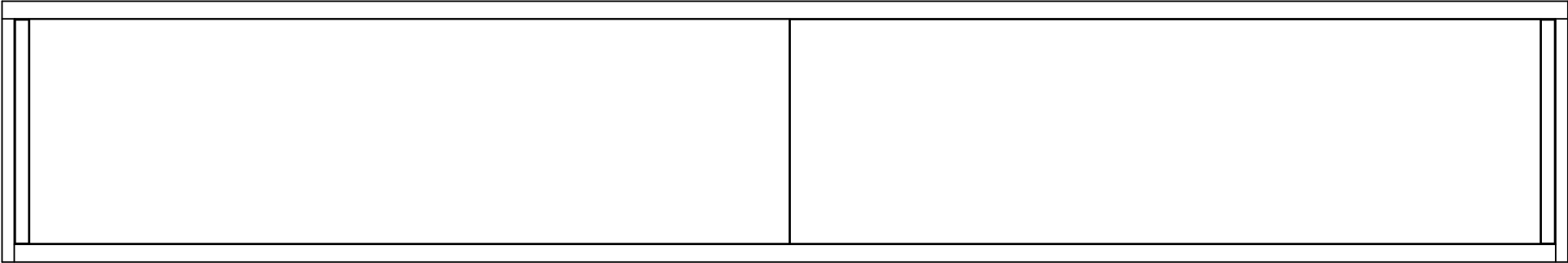
NOTE: Please align the Stanchion with Leg as shown. Please align the location for Shelve, Wood and Metal Storage with Stanchions as shown.

Section: **STORAGE**

Description: **STANCHIONS, SPINE MOUNTED SHELF AND OVERHEADS (SINGLE MOUNT)**

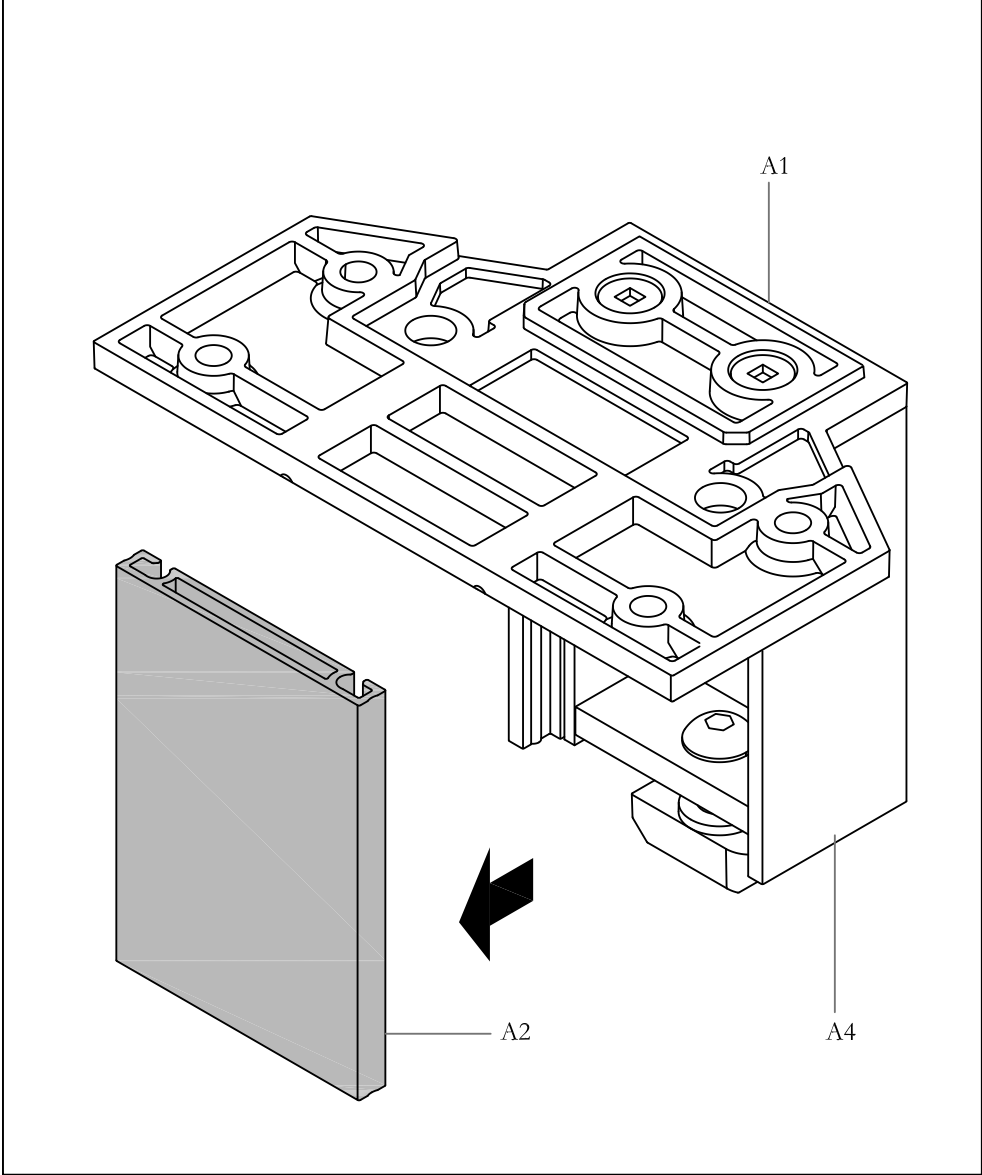
Date: Feb 2017 Page No: 3 of 10
INT_101a

NOTE: STANCHIONS LOCATION REFERENCE



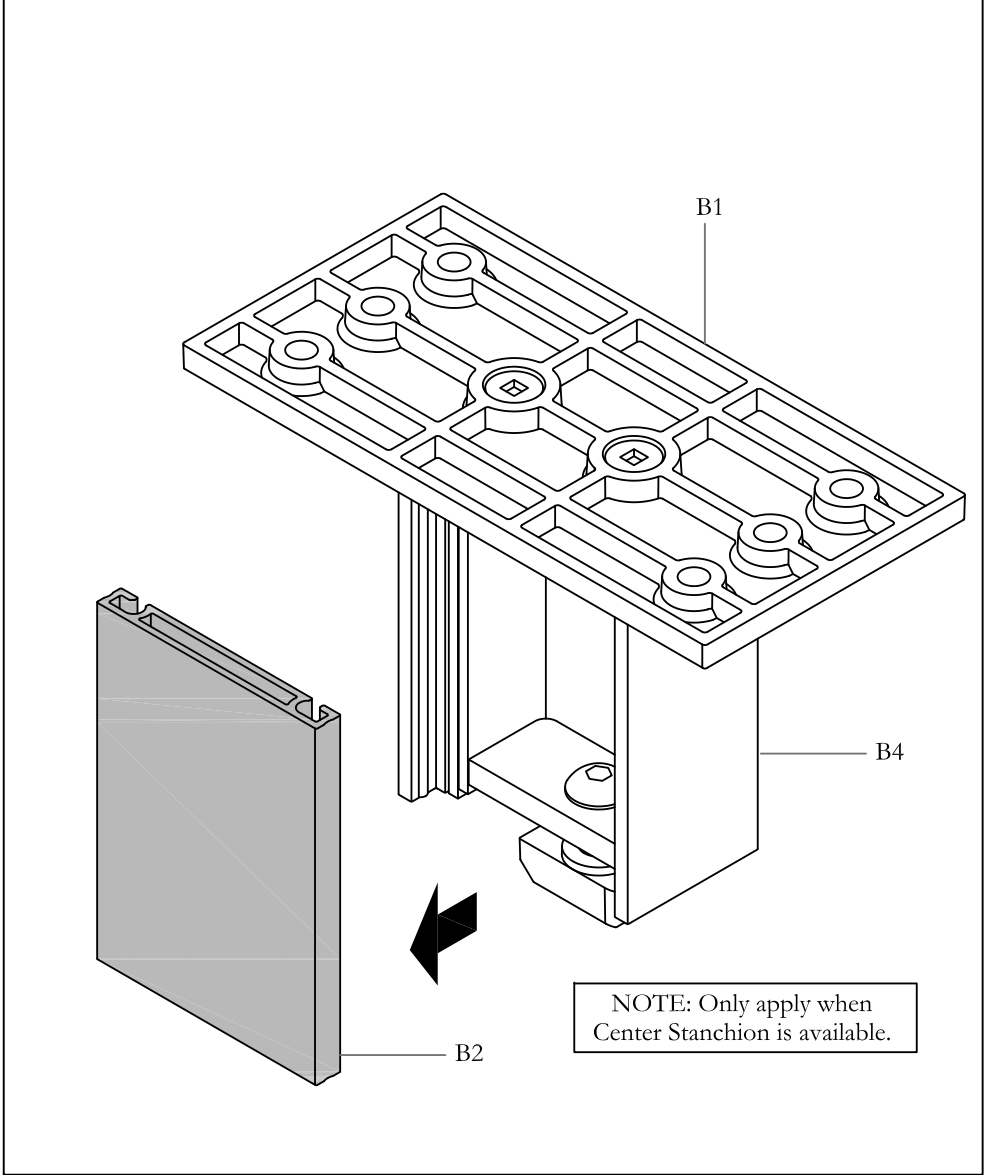
NOTE: Please refer to the above diagram to measure the location for Stanchions.

REMOVE END STANCHION COVER



STEP 1a: Remove End Stanchion Cover as shown.

REMOVE CENTER STANCHION COVER

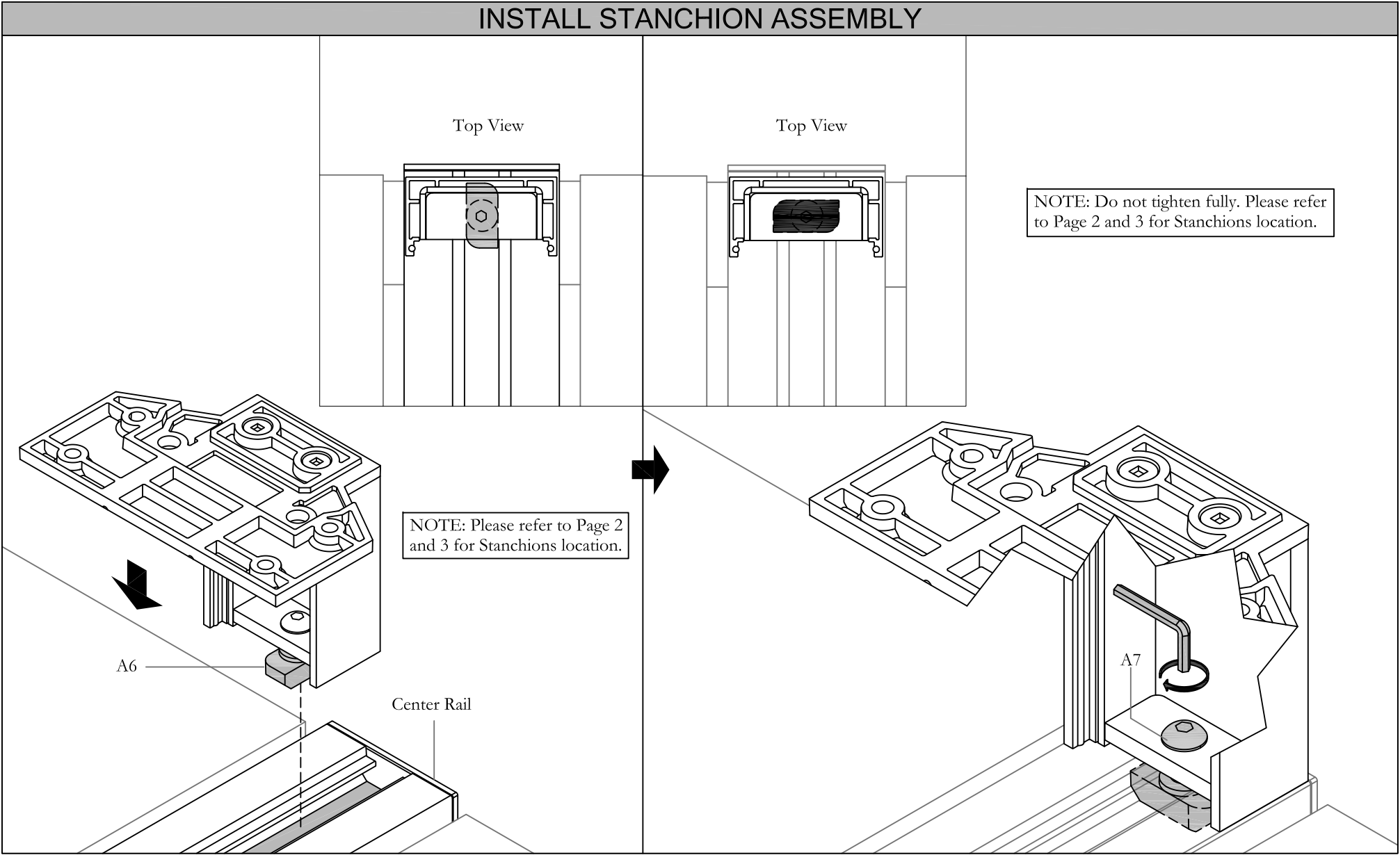


STEP 2: Remove Center Stanchion Cover as shown. (Optional)

Section: **STORAGE**

Description: **STANCHIONS, SPINE MOUNTED SHELF AND OVERHEADS (SINGLE MOUNT)**

Date: Feb 2017 Page No: 5 of 10
INT_101a

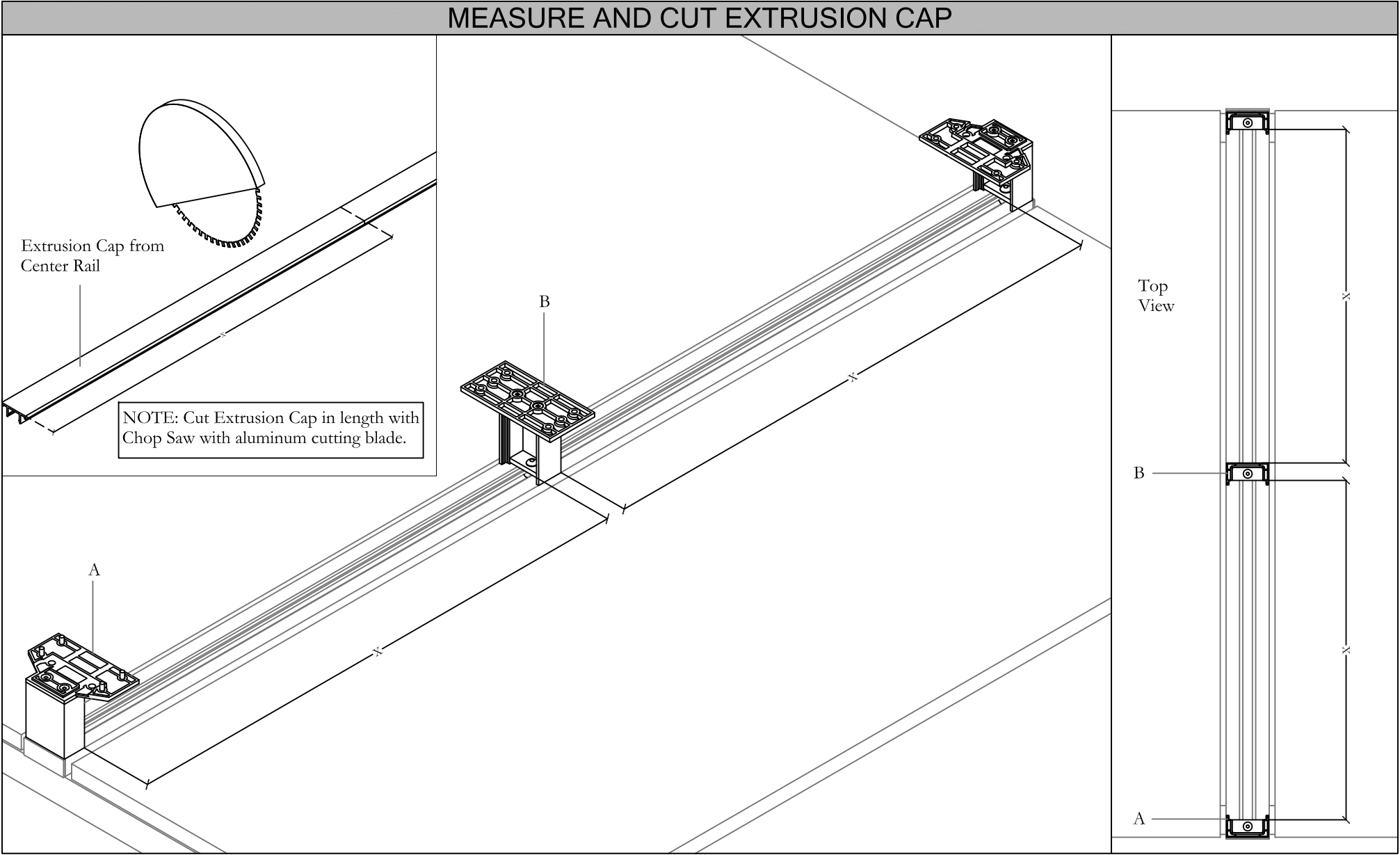


STEP 3: Insert Mounting Nut into Center Rail as shown, then rotate Screws loosely to keep Stanchions in position.

NOTE: Do not tighten fully. Please refer to Page 2 and 3 for Stanchions location.

Section: **STORAGE**

Description: **STANCHIONS, SPINE MOUNTED SHELF AND OVERHEADS (SINGLE MOUNT)**



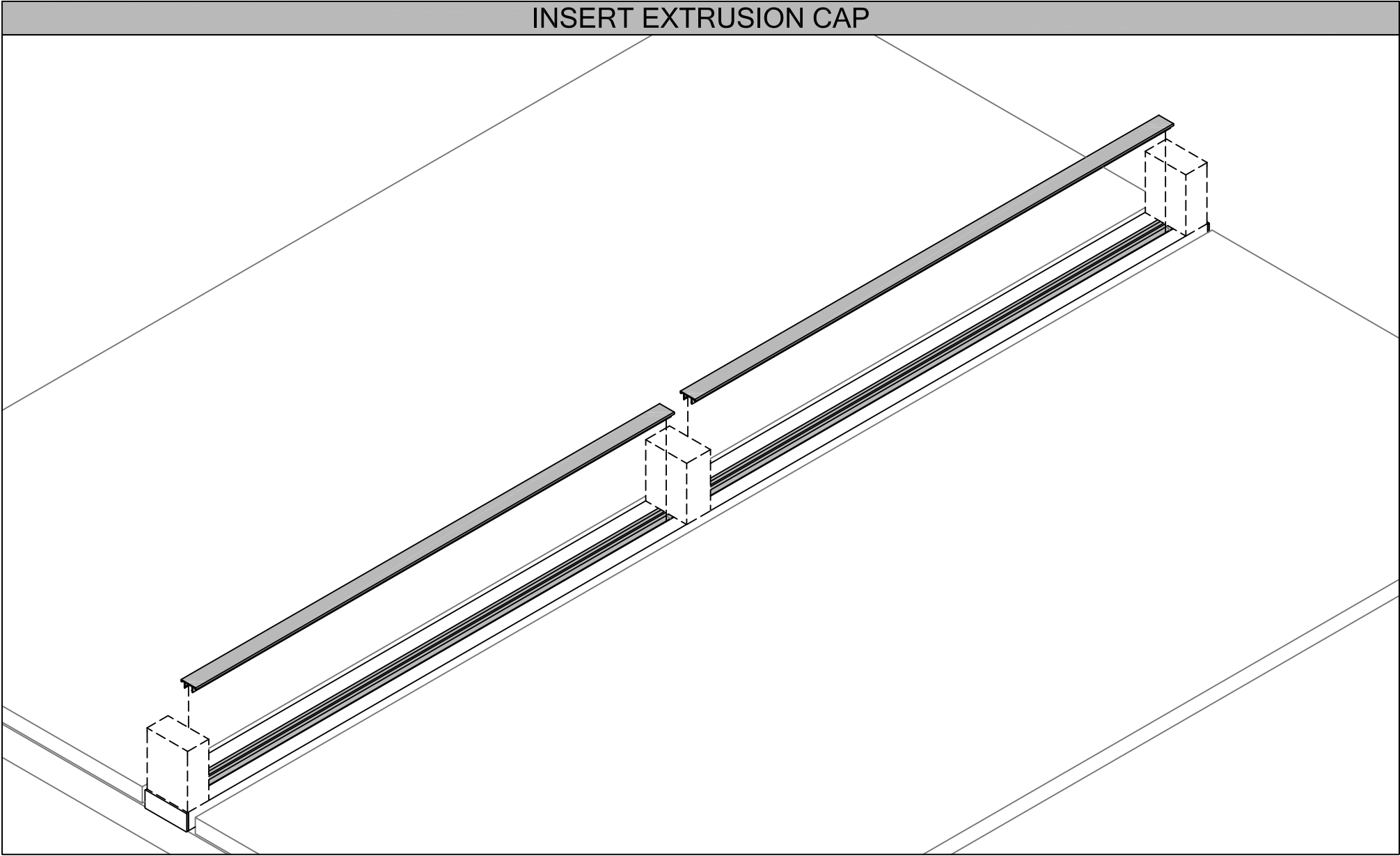
STEP 4: Measure the distance between Stanchions and cut Extrusion Cap in the measured length.

NOTE: Measure as shown in Top View. Cut Extrusion Cap in length with Chop Saw with aluminum cutting blade.

Section: **STORAGE**

Description: **STANCHIONS, SPINE MOUNTED SHELF AND OVERHEADS (SINGLE MOUNT)**

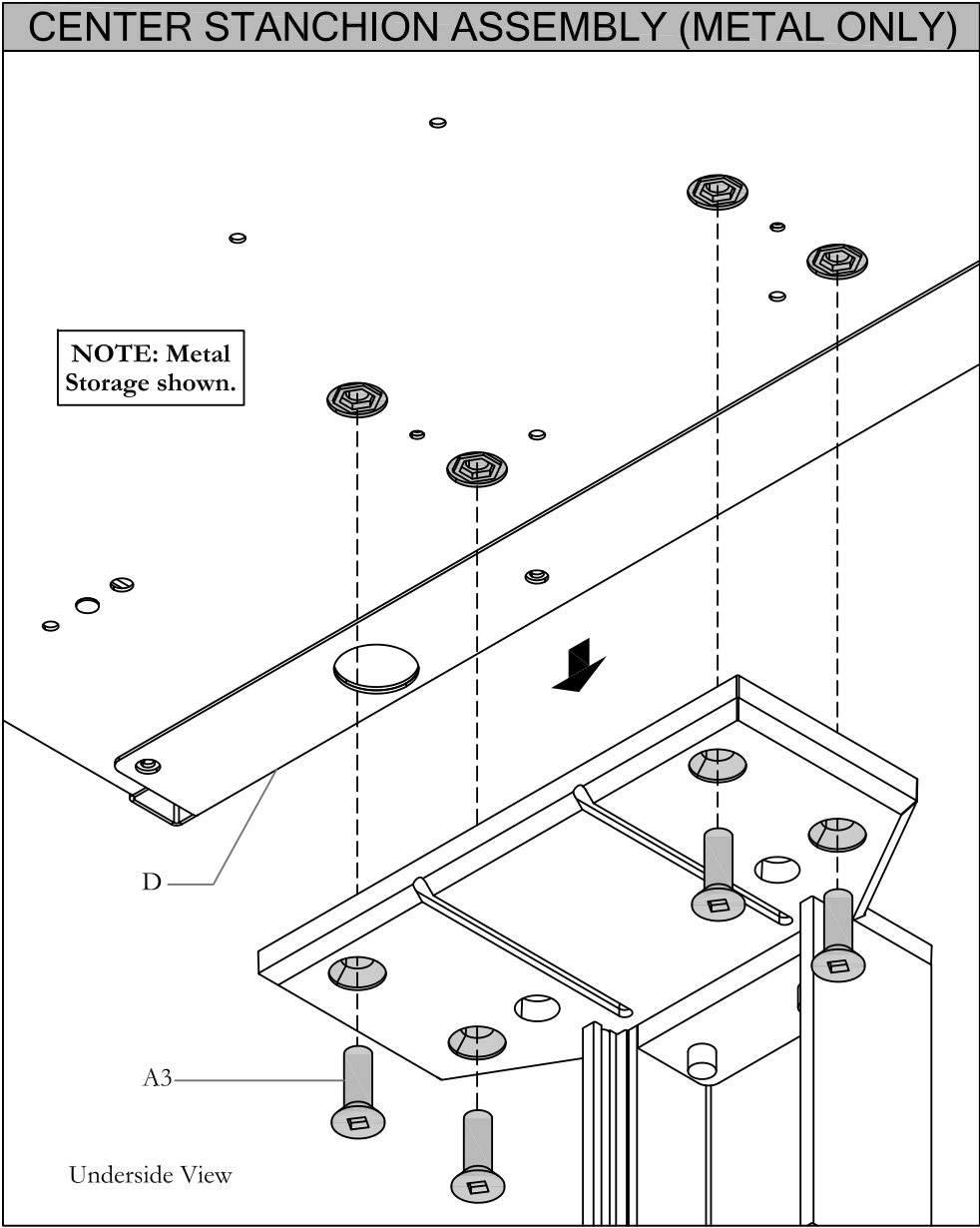
Date: Feb 2017 Page No: 7 of 10
INT_101a



STEP 5: Insert cut length Extrusion Cap into Center Rail as shown.

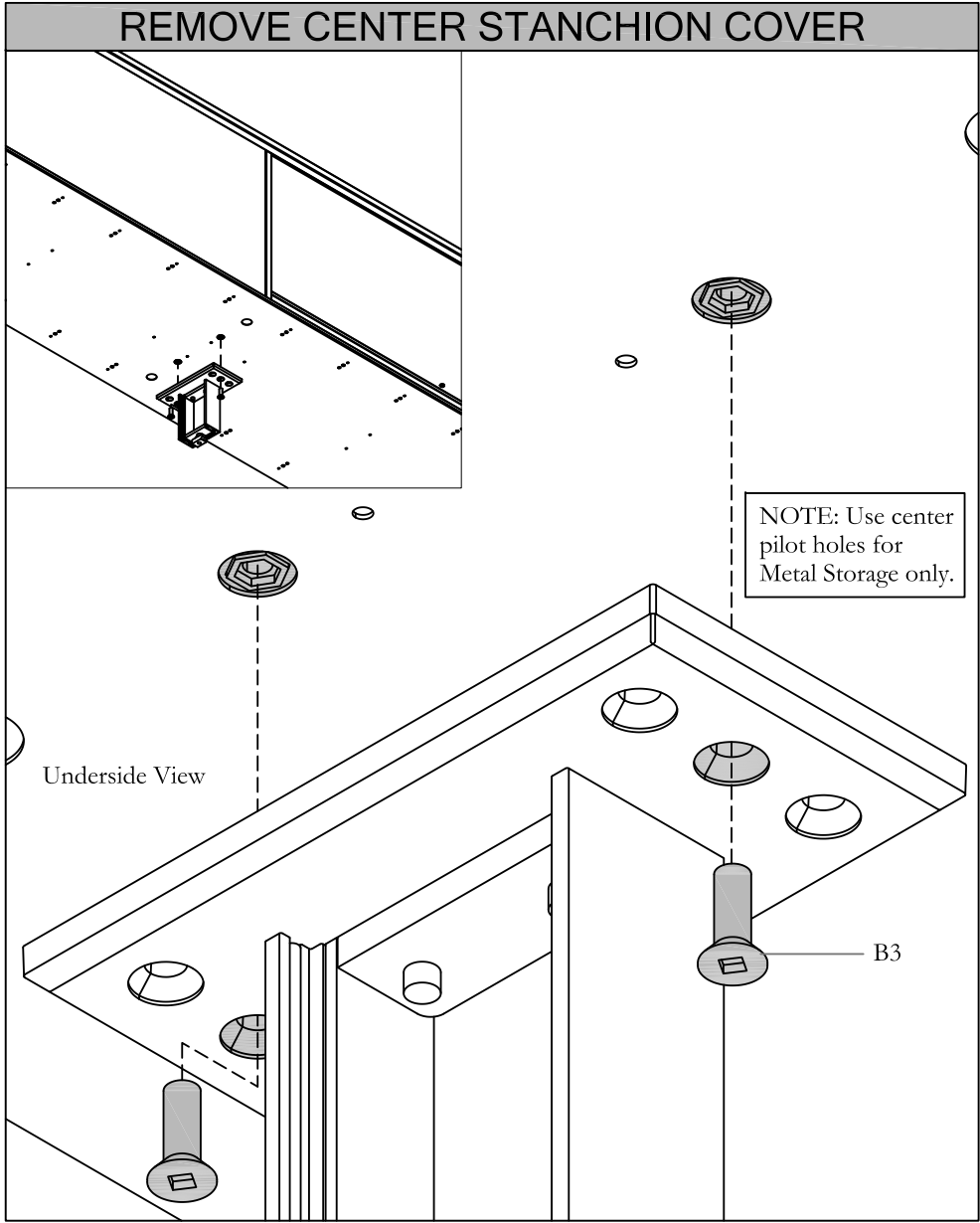
Section: **STORAGE**

Description: **STANCHIONS, SPINE MOUNTED SHELF AND OVERHEADS (SINGLE MOUNT)**



STEP 6: Fasten STORAGE to End Stanchion as shown.

NOTE: Loosen Mounting Nut and move Stanchion is pilot holes do not align.



STEP 7a: Fasten Metal STORAGE to Center Stanchion Plate using 2 center pilot holes.

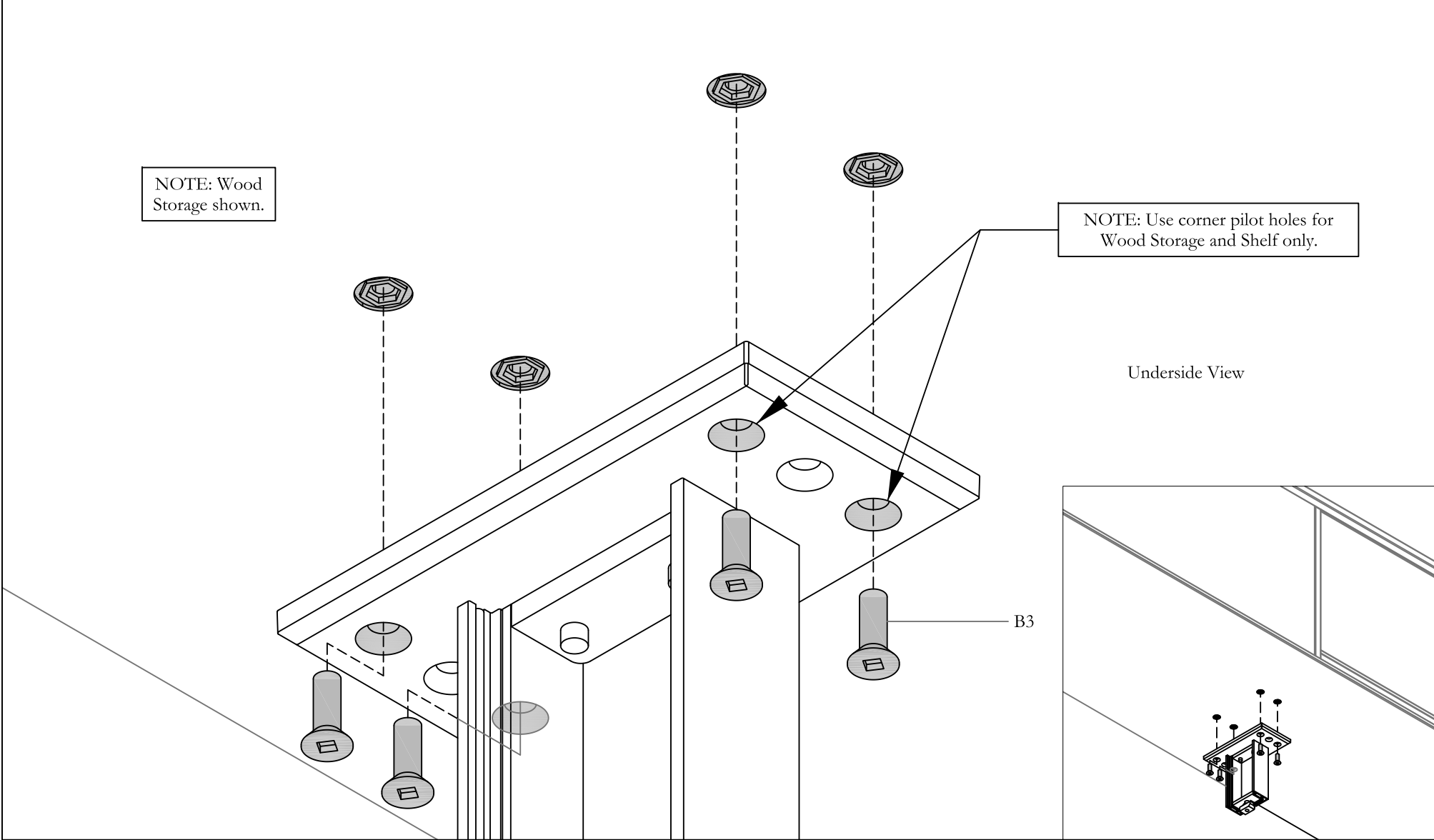
NOTE: Loosen Mounting Nut and move Stanchion is pilot holes do not align.

Section: **STORAGE**

Description: **STANCHIONS, SPINE MOUNTED SHELF AND OVERHEADS (SINGLE MOUNT)**

Date: Feb 2017 Page No: 9 of 10
INT_101a

CENTER STANCHION ASSEMBLY (WOOD STORAGE AND SHELF)



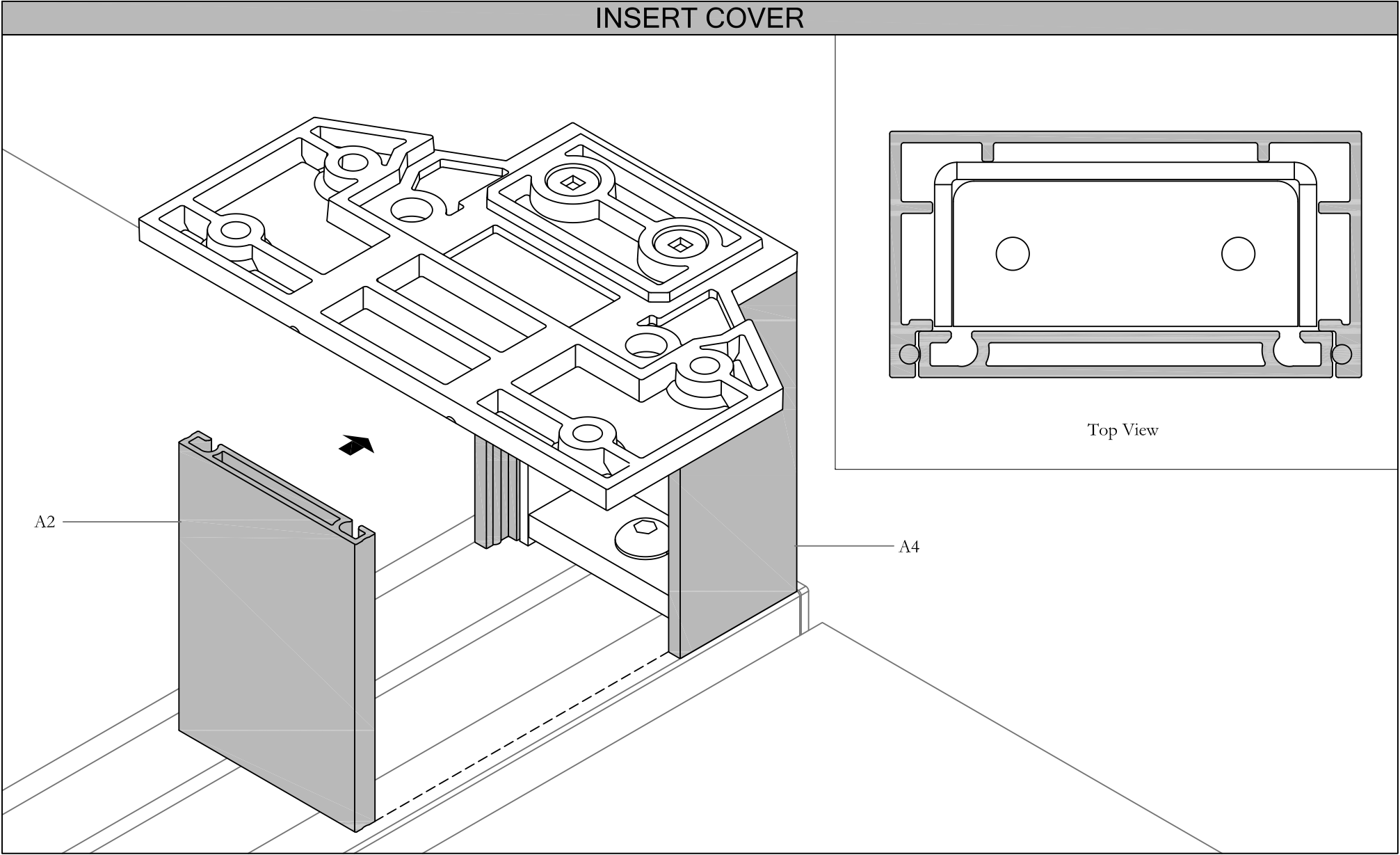
STEP 7b: Fasten Wood STORAGE to Center Stanchion Plate using 4 corner pilot holes.

NOTE: Loosen Mounting Nut and move Stanchion is pilot holes do not align.

Section: **STORAGE**

Description: **STANCHIONS, SPINE MOUNTED SHELF AND OVERHEADS (SINGLE MOUNT)**

Date: Feb 2017 Page No: 10 of 10
INT_101a



STEP 8: Insert Stanchion Cover into Stanchion Sleeve as shown.