

Name
Ephemera

Designer
Suzanne Tick

Style No.
4065

Use
Upholstery

Content
57% Polyester +
43% Acrylic

Abrasion
Wyzenbeek
100,000 double rubs

**Special
Characteristics**
Bleach Cleanable

Environmental
Heavy Metal Free
Oeko-Tex
100 Certified Yarn



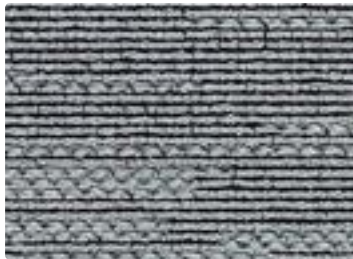
Penumbra 4065-12



Lucent 4065-01



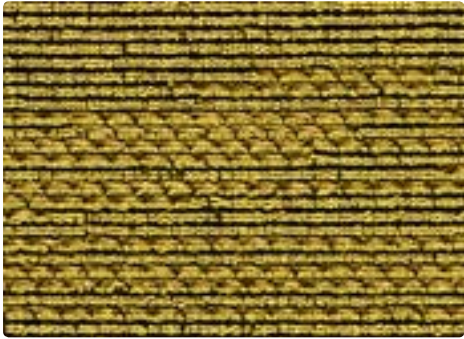
Afterglow 4065-02



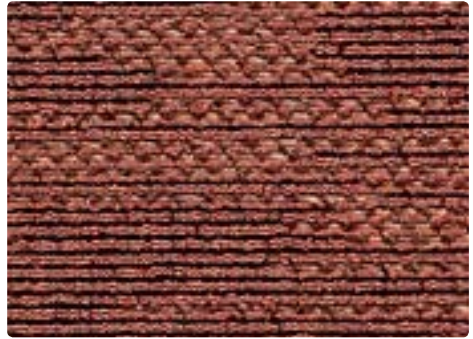
Ice Cloud 4065-03



Ashfall 4065-10



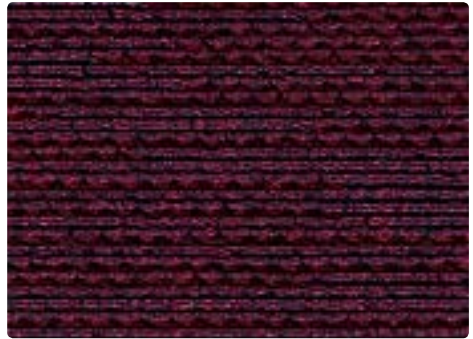
Phosphene 4065-05



Solar Flare 4065-06



Green Flash 4065-08



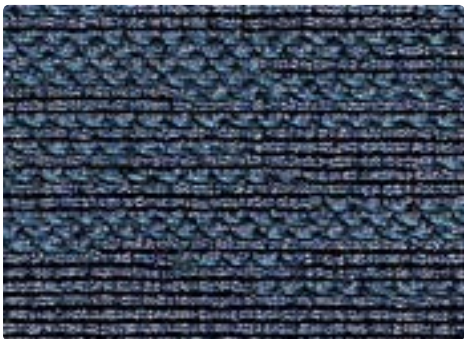
Gamma Burst 4065-07



Halcyon 4065-04



Penumbra 4065-12



Blue Shift 4065-09



Nightglow 4065-11



Ephemera by Luum

Sophistication isn't fixed—it's in flux. Ephemera features a highly durable epingle pile that reveals or obscures the subtle underlying ikat-inspired jacquard depending on the angle at which it is seen.

Age-old ikat techniques are reinterpreted through complex construction, each of the reflective and rich colors imparts a refined air to any space. In addition to its optical effect, this fabric was designed for bleach cleanability and washability, making it appropriate for merging hospitality and workplace applications.