

Name
Lustrado

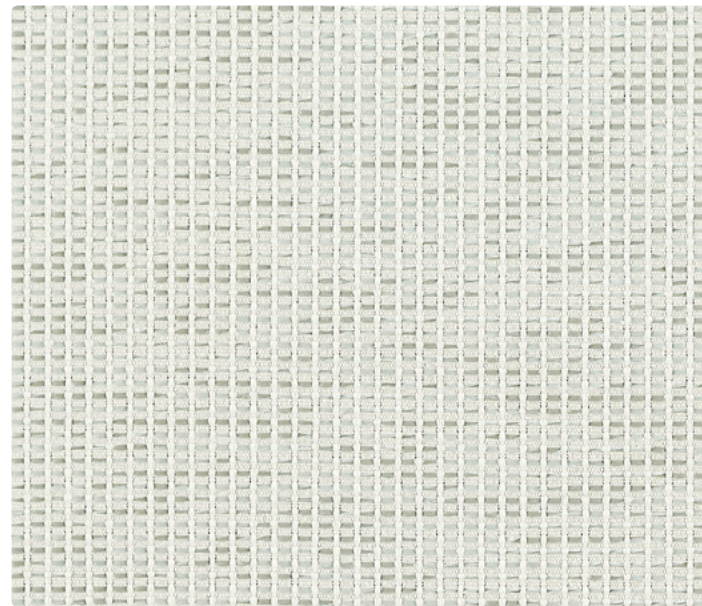
Designer
Suzanne Tick

Style No.
1020

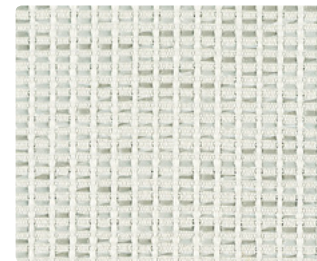
Use
Wrapped Wall
Panel

Content
75% Recycled Polyester +
25% Polypropylene

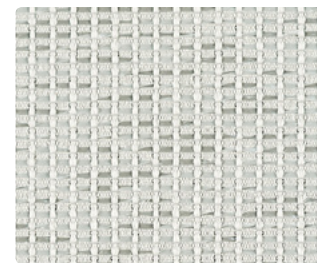
Environmental
Recycled Content



Glassine 1020-01



Glassine 1020-01



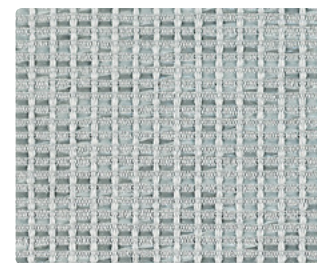
Acetate 1020-02



Brilliance 1020-03



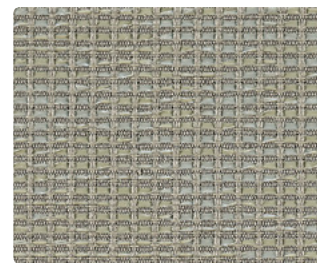
Alloy 1020-04



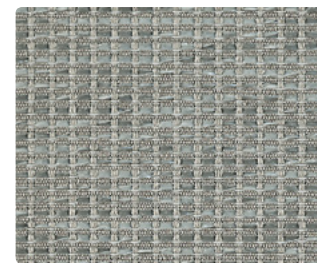
Gallium 1020-05



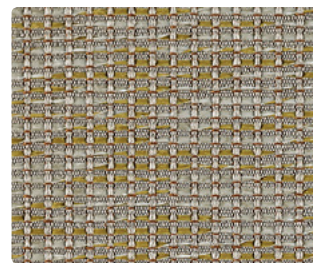
Incandescent 1020-06



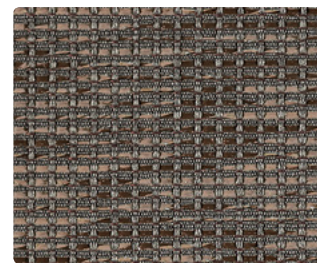
Resin 1020-07



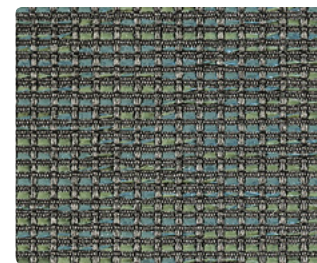
Sterling 1020-08



Gilt 1020-09



Varnish 1020-10



Vitreous 1020-11

Name **Lustrado**

Style No. **1020**

Designer
Suzanne Tick

Specification
Use: Wrapped Wall/Panel
Content: 75% Recycled Polyester (Preconsumer) + 25% Polypropylene
Weight: 12.6 ± 1.0 oz per linear yard
Width: 66"
Pattern Repeat: None
Directional: Yes

Finish
Polyester Immersion Backing

Performance
Breaking Strength: ASTM D5034 Warp 210 lbf, Fill 86 lbf
Colorfastness to Light: AATCC 16, Grade 5 at 40 Hours
Colorfastness to Crocking: AATCC 8, Wet Class 5, Dry Class 5

Flame Retardancy
ASTM E84 Unadhered Class A or 1

Maintenance
WS, Clean with either a water-based or solvent-based cleaning agent.

Environmental
Recycled Content

Origin
USA



Dye lots may vary slightly from samples shown. Samples shown off the bolt.

Canada
877.705.LUUM
luumtextiles.ca

USA
877.705.LUUM
luumtextiles.com

International
919.464.2922
luumtextiles.com

cdn/us/int/05-16

© Teknion 2016.
*,™ Trademarks of Teknion Corporation and/or its subsidiaries or licensed to it.
*Certification Marks owned by the Association for Contract Textiles, Inc.

A2-P1 — SC-305-1020