

Name

Linen Weave

Style No.

1018

Use

Wrapped Wall
Panel

Content

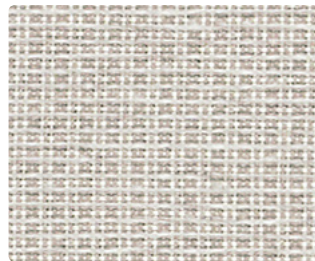
100% Recycled Polyester

Environmental

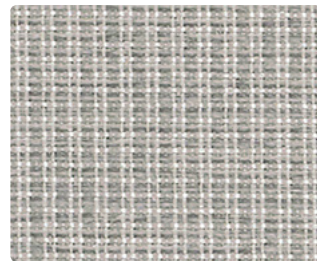
Chemical Finish Free
Recycled Content



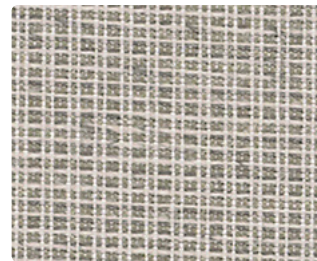
Coir 1018-01



Bast 1018-02



Dusty Grey 1018-03



Mineral 1018-04



Linseed 1018-05



Gate 1018-06



Sesame 1018-07

Name

Linen Weave

Style No.

1018

Specification

Use: Wrapped Wall/Panel
 Content: 100% Recycled Polyester (73% Preconsumer, 27% Postconsumer)
 Weight: 11.3 ± 1.0 oz per linear yard
 Width: 66”
 Pattern Repeat: None
 Directional: Yes

Finish

None

Performance

Breaking Strength: ASTM D5034 Warp 228 lbf, Fill 213 lbf
 Colorfastness to Light: AATCC 16, Grade 4 at 40 Hours
 Colorfastness to Crocking: AATCC 8, Wet Class 3, Dry Class 4

Flame Retardancy

ASTM E84 Unadhered Class A or 1

Maintenance

WS, Clean with either a water-based or solvent-based cleaning agent.

Environmental

Chemical Finish Free
 Facts 3rd-party certified to NSF/ANSI 336 Silver
 Recycled Content

Origin

Canada

Dye lots may vary slightly from samples shown. Samples shown off the bolt.



Canada
 877.705.LUUM
luumtextiles.ca

USA
 877.705.LUUM
luumtextiles.com

International
 919.464.2922
luumtextiles.com

cdn/us/int/05-16

© Teknion 2016.

*,™ Trademarks of Teknion Corporation and/or its subsidiaries or licensed to it.

*Certification Marks owned by the Association for Contract Textiles, Inc.

P1 — SC-305-1018