

Name
Linen Weave

Style No.
1018

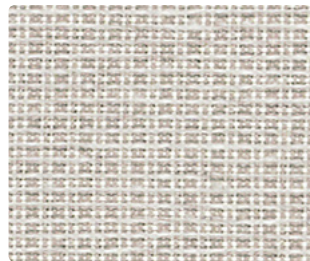
Use
Wrapped Wall
Panel

Content
100% Recycled Polyester

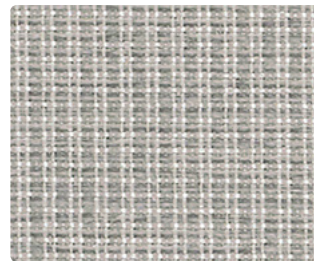
Environmental
Chemical Finish Free
Recycled Content



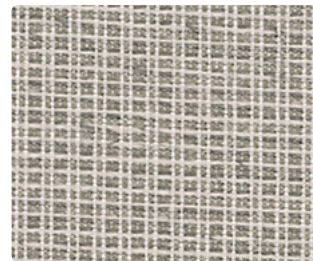
Coir 1018-01



Bast 1018-02



Dusty Grey 1018-03



Mineral 1018-04



Linseed 1018-05



Gate 1018-06



Sesame 1018-07

Name **Linen Weave**

Style No. **1018**

Specification
Use: Wrapped Wall/Panel
Content: 100% Recycled Polyester (73% Preconsumer, 27% Postconsumer)
Weight: 11.3 ± 1.0 oz per linear yard
Width: 66"
Pattern Repeat: None
Directional: Yes

Finish
None

Performance
Breaking Strength: ASTM D5034 Warp 228 lbf, Fill 213 lbf
Colorfastness to Light: AATCC 16, Grade 4 at 40 Hours
Colorfastness to Crocking: AATCC 8, Wet Class 3, Dry Class 4

Flame Retardancy
ASTM E84 Unadhered Class A or 1

Maintenance
WS, Clean with either a water-based or solvent-based cleaning agent.

Environmental
Chemical Finish Free
Facts 3rd-party certified to NSF/ANSI 336 Silver
Recycled Content

Origin
USA

Dye lots may vary slightly from samples shown. Samples shown off the bolt.



Canada
877.705.LUUM
luumtextiles.ca

USA
877.705.LUUM
luumtextiles.com

International
919.464.2922
luumtextiles.com

cdn/us/int/05-16

© Teknion 2016.

*.™ Trademarks of Teknion Corporation and/or its subsidiaries or licensed to it.

*Certification Marks owned by the Association for Contract Textiles, Inc.

P1 — SC-305-1018