

**Name**  
Two Tone

**Designer**  
Suzanne Tick

**Style No.**  
4016

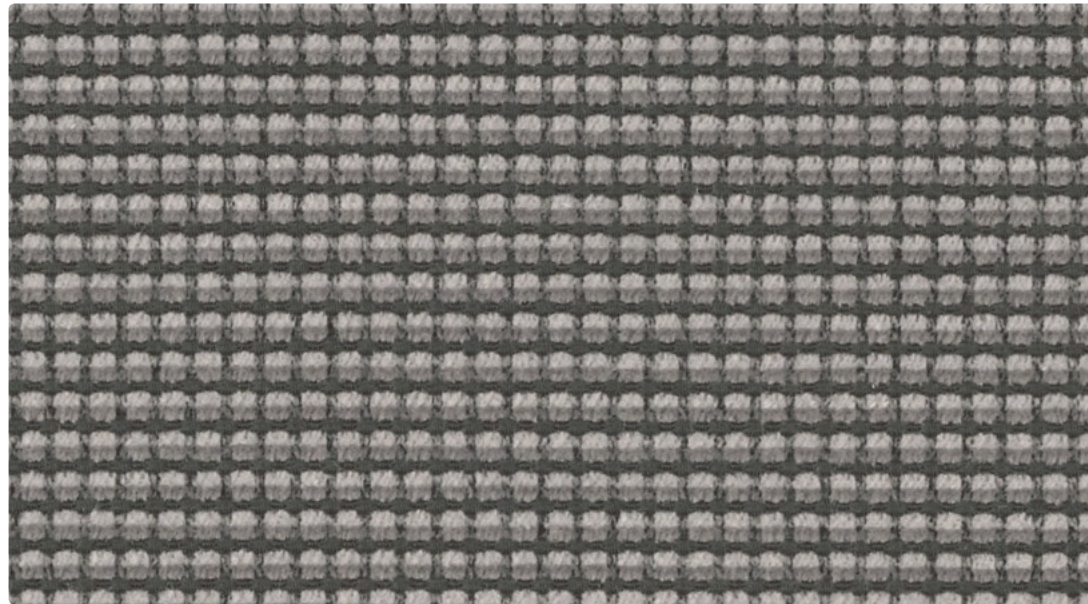
**Use**  
Upholstery

**Content**  
72% Polyester +  
28% Nylon

**Abrasion**  
Wyzenbeek  
100,000 double rubs

**Special Characteristics**  
Bleach Cleanable

**Environmental**  
PFOA/PFOS Free  
Stain Repellent



Rock Steady 4016-01



Ghost Town 4016-02



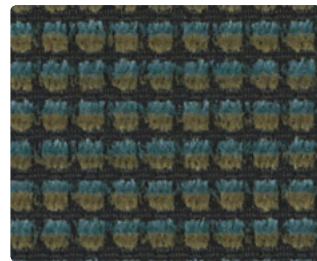
New Wave 4016-03



Dance Craze 4016-04



Mod Suit 4016-05



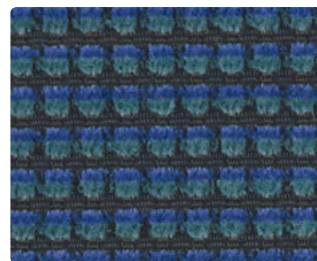
Hit Record 4016-06



English Rose 4016-07



Black Vinyl 4016-08



Blue Suede 4016-09



The Beat 4016-10

**Name** **Two Tone**

**Style No.** **4016**

**Designer** Suzanne Tick

**Specification**  
**Use:** Upholstery  
**Content:** 72% Polyester + 28% Nylon  
**Weight:** 12.24 oz per linear yard  
**Width:** 54"  
**Pattern Repeat:** Horizontal 0.19" Vertical 0.19"  
**Directional:** Yes

**Finish**  
 Acrylic Backing  
 Stain Repellent

**Performance**  
**Abrasion:** ASTM D4157 Wyzenbeek 100,000 double rubs  
**Breaking Strength:** ASTM D5034 Warp 251.8 lbf, Fill 319.5 lbf  
**Seam Slippage:** ASTM D4034 Warp 84.4 lbf, Fill 66 lbf  
**Colorfastness to Light:** AATCC 16, Grade 4.5 at 40 Hours  
**Colorfastness to Crocking:** AATCC 8, Wet Class 5, Dry Class 5  
**Pilling:** ASTM D3511 (Brush Pill), Class 5

**Flame Retardancy** Cal TB 117-2013

**Maintenance** WS, Clean with either a water-based or solvent-based cleaning agent.  
 Bleach Cleanable: 20% (4:1 Ratio), wipe with water after solution.

**Environmental** PFOA/PFOS Free Stain Repellent

**Origin** USA

Dye lots may vary slightly from samples shown. Samples shown off the bolt.



**Canada**  
 877.705.LUUM  
[luumtextiles.ca](http://luumtextiles.ca)

**USA**  
 877.705.LUUM  
[luumtextiles.com](http://luumtextiles.com)

**International**  
 919.464.2922  
[luumtextiles.com](http://luumtextiles.com)

cdn/us/int/05-16

© Teknion 2016.  
 \*,™ Trademarks of Teknion Corporation and/or its subsidiaries or licensed to it.  
 \*Certification Marks owned by the Association for Contract Textiles, Inc.

U7 — SC-305-4016