

Name
Beeline

Style No.
1015

Use
Wrapped Wall
Panel

Content
100% Recycled Polyester

Environmental
Chemical Finish Free
Heavy Metal Free Dyes
Recycled Content



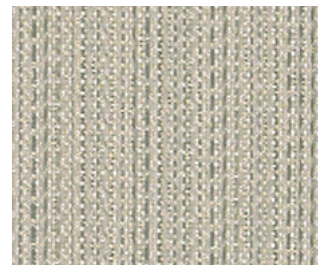
Plumb 1015-02



Strand 1015-03



Thread 1015-04



String 1015-05

Name  **Beeline**

Style No.  **1015**

Specification
Use: Wrapped Wall/Panel
Content: 100% Recycled Polyester (65% Preconsumer, 35% Postconsumer)
Weight: 10.2 oz per linear yard
Width: 67.5"
Pattern Repeat: Horizontal 4.12" Vertical 0" Random Match
Directional: Yes

Finish Acrylic Backing

Performance
Breaking Strength: ASTM D5034 Warp 263 lbf, Fill 146 lbf
Colorfastness to Light: AATCC 16, Grade 4 at 40 Hours
Colorfastness to Crocking: AATCC 8, Wet Class 3, Dry Class 4

Flame Retardancy ASTM E84 Unadhered Class A or 1

Maintenance W, Clean with a water-based cleaning agent. Do not use solvent products.

Environmental
 Chemical Finish Free
 Facts 3rd-party certified to NSF/ANSI 336 Gold
 Heavy Metal Free Dyes
 Recycled Content

Origin USA

Dye lots may vary slightly from samples shown. Samples shown off the bolt.



Canada
877.705.LUUM
luumtextiles.ca

USA
877.705.LUUM
luumtextiles.com

International
919.464.2922
luumtextiles.com

cdn/us/int/05-16

© Teknion 2016.
 *,™ Trademarks of Teknion Corporation and/or its subsidiaries or licensed to it.
 *Certification Marks owned by the Association for Contract Textiles, Inc.

PA — SC-305-1015