

Name
Beeline

Style No.
1015

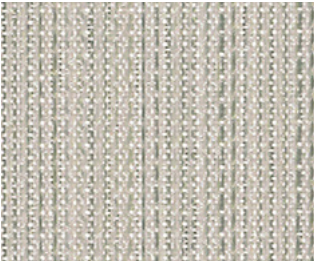
Use
Wrapped Wall
Panel

Content
100% Recycled Polyester

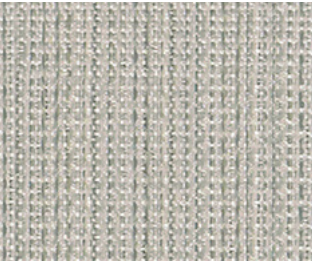
Environmental
Chemical Finish Free
Heavy Metal Free Dyes
Recycled Content



Band 1015-01



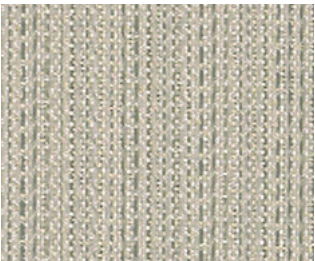
Plumb 1015-02



Strand 1015-03



Thread 1015-04



String 1015-05



Dash 1015-06



Band 1015-01

Name **Beeline**

Style No. **1015**

Specification

Use: Wrapped Wall/Panel
Content: 100% Recycled Polyester (65% Preconsumer, 35% Postconsumer)
Weight: 10.2 oz per linear yard
Width: 67.5”
Pattern Repeat: Horizontal 4.12” Vertical 0” Random Match
Directional: Yes

Finish Acrylic Backing

Performance

Breaking Strength: ASTM D5034 Warp 263 lbf, Fill 146 lbf
Colorfastness to Light: AATCC 16, Grade 4 at 40 Hours
Colorfastness to Crocking: AATCC 8, Wet Class 3, Dry Class 4

Flame Retardancy ASTM E84 Unadhered Class A or 1

Maintenance W, Clean with a water-based cleaning agent. Do not use solvent products.

Environmental

Chemical Finish Free
Facts 3rd-party certified to NSF/ANSI 336 Gold
Heavy Metal Free Dyes
Recycled Content

Origin USA

Dye lots may vary slightly from samples shown. Samples shown off the bolt.



Canada
877.705.LUUM
luumtextiles.ca

USA
877.705.LUUM
luumtextiles.com

International
919.464.2922
luumtextiles.com

cdn/us/int/05-16

© Teknion 2016.
*,™ Trademarks of Teknion Corporation and/or its subsidiaries or licensed to it.
*Certification Marks owned by the Association for Contract Textiles, Inc.