

altos & optos low profile
user guide for revit Families

2020-07-27 v 3.0





table of contents

revit content overview	1
altos architectural wall creation.....	2
<i>Working with Types</i>	3
<i>Working with Construction Parameters</i>	4
<i>Working with Tek Pier Parameters</i>	5
optos low profile architectural wall creation.....	7
<i>Special Conditions</i>	9
<i>Filler Panels</i>	11
<i>Optos Electrical Side Panel</i>	12
<i>Framed Back painted Glass Whiteboard Double Span</i>	13
setting constraints - levels	14
connections	15
doors-general guidelines	19
adding architectural complements components	21
electrical fixtures.....	24
2d detail components.....	25
revit schedules	26
material libraries	29
family & curtain panel type index for altos walls.....	30

revit content overview

Teknion's complete package of Revit families provides:

- Wall System families
- Curtain Wall Panels
- Tek Pier
- Connectors
- Doors
- 2D Detail Components
- Basic Schedules
- Material Library

NOTE: To create your Teknion layout in Revit, please refer to the Altos and Optos Application Guides. These highlight information to help you plan your project correctly.

The Application Guides can be downloaded from here:

[Altos Full Application Guide](#)

[Optos Full Application Guide](#)

altos architectural wall creation

62 Families
486 Types
Construction Parameters

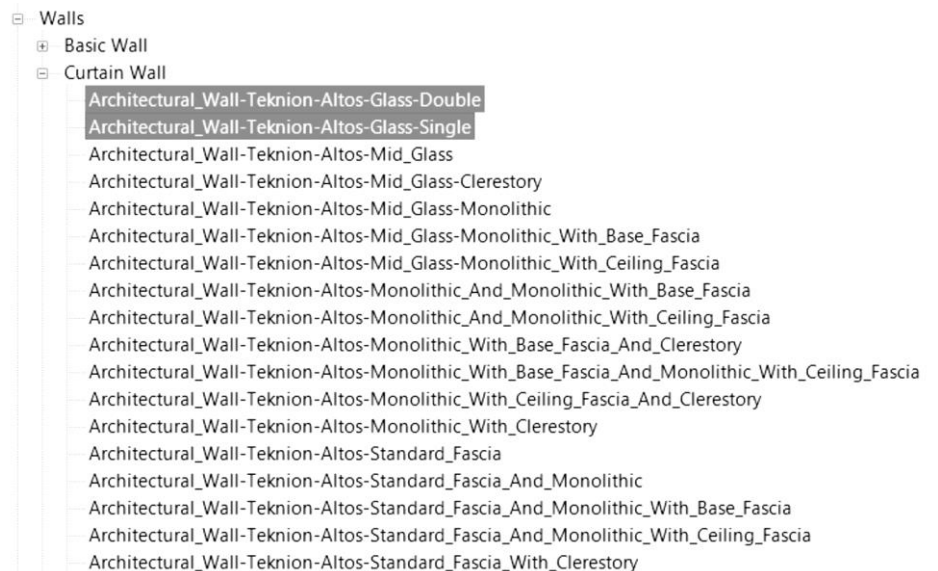
Tekunion walls have been created under the Curtain Wall Revit category. At the family level, Curtain Panels (panel modules with fascias) have been created. These panels can be selected to model the desired interior partitions.

For further information about Revit Curtain Wall Systems, please refer to Autodesk Knowledge Network:

<http://knowledge.autodesk.com/support/revit-products/learnexplore/caas/CloudHelp/cloudhelp/2016/ENU/Revit-Model/files/GUIDBBC16AF1-88C1-4B2E-A23A-917C3F427E97-htm.html>

Altos wall Revit Families have been created based on their possible structure configurations. Walls can be configured at 3 different levels of detail. The first level is at the Revit family level. Altos Wall Revit Families have pre-configured construction wall models that range in configuration from monolithic to working wall segmentations and a range of ceiling/base fascia configurations. These will serve as a base for your design.

For instance, selecting either a Single or Double glass Altos family will create a wall panel pre-configured to have a single or double glass structure in your project:



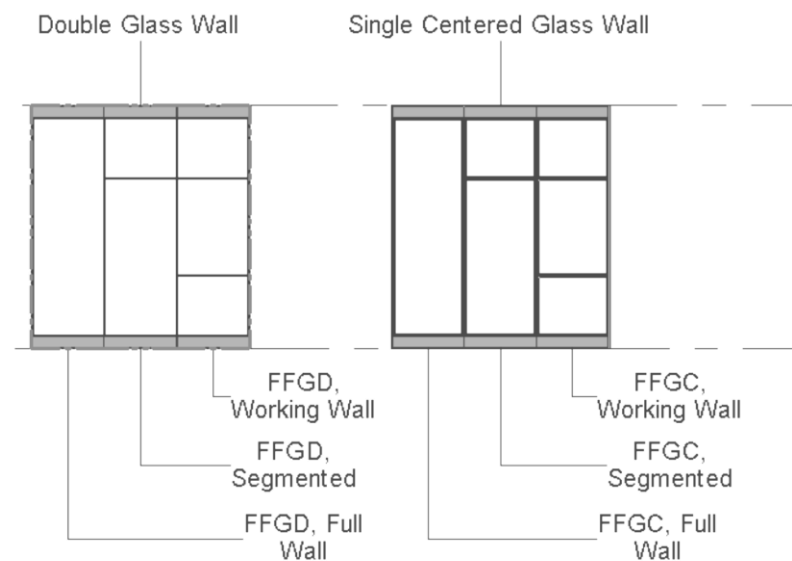
altos architectural wall creation

Working with Types

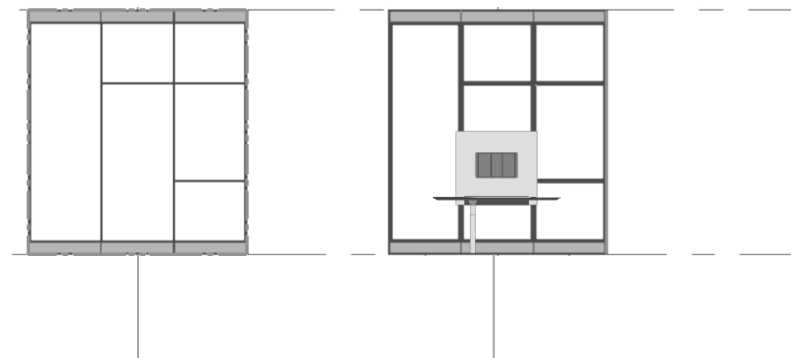
After selecting a Revit wall Family, the general structure for the wall is determined.

We can now customize the segments of our wall to accommodate our design needs. We do this by going to a second level of configuration and changing our Curtain Panel types (Revit's name for a sub-configuration) of the segments on our wall. Types allow for fully customizing individual wall segments and their side A and side B of our walls.

For example, both the double and single glass Altos wall Revit families have sub-types for a full, segmented and working wall configuration that allow us to configure our wall segments:



Similarly, wall segments can be customized by replacing their Curtain Panel type to one of the pre-configured Tek Pier Revit Curtain Panel types:

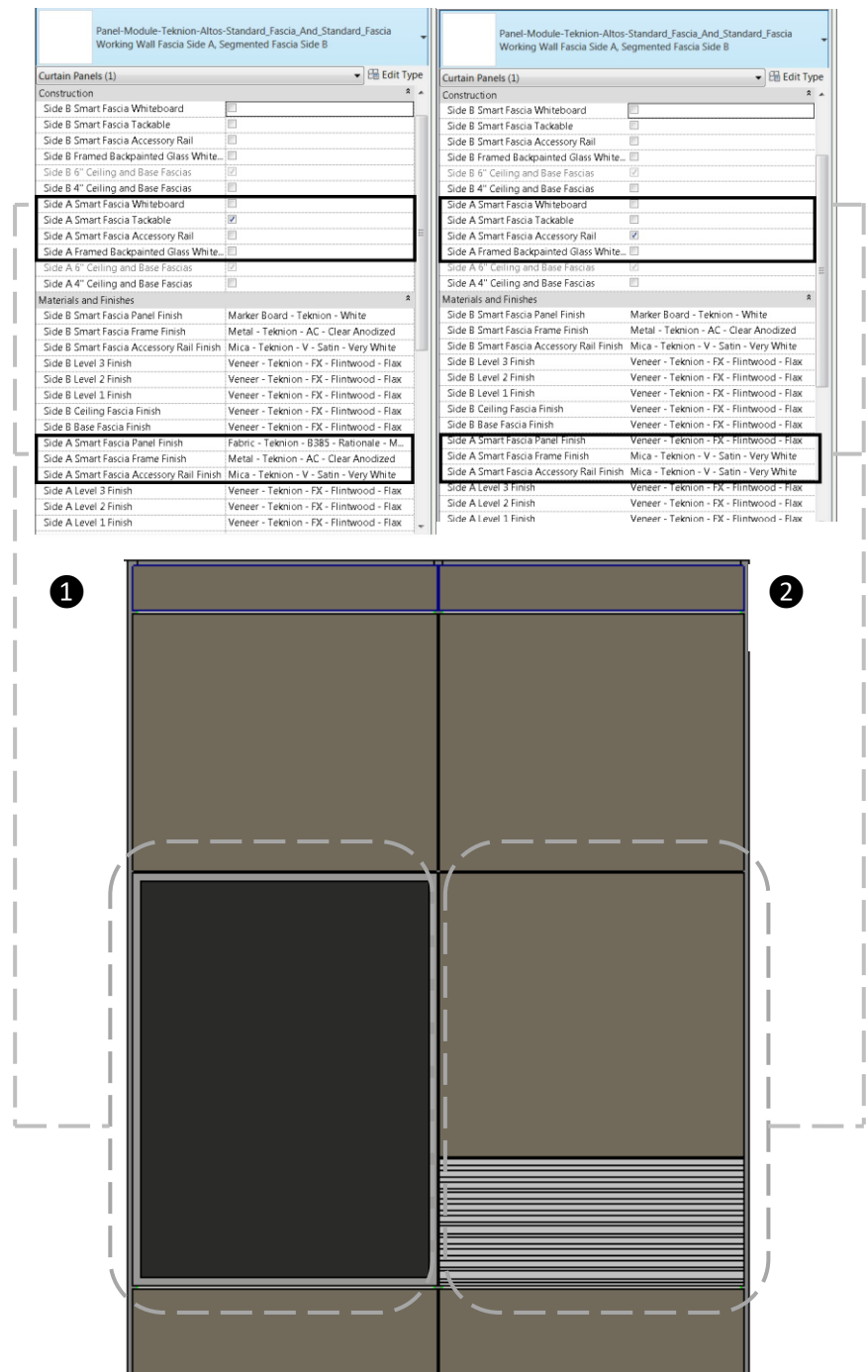


altos architectural wall creation

Working with Construction Parameters

Curtain Panels have many instance options that enable the user to customize finishes or configurations. Please note that some options apply when the right panel is active. For instance: when having a Working Wall configuration, Smart Fascias options can be set

Please refer to our application guides for more information on product limitations/restrictions regarding panel finishes.

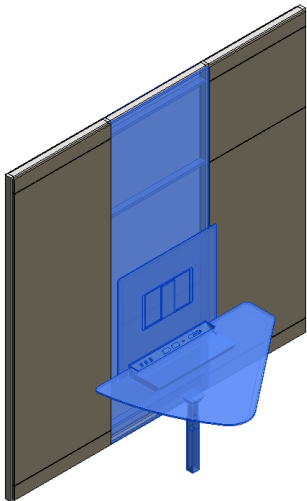


altos
architectural
wall creation

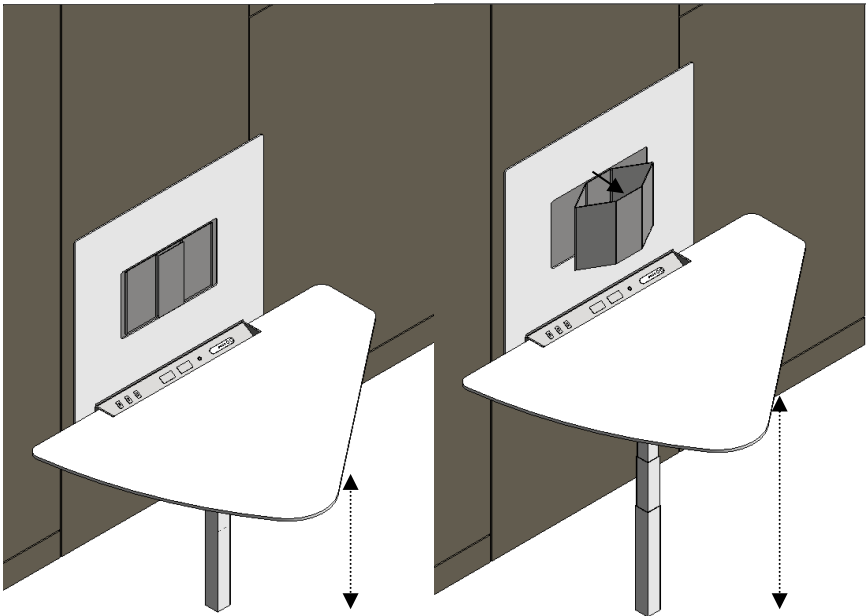
Working with Tek Pier
Parameters

Tek Pier panels have been created with many instance parameters that allow for easy product customization.

Available parameters allow the user to customize the orientation (including electrical components), height and finishes for the Tek Pier unit. The monitor support also extends to allow for more dynamic renderings.



Constraints	
Side B Level 1 Height	2' 6 11/64"
Side B Ceiling and Base Geom...	0' 5 51/256"
Construction	
TekPier Worksurface Right Ori...	<input checked="" type="checkbox"/>
TekPier Worksurface Left Ori...	<input type="checkbox"/>
Side B Smart Fascia Whiteboard	<input type="checkbox"/>
Side B Smart Fascia Tackable	<input type="checkbox"/>
Side B Smart Fascia Accessory...	<input type="checkbox"/>
Side B Framed Backpainted GL...	<input type="checkbox"/>
Materials and Finishes	
TekPier Worksurface Undersid...	Paint - Teknion - 83 - Very ...
TekPier Worksurface Top Finish	Paint - Teknion - 83 - Very ...
Side B Smart Fascia Panel Finish	Marker Board - Teknion - White
Side B Smart Fascia Frame Finish	Metal - Teknion - AC - Clear ...
Side B Smart Fascia Accessory...	Mica - Teknion - V - Satin - V...
Side B Level 3 Finish	Veneer - Teknion - FX - Flint...
Side B Level 2 Finish	Veneer - Teknion - FX - Flint...
Side B Level 1 Finish	Veneer - Teknion - FX - Flint...
Side A Level 2 Finish	Veneer - Teknion - FX - Flint...
Side A Level 1 Finish	Veneer - Teknion - FX - Flint...
Dimensions	
TekPier Worksurface Height N...	Height ranges between 24 i...
TekPier Worksurface Height	2' 5"
Side B Variable Panel Height	2' 5 59/64"
Fascia Offset Border 2	0' 0 109/256"
Fascia Offset Border 1	0' 0 109/256"
Area	34.01 SF
Width	3' 4 115/128"
Height	9' 11 3/4"
Identity Data	
Comments	
Mark	
Phasing	
Phase Created	New Construction
Phase Demolished	None
Visibility	
Monitor Extended	<input type="checkbox"/>

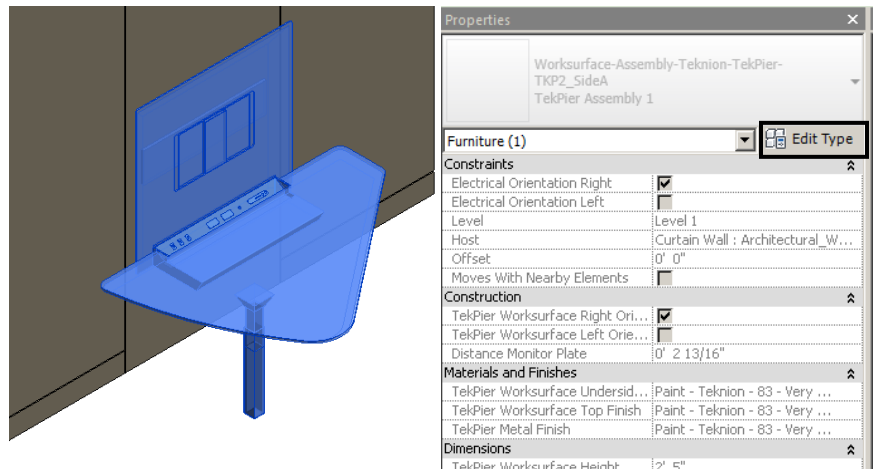


altos architectural wall creation

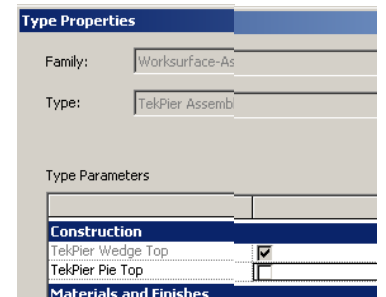
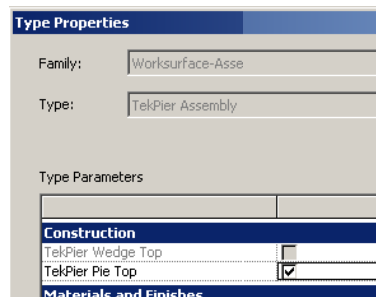
Working with Tek Pier Parameters

To set a workspace top style,
Please follow the next steps:

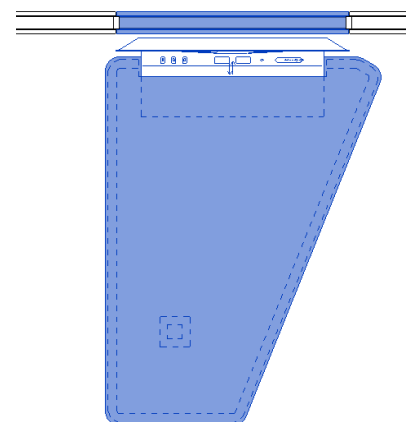
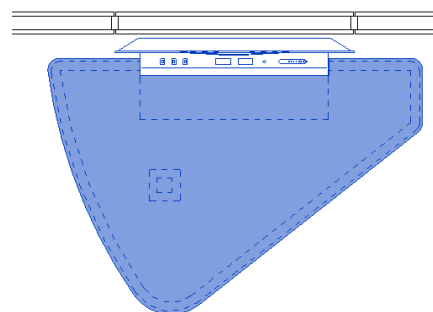
1. Select only the Tek Pier Revit
component and click “Edit Type”
on the properties window.



2. Check the desired workspace
style option box.



3. Click on “Apply” to implement
the changes



optos low profile architectural wall creation

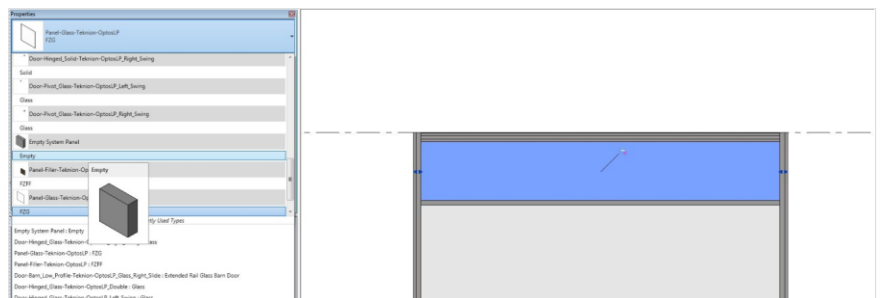
To set the double top mullion,
Please follow the next steps:

1. Select the Optos curtain wall and
add a new horizontal gridline.
By default it will create a new mullion.

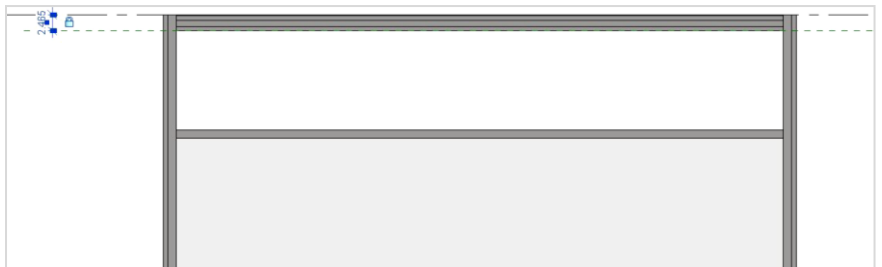


2. Select the upper panel and Click
the pin icon to unpin it.

3. In the Type Selector, select the
Empty System Panel family in order
to replace the glass panel with an
empty panel.



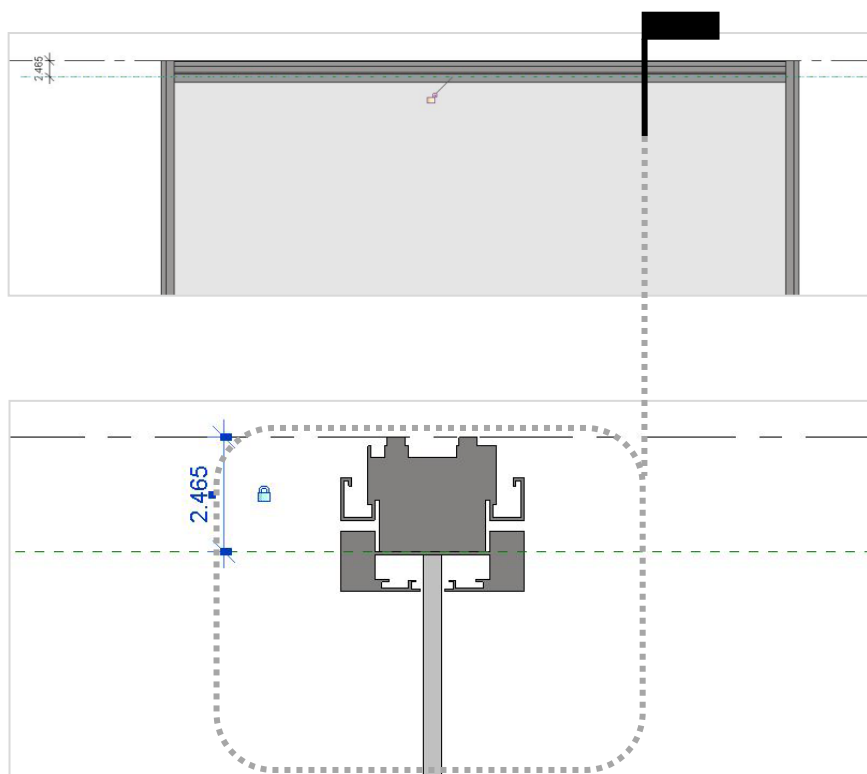
4. Create a new Reference Plane at
2.465" from the top of the Curtain
Wall. Lock the reference plane.



The Optos Revit wall family has been provided as one family with a Ceiling top spacer + Frame beam and a base rail channel. The top and base constraints for the wall family are set by the user following the product's application guide. In order to do that, it is recommended to previously create both levels so they can be used as constrains.

A horizontal ceiling frame trim is needed to complete the Optos profile at the top. Adding this piece as a separate entity to our walls allows us to create segmentations independent from the Ceiling top spacer + Frame beam components which remain a single entity.

5. Align and lock the new curtain wall grid line with the reference plane.



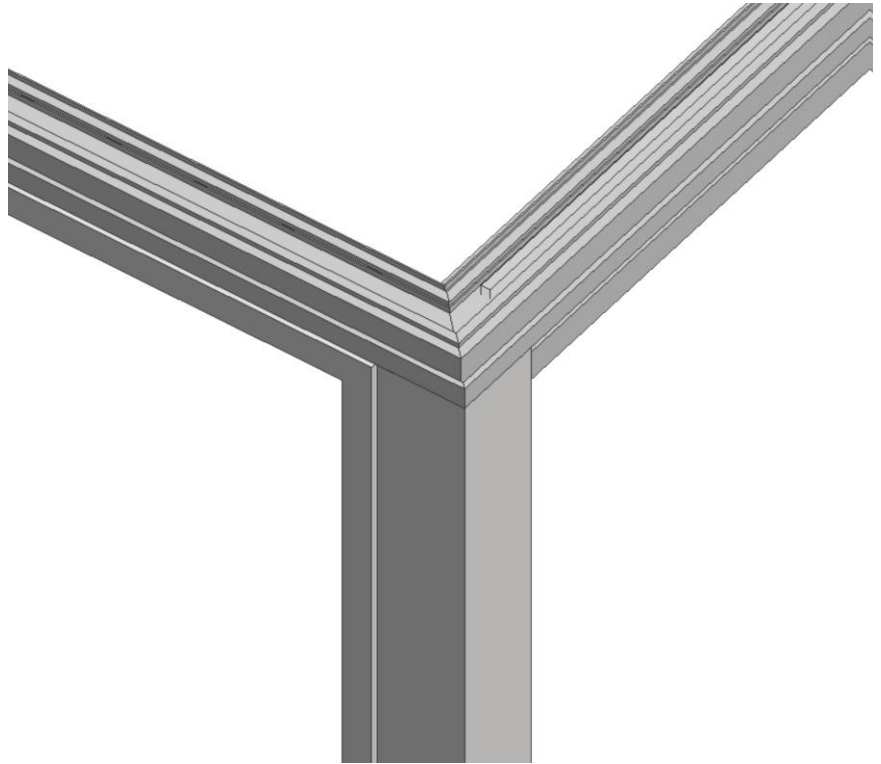
teknion

optos low profile architectural wall creation

Special Conditions

Because of the way Revit treats curtain walls; special consideration needs to be given to complete the Optos LP frame when connecting with a door at 90°.

A stand-alone component has been provided with the Optos LP families to accommodate this application. It makes it possible to create corner conditions where the top mullions will need to be cut at 45°.

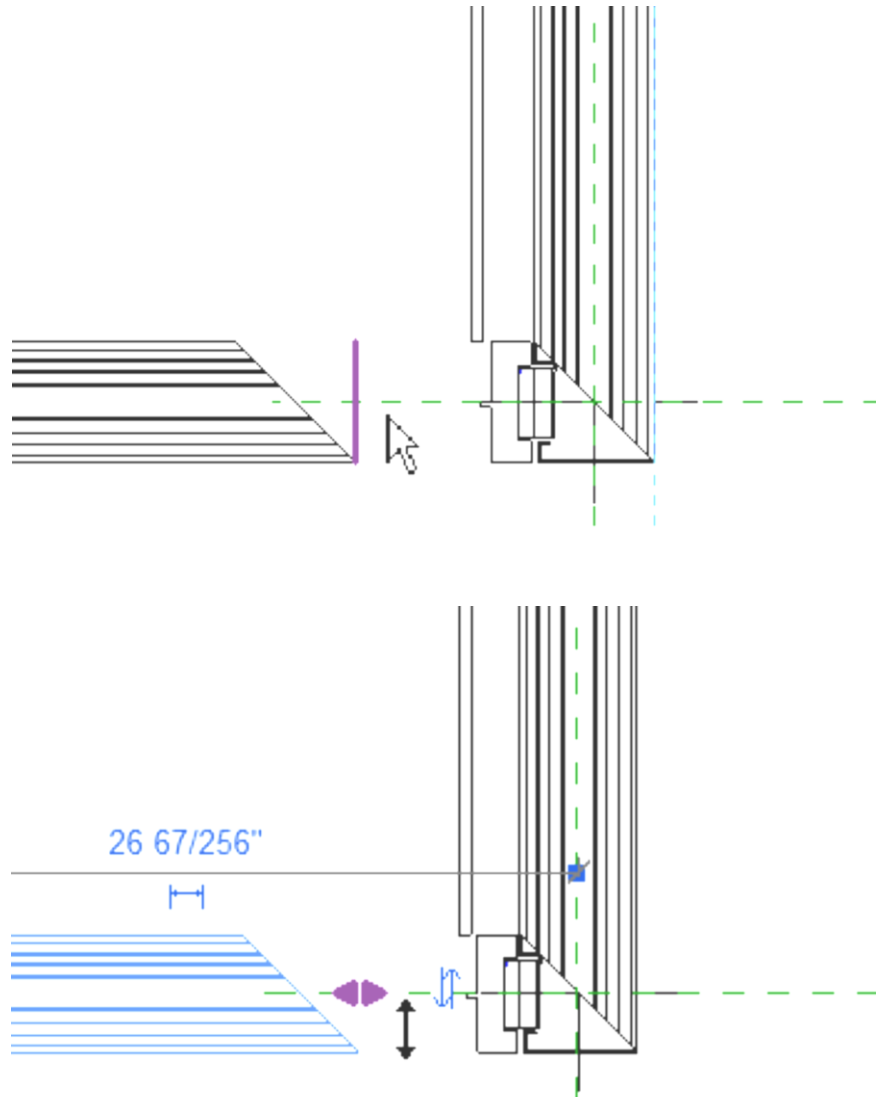


optos low profile architectural wall creation

Special Conditions

In order to create this special connection place the corner family component into your project, then use the Align tool and/or grips (length by instance) to bring it into place.

This application is already modeled within the Optos LP Architectural Walls Revit project file for user reference.



optos low
profile
architectural
wall creation

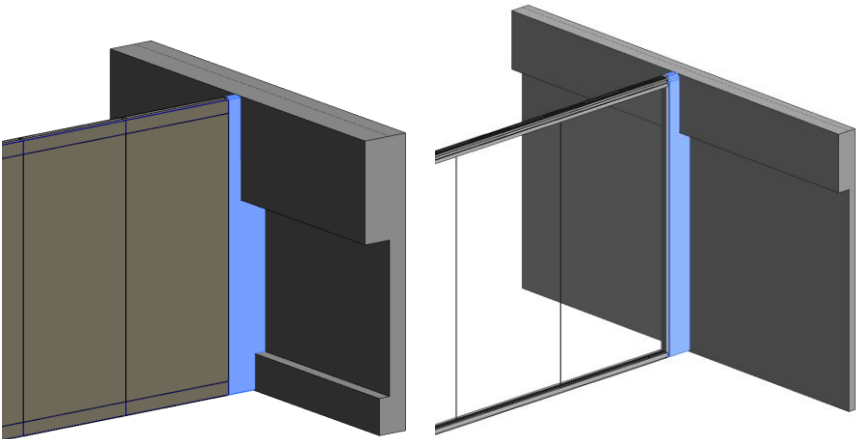
Filler Panels

In order to adapt to existing building architecture, Filler Panels allow flexibility for customized cuts.

In order to use a Filler Panel, replace the last panel of your wall with the filler panel. Then, set the options in the construction parameters group to configure your required condition:

- Curtain Panels
 - + Empty System Panel
 - + Panel-Filler-Teknion-Altos
 - + Panel-Filler-Teknion-OptosLP

Construction	
With Bulkhead	<input checked="" type="checkbox"/>
With Base Cut	<input checked="" type="checkbox"/>
Bulkhead Width	1' 0"
Bulkhead Height	2' 1"
Base Cut Width	0' 5"
Base Cut Height	1' 3"



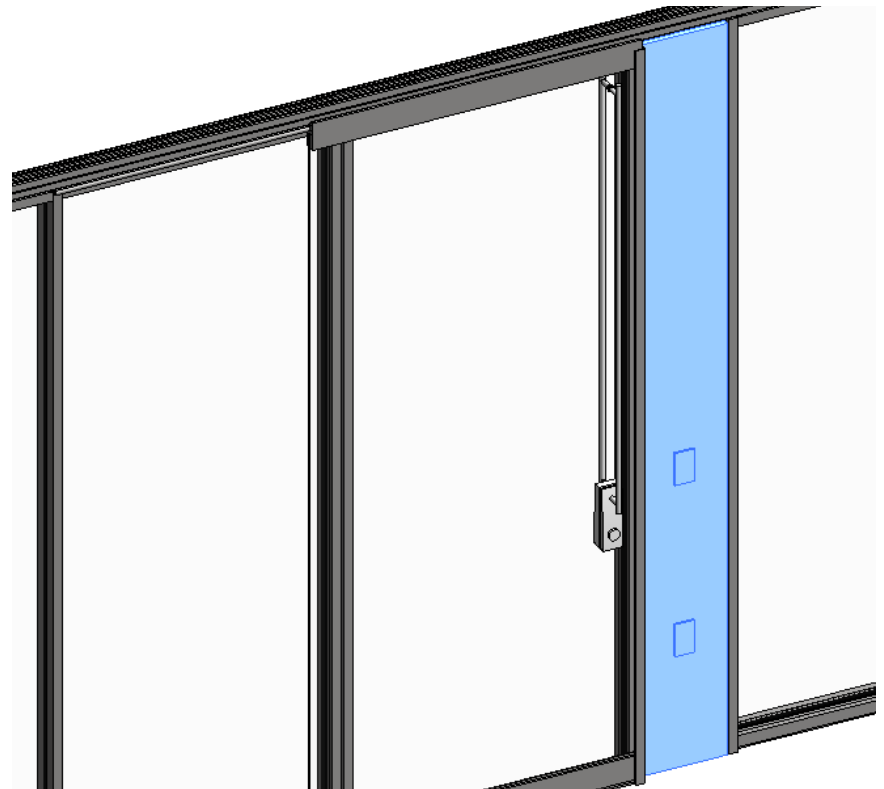
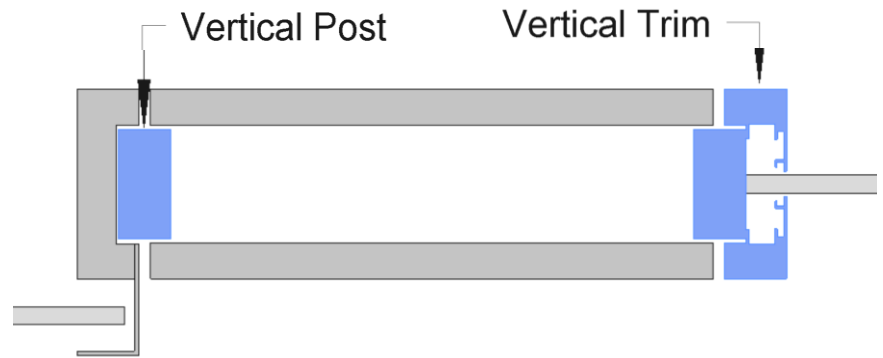
optos low profile architectural wall creation

Optos Electrical Side Panel

The Optos Electrical Side Panel allows for the incorporation of electrics to an Optos LP layout.

When using this family you may also need to add vertical mullions in each curtain grid of the panel, this will depend on its adjacent component. The mullions to add would be:

- Frame-Teknion-OptosLP-Vertical_Post: when the adjacent component is a door.
- Frame-Teknion-OptosLP-Vertical_Trim_Border_1: when adjacent component is a glass module.
- Frame-Teknion-OptosLP-Vertical_Trim_Border_2: when adjacent component is a glass module.

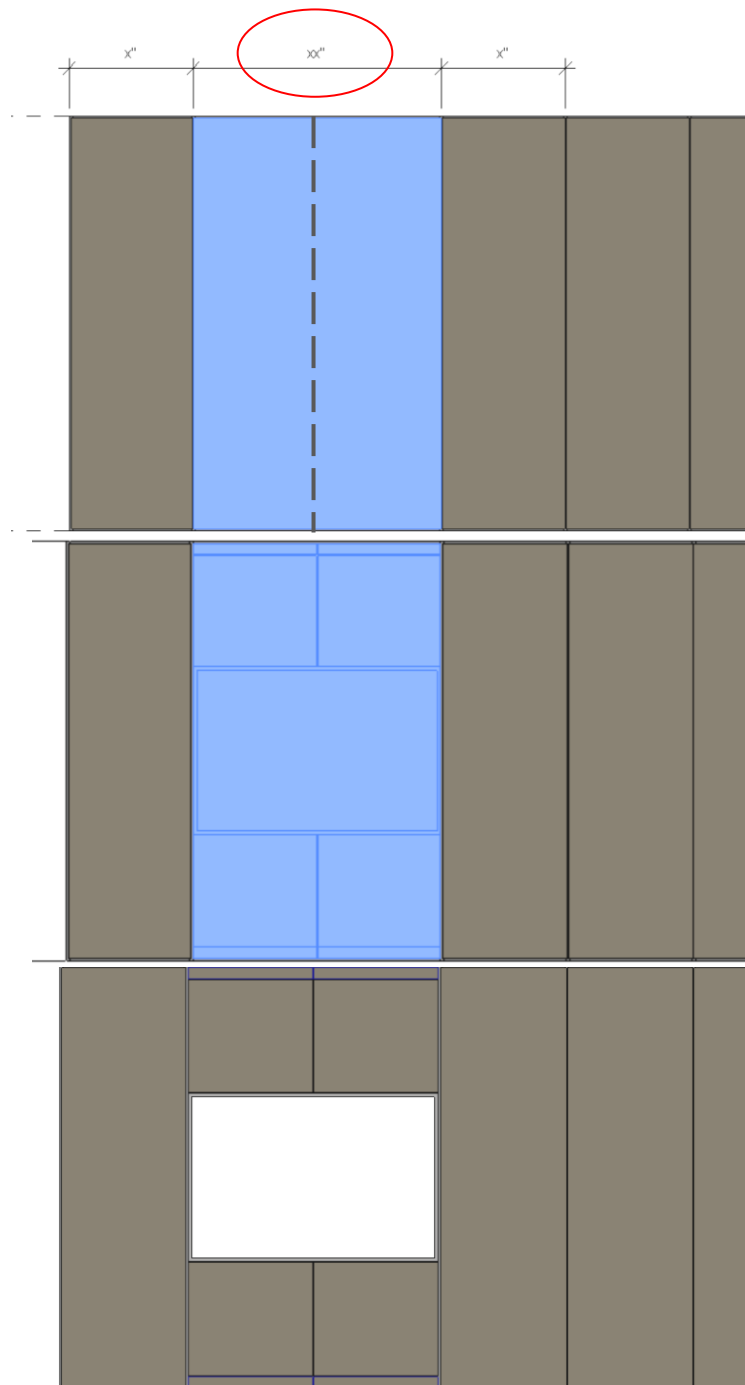


optos low profile architectural wall creation

*Framed Back painted Glass
Whiteboard Double Span*

The Framed Back painted Glass Whiteboard Double Span panel allows the creation of a double span whiteboard condition within an Altos wall module.

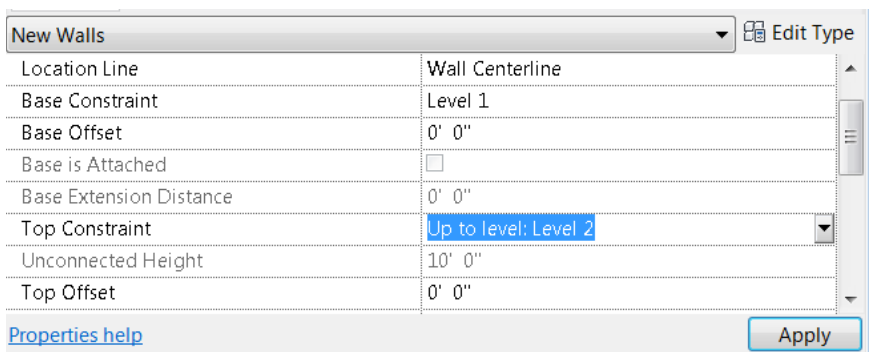
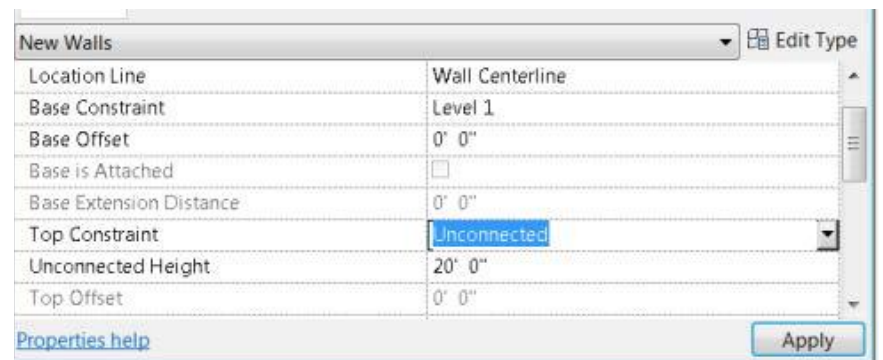
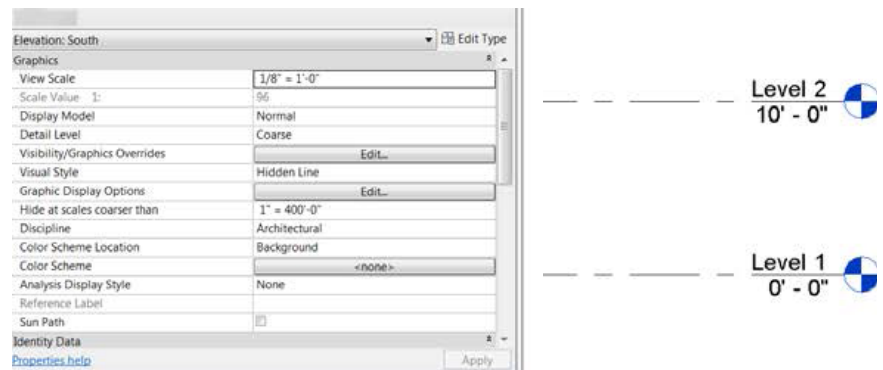
This panel option includes two panels with fascias, so when using it, make sure to calculate the total width required (two segment widths):



setting constraints – levels

The top and base of walls and connectors have to be set manually by the modeler since it's a default condition of all new projects in Revit. In order to do that, it is recommended to previously create both levels so they can be used as constraints.

Please refer to our application guides for more information on product limitations regarding height and length when designing with our Revit content.

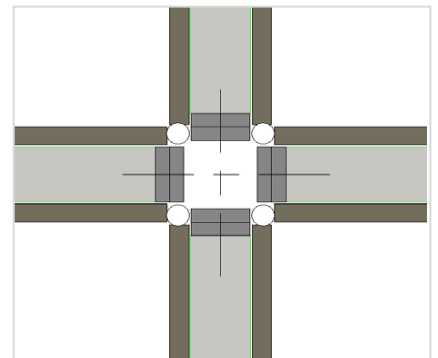
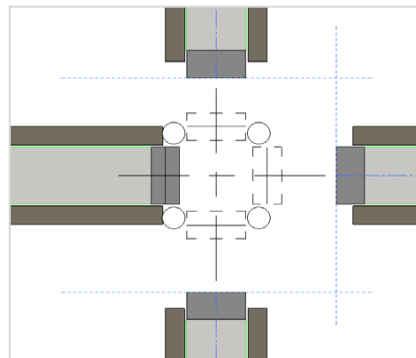
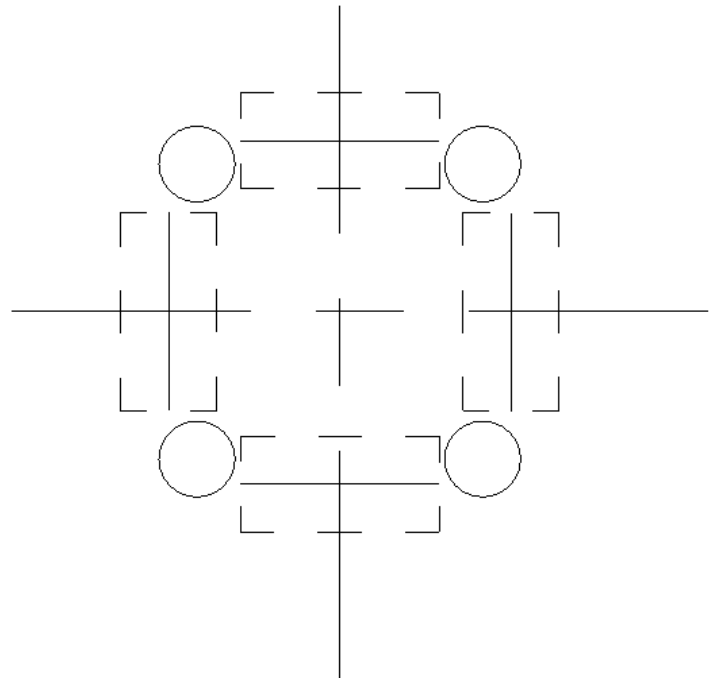


Connectors to be used between walls were created as two different Revit categories: Specialty Equipment Families and System Families.

For Specialty Equipment connections, we suggest placing them first, following the design of the layout and then draw the walls aligning them to their corresponding connection. These components have detail lines that will help you to align the wall correctly.

An important thing to keep in mind is that connections do not adjust their heights automatically to match the wall height, so a good idea would be to constrain them to a base level and align them to a top one.

FKC4 Four-Way Connection

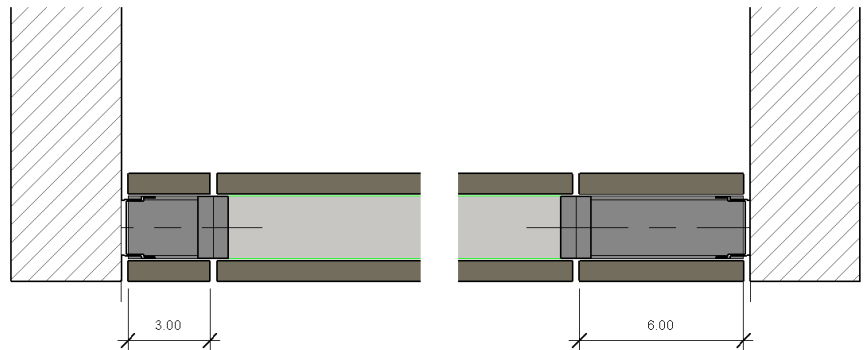


connections

Continued

System connections only apply for a few Altos scenarios. They are basically an Altos wall with a fixed dimension, so you will find them in the Curtain Wall list. Since the length of the system types may not be constrained, their names are only representative. Please keep in mind that **you must assign the correct length at the time of modeling the wall:**

- Curtain Wall
 - Adjustable_Wall_End-Teknion-Altos_End-3"_Wide_Single
 - Adjustable_Wall_End-Teknion-Altos_End-6"_Wide_Full
 - Adjustable_Wall_End-Teknion-Altos_End-6"_Wide_Segmented
 - Adjustable_Wall_End-Teknion-Altos_End-6"_Wide_Working Wall



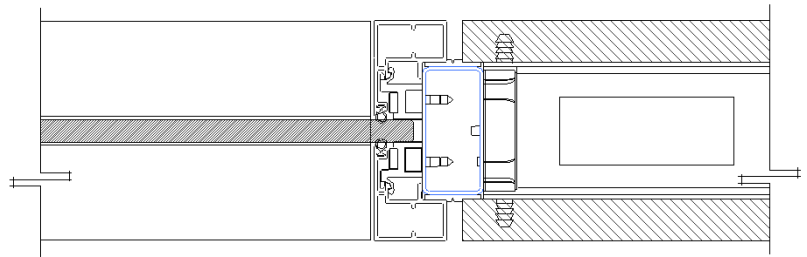
connections

Connections without 3D geometry

Some Optos LP connections include interior bracketry but these are not visible. Because of this, there is only a minimal geometry modeled to help in the creation of the glass wall. Some connections will not show any 3D geometry. For these situations model lines that help with alignment to an Optos wall are the only visible feature. The purpose of this strategy is to be able to schedule the quantities for these brackets, as it happens with any other connection.

The images below show an example of those:

1. Connection-Corner-Teknion-OptosLP-Two_Way_FZCA1_G: the connector is the vertical post, which is already added in Altos walls. In this case, the family for the connection only shows reference lines.



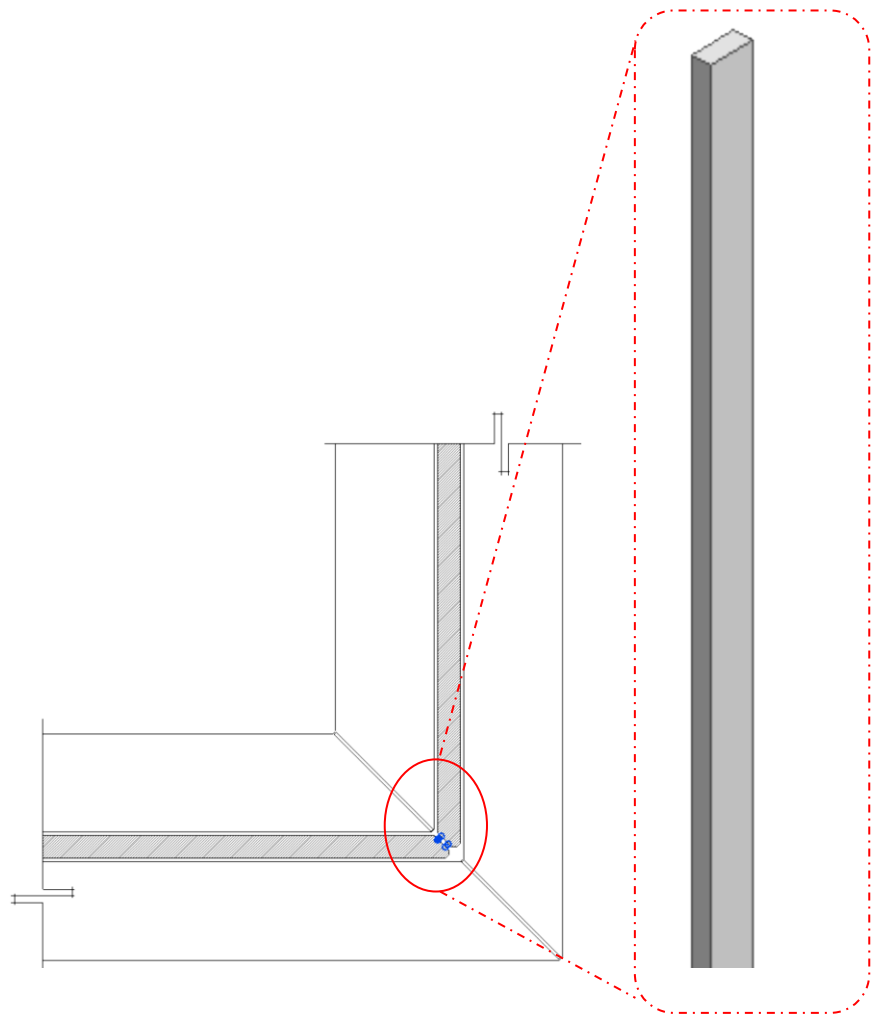
connections

*Connections without 3D geometry -
Continued*

2. Connection-Corner-Teknion-OptosLP-Two_Way_FZCY2: in this case, the connection includes interior bracketry, so that to create the connection, only the small silicon tape was modeled.

The images below show an example of those:

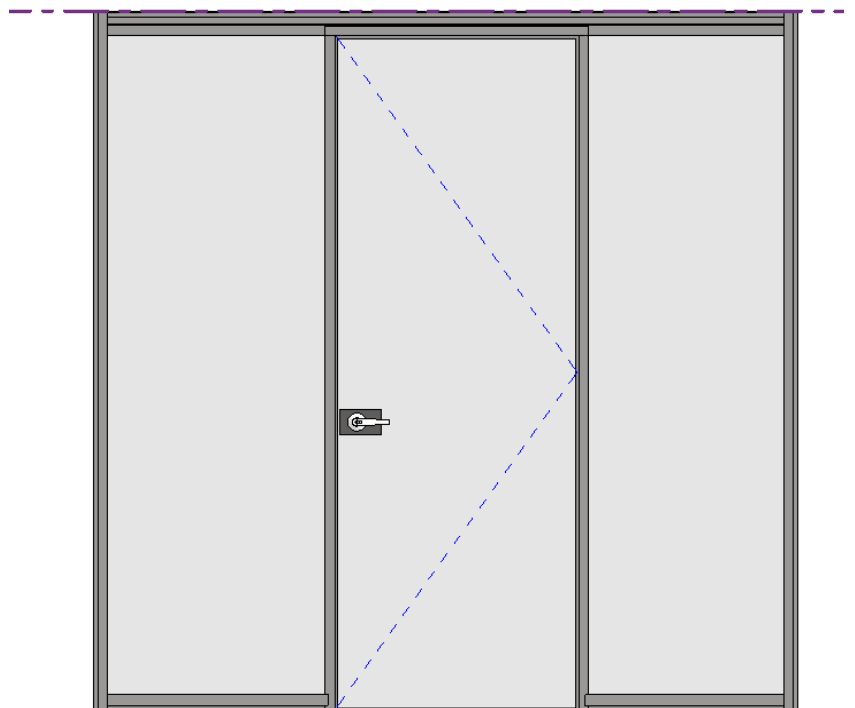
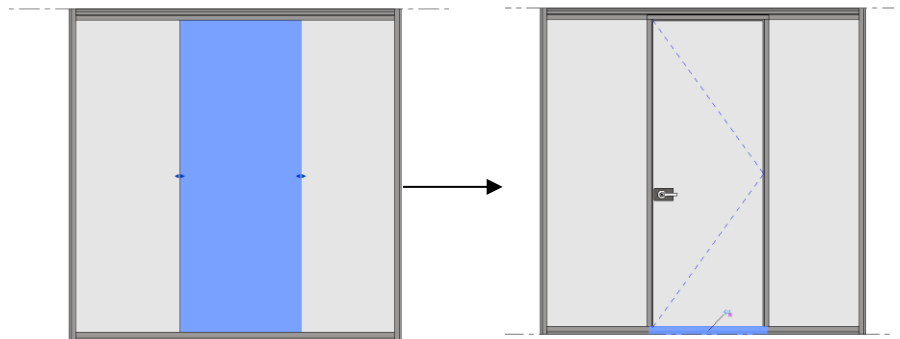
1. Connection-Corner-Teknion-OptosLP-Two_Way_FZCA1_G: the connector is the vertical post, which is already added in Altos walls. In this case, the family for the connection only shows reference lines.



doors-general guidelines

To add an Altos / Optos LP curtain wall door, you have to customize a curtain panel replacing it with a door panel.

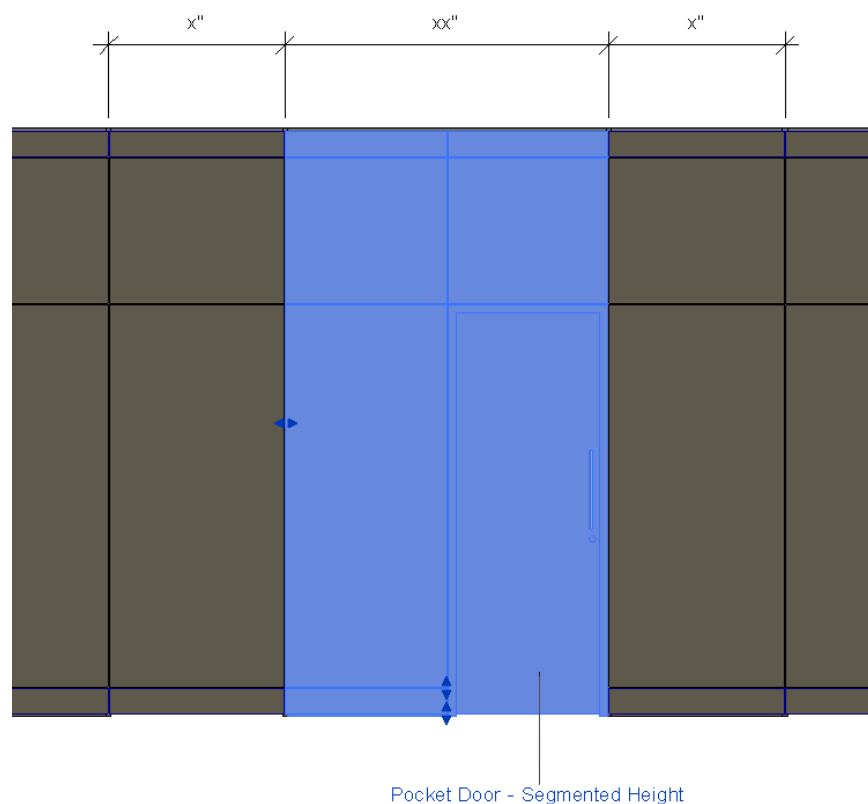
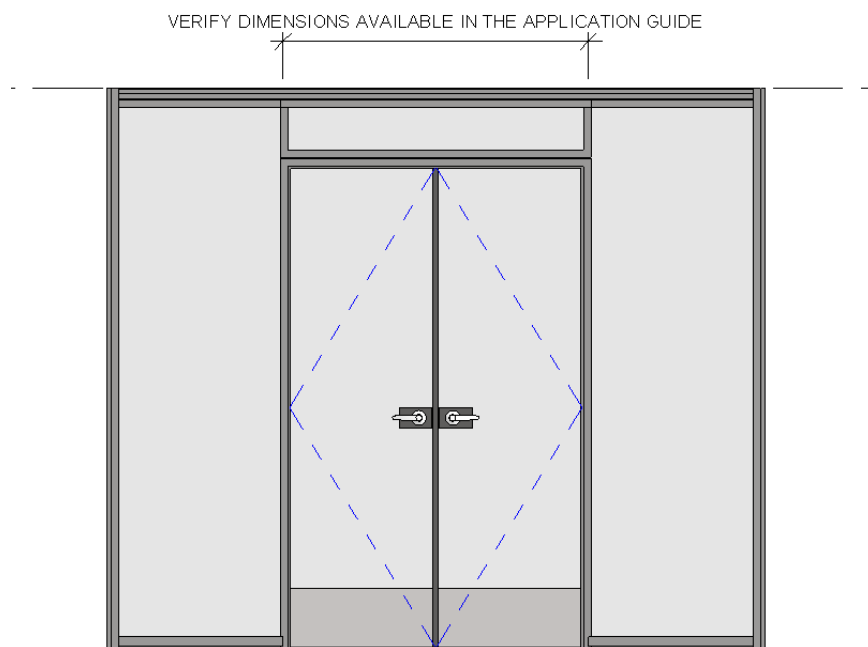
1. Open an elevation or 3D view of the curtain wall.
2. Move the cursor over an edge of the curtain panel to be customized until one of its mullions or the curtain wall highlights. Press Tab until the panel highlights and then click to select it and unpin the panel.
3. In the Type Selector, select an Altos/Optos curtain wall door to replace the panel. Only curtain wall doors can replace a curtain wall panel.
4. Highlight the mullion under the door, and click to display its pin icon.
5. Click the pin icon to unpin the mullion, and then press Delete.



doors-general guidelines

Continued

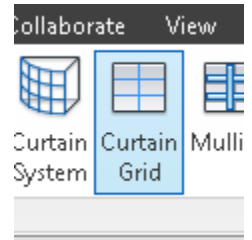
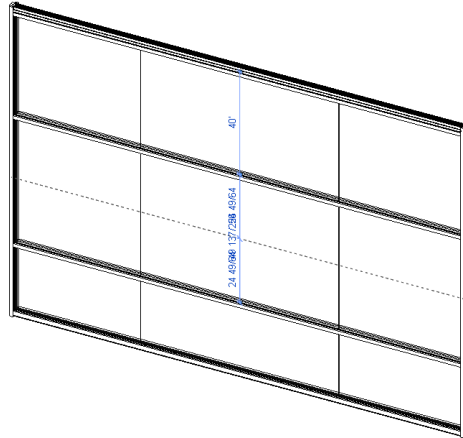
Note: As previously said for the double span panels, when using double doors or pocket doors set the total width between gridlines:



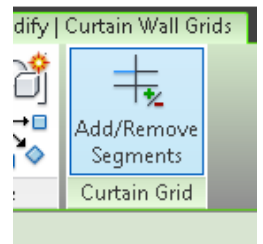
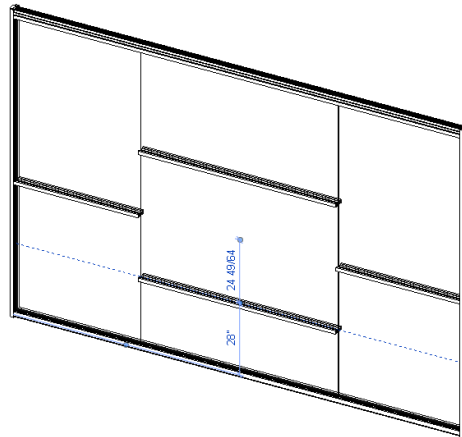
adding architectural complements components

To add curtain wall grids and inline mullions, Please follow the next steps:

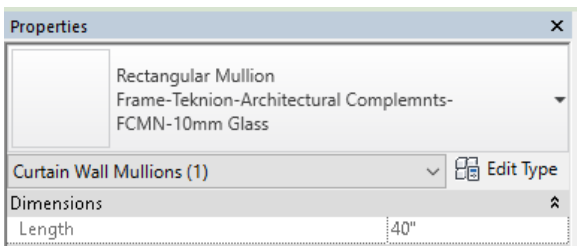
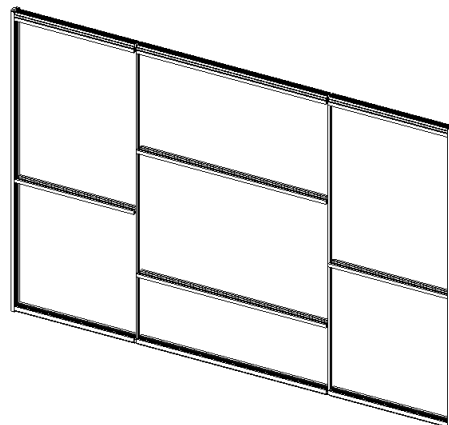
1. Select the Optos Curtain Wall and add vertical and horizontal gridlines broadly to where the inline mullions are desired. Horizontal Gridlines will have a “mullion” already be placed. These will be adjusted in a later step



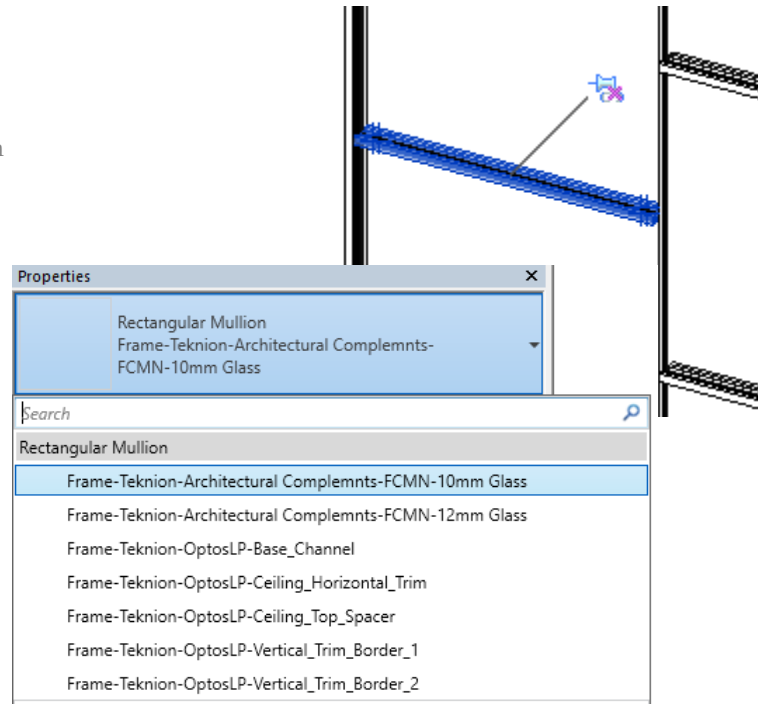
2. Once done broadly, select individual rows or columns within the grid and utilize add/remove segments to finalize the exact locations of the mullions.



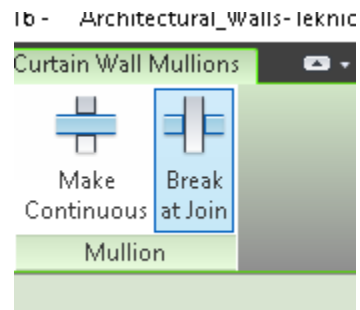
3. Use the Mullion Tool to add in the remaining mullions that need to be applied to the grid. Ensure when adding, that the mullions are set correctly to an Architectural Complements Rectangular Frame with the appropriate setting for that glass thickness.



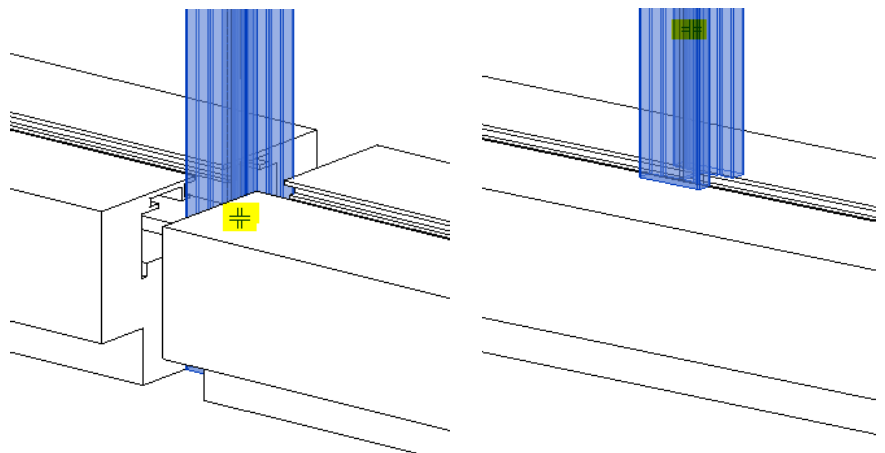
4. To fix the horizontal Mullions that are incorrectly set to the wrong profile select and unpin the mullion then set the profile underneath the properties window.



4. Ensure the end conditions for the mullions do not take priority over the continuous runs of the Top, Side, and Bottom Mullions. To do this select the mullion and select the end condition option Break at Joint.



5. The end mullion condition options can be modified gradually for each end by selecting the Mullion and selecting the + on either end.



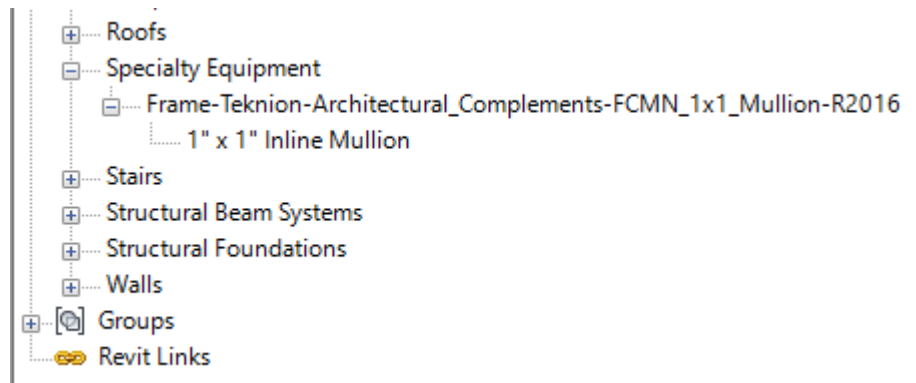
tekunion

adding architectural complements components *mullions in door frames*

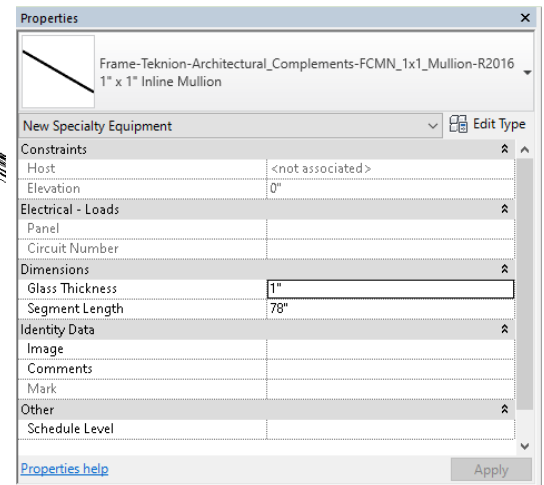
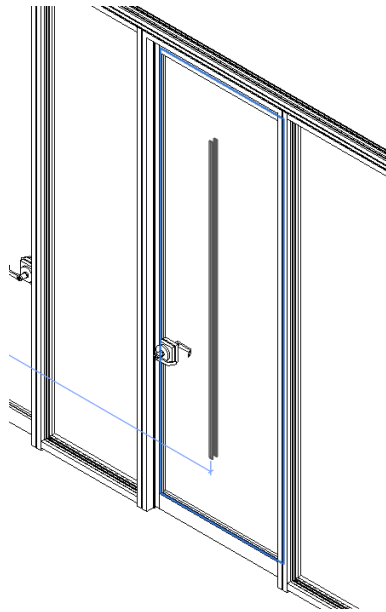
You can also add architectural complements mullions for framed doors and curtain wall panels by import them into the project as Specialty Equipment. Manually adjusting their location and size to fit the desired look after importing.

Refer to the Teknion's application guide on Architectural Complements when planning to properly select an appropriate door type to use with architectural complement mullions. The specialty equipment version of the mullion is work plane based. see below on how to apply.

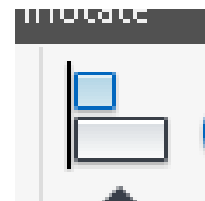
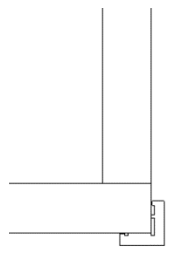
1. Once loaded into the project the family can be found in the project browser underneath Specialty Equipment.



2. Drag the family from project browser in the model space, then select an appropriate glass surface (Door or Glass plane). Adjust the thickness, length and Position as needed with the parameters of the imported component.



3. Corner Mullions are also placed as Work plane-based specialty equipment. Ensure that the Mullion Family is aligned to each side of the glass correctly after placement

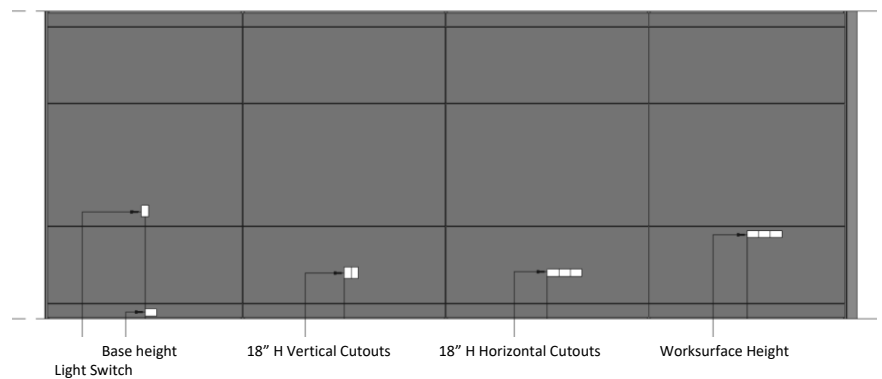


electrical fixtures

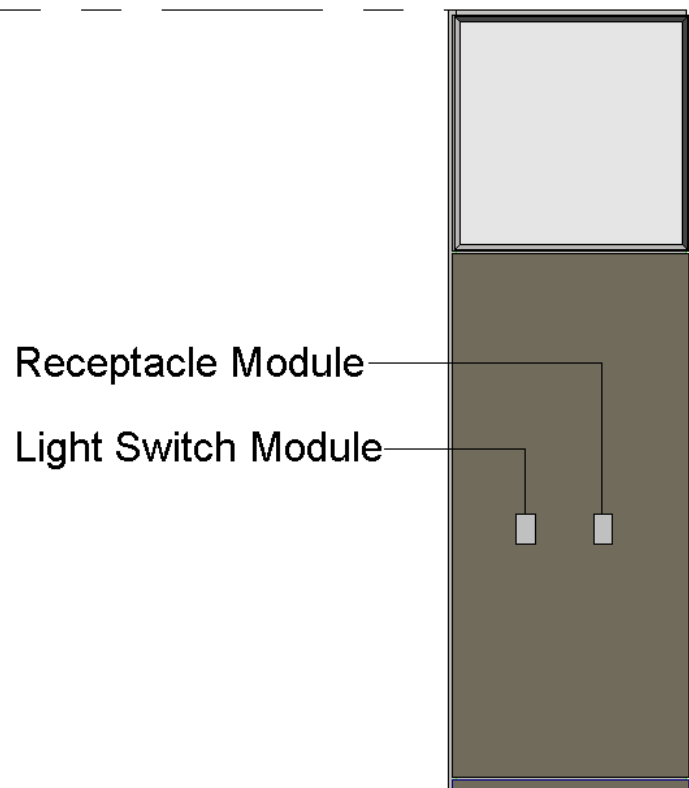
Electrical fixtures have been created to allow for planning / scheduling purposes. The family named “Hardware-Teknion-Altos-Cutouts” has five types (sub-configurations) and is used to represent the electric cut-outs that might be required in any room.

Please refer to Teknion’s application guidelines when planning with electrical fixtures.

The electric components are hosted on the wall/panel surface and have the following configurations:



The family named as “Hardware-Teknion-Altos-Electrical_Module” has two types and can be used as follows:



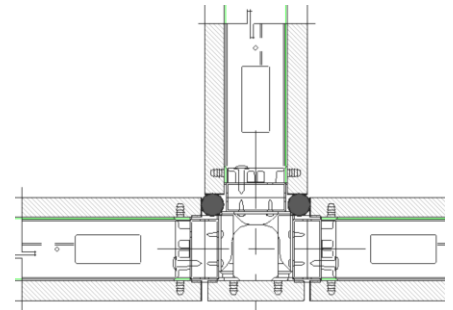
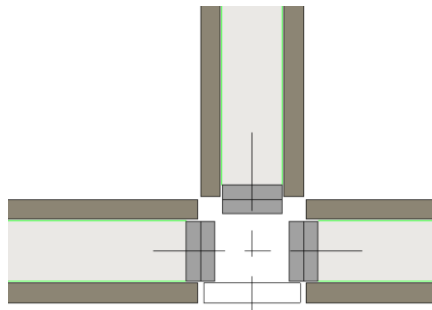
2d detail components

In order to show some more detailed views of end conditions and connections at corners, a variety of detail components are provided as non-schedulable elements.

- Detail Items
 - Brick Standard
 - Corner_Connection-Teknion-Altos_1_Altos_1_Door_90-2D
 - Corner_Connection-Teknion-Altos_1_Altos_2_Doors_180-2D
 - Corner_Connection-Teknion-Altos_3_Altos_Double_Glazed_180-2D
 - Corner_Connection-Teknion-Altos_180_Off_Module-2D
 - Corner_Connection-Teknion-Altos_180_On_Module-2D
 - Corner_Connection-Teknion-Altos_Four_Way-2D
 - Corner_Connection-Teknion-Altos_Three_Way_135-2D
 - Corner_Connection-Teknion-Altos_Three_Way_180-2D
 - Corner_Connection-Teknion-Altos_Two_Way_90-2D
 - Corner_Connection-Teknion-Altos_Two_Way_135-2D
 - Corner_Connection-Teknion-OptosLP_1_Optos_90_1_Optos_180_2_Doors_End-2D
 - Corner_Connection-Teknion-OptosLP_Altos_1_Altos_1_Door-2D
 - Corner_Connection-Teknion-OptosLP_Altos_1_Altos_1_Optos-2D

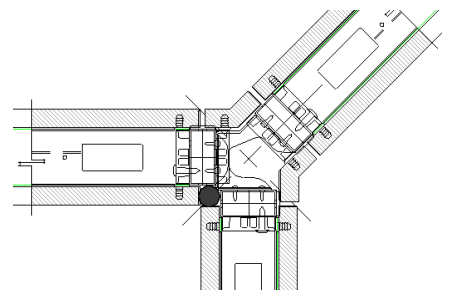
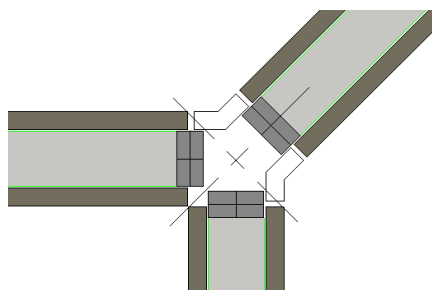
- Connection: Connection-Corner-Teknion-Altos- Three_Way_FKCH180

- Detail: Corner_Connection-Teknion-Altos-Three_Way_180-2D



- Connection: Connection-Corner-Teknion-Altos-Three_Way_FKCH133

- Detail: Corner_Connection-Teknion-Altos-Three_Way_135-2D



revit schedules

Schedules in Revit offer many configuration options allowing a user to extract information from Revit content within a project. Because there are different family categories, a user may need to create different schedules to capture and communicate all necessary information. The fields, filters and sorting options for schedules can vary depending on the family category being scheduled.

In order to facilitate the creation of schedules and their filters, the parameters Model and Description of Teknion's models were filled in with words in common between families, for example:

- Schedule: *Modules - Clerestory*

The screenshot shows the 'Schedule Properties' dialog box with the 'Filter' tab selected. The 'Filter by' section has a dropdown set to 'Description' and a text box containing 'Clerestory'. Below this, there are three 'And' filter rows. The first 'And' row has a dropdown set to 'Model' and a text box containing 'FYCG'. The second and third 'And' rows have dropdowns set to '(none)' and empty text boxes. At the bottom are 'OK', 'Cancel', and 'Help' buttons.

Modules - Clerestory			
Model	Description	Glass Panel Material	Frame Finish
FYCG	Optos Clerestory Glass Module	Glass - Teknion - A5 - Standard - Clear	Metal - Teknion - AC - Clear Anodized
FYCG	Optos Clerestory Glass Module	Glass - Teknion - A5 - Standard - Clear	Metal - Teknion - AC - Clear Anodized
FYCG	Optos Clerestory Glass Module	Glass - Teknion - A5 - Standard - Clear	Metal - Teknion - AC - Clear Anodized
FYCG	Optos Clerestory Glass Module	Glass - Teknion - A5 - Standard - Clear	Metal - Teknion - AC - Clear Anodized
FYCG	Optos Clerestory Glass Module	Glass - Teknion - A5 - Standard - Clear	Metal - Teknion - AC - Clear Anodized
FYCG	Optos Clerestory Glass Module	Glass - Teknion - A5 - Standard - Clear	Metal - Teknion - AC - Clear Anodized
FYCG	Optos Clerestory Glass Module	Glass - Teknion - A5 - Standard - Clear	Metal - Teknion - AC - Clear Anodized
FYCG	Optos Clerestory Glass Module	Glass - Teknion - A5 - Standard - Clear	Metal - Teknion - AC - Clear Anodized
FYCG	Optos Clerestory Glass Module	Glass - Teknion - A5 - Standard - Clear	Metal - Teknion - AC - Clear Anodized
FYCG	Optos Clerestory Glass Module	Glass - Teknion - A5 - Standard - Clear	Metal - Teknion - AC - Clear Anodized
FYCG	Optos Clerestory Glass Module	Glass - Teknion - A5 - Standard - Clear	Metal - Teknion - AC - Clear Anodized
FYCG	Optos Clerestory Glass Module	Glass - Teknion - A5 - Standard - Clear	Metal - Teknion - AC - Clear Anodized
FYCG	Optos Clerestory Glass Module	Glass - Teknion - A5 - Standard - Clear	Metal - Teknion - AC - Clear Anodized
FYCG	Optos Clerestory Glass Module	Glass - Teknion - A5 - Standard - Clear	Metal - Teknion - AC - Clear Anodized

Grand total: 14

To ensure that no component is missing in the schedule, we recommend starting with a “multi-category schedule” and then apply the necessary filters.

- Schedule: *Modules – Altos Configuration*

Schedule Properties

Fields | **Filter** | Sorting/Grouping | Formatting | Appearance

Filter by: Model does not contain FFG

And: Model does not contain Mid-Glass

And: (none)

And: (none)

OK Cancel Help

Count	Family	Module Configuration
1	Panel Filler-Teknon-Altos	FZFF
1	Panel Filler-Teknon-Altos	FZFF
2		
1	Panel Module-Teknon-Altos-Monolithic_Fascia_And_Partial_Monolithic_With_Base_Fascia	Monolithic Fascia Side A, Partial Monolithic with Base Fascia Side B
1	Panel Module-Teknon-Altos-Monolithic_Fascia_And_Partial_Monolithic_With_Base_Fascia	Monolithic Fascia Side A, Segmented Partial Monolithic with Base Fascia
1	Panel Module-Teknon-Altos-Monolithic_Fascia_And_Partial_Monolithic_With_Base_Fascia	Monolithic Fascia Side A, Working Wall Partial Monolithic with Base Fascia
1	Panel Module-Teknon-Altos-Monolithic_Fascia_And_Partial_Monolithic_With_Base_Fascia	Segmented Monolithic Fascia Side A, Partial Monolithic with Base Fascia
1	Panel Module-Teknon-Altos-Monolithic_Fascia_And_Partial_Monolithic_With_Base_Fascia	Segmented Monolithic Fascia Side A, Segmented Partial Monolithic with Base Fascia
1	Panel Module-Teknon-Altos-Monolithic_Fascia_And_Partial_Monolithic_With_Base_Fascia	Segmented Monolithic Fascia Side A, Working Wall Partial Monolithic with Base Fascia
1	Panel Module-Teknon-Altos-Monolithic_Fascia_And_Partial_Monolithic_With_Base_Fascia	Working Wall Monolithic Fascia Side A, Partial Monolithic with Base Fascia
1	Panel Module-Teknon-Altos-Monolithic_Fascia_And_Partial_Monolithic_With_Base_Fascia	Working Wall Monolithic Fascia Side A, Segmented Partial Monolithic with Base Fascia
1	Panel Module-Teknon-Altos-Monolithic_Fascia_And_Partial_Monolithic_With_Base_Fascia	Working Wall Monolithic Fascia Side A, Working Wall Partial Monolithic with Base Fascia
9		
1	Panel Module-Teknon-Altos-Monolithic_Fascia_And_Partial_Monolithic_With_Ceiling_Fascia	Monolithic Fascia Side A, Partial Monolithic with Ceiling Fascia Side B
1	Panel Module-Teknon-Altos-Monolithic_Fascia_And_Partial_Monolithic_With_Ceiling_Fascia	Monolithic Fascia Side A, Segmented Partial Monolithic with Ceiling Fascia
1	Panel Module-Teknon-Altos-Monolithic_Fascia_And_Partial_Monolithic_With_Ceiling_Fascia	Monolithic Fascia Side A, Working Wall Partial Monolithic with Ceiling Fascia
1	Panel Module-Teknon-Altos-Monolithic_Fascia_And_Partial_Monolithic_With_Ceiling_Fascia	Segmented Monolithic Fascia Side A, Partial Monolithic with Ceiling Fascia
1	Panel Module-Teknon-Altos-Monolithic_Fascia_And_Partial_Monolithic_With_Ceiling_Fascia	Segmented Monolithic Fascia Side A, Segmented Partial Monolithic with Ceiling Fascia
1	Panel Module-Teknon-Altos-Monolithic_Fascia_And_Partial_Monolithic_With_Ceiling_Fascia	Segmented Monolithic Fascia Side A, Working Wall Partial Monolithic with Ceiling Fascia
1	Panel Module-Teknon-Altos-Monolithic_Fascia_And_Partial_Monolithic_With_Ceiling_Fascia	Working Wall Monolithic Fascia Side A, Partial Monolithic with Ceiling Fascia
1	Panel Module-Teknon-Altos-Monolithic_Fascia_And_Partial_Monolithic_With_Ceiling_Fascia	Working Wall Monolithic Fascia Side A, Segmented Partial Monolithic with Ceiling Fascia
1	Panel Module-Teknon-Altos-Monolithic_Fascia_And_Partial_Monolithic_With_Ceiling_Fascia	Working Wall Monolithic Fascia Side A, Working Wall Partial Monolithic with Ceiling Fascia
9		
1	Panel Module-Teknon-Altos-Monolithic_Fascia_And_Standard_Fascia	Monolithic Fascia Side A, Working Wall Fascia Side B
1	Panel Module-Teknon-Altos-Monolithic_Fascia_And_Standard_Fascia	Monolithic Side A, Segmented Fascia Side B
1	Panel Module-Teknon-Altos-Monolithic_Fascia_And_Standard_Fascia	Segmented Monolithic Fascia Side A, Segmented Partial Monolithic with Base Fascia

revit schedules

Continued

To schedule components such as doors, use the door category schedule in Revit.

- Schedule: *Door - General Schedule*

Family	Type
Door-Barn_Full_Height-Teknion-Altos-Double_Glass	Glass Barn Door
Door-Barn_Full_Height-Teknion-Altos-Glass	Glass Barn Door Full Height
Door-Barn_Full_Height-Teknion-Altos-Solid	Glass Insert
Door-Barn_Full_Height-Teknion-Altos-Solid	Solid
Door-Barn_Low_Profile-Teknion-Altos-Double_Glass	Glass Barn Door Low Profile
Door-Barn_Low_Profile-Teknion-Altos-Glass	Glass Barn Door Low Profile
Door-Barn_Segmented_Height-Teknion-Altos-Glass	Glass Barn Door Segmented Height
Door-Barn_Segmented_Height-Teknion-Altos-Solid_Glass_Insert	Glass Insert
Door-Full_Height-Teknion-Altos-Pocket	Solid
Door-Hinged_Full_Height-Teknion-Altos-Double	Glass Insert
Door-Hinged_Full_Height-Teknion-Altos-Double	Solid
Door-Hinged_Full_Height-Teknion-Altos-Left_Swing	Glass Insert
Door-Hinged_Full_Height-Teknion-Altos-Left_Swing	Solid
Door-Hinged_Full_Height-Teknion-Altos-Right_Swing	Glass Insert
Door-Hinged_Full_Height-Teknion-Altos-Right_Swing	Solid
Door-Hinged_Glass_Full_Height-Teknion-Altos-Double	Glass Double Door
Door-Hinged_Glass_Full_Height-Teknion-Altos-Left_Swing	Glass Door
Door-Hinged_Glass_Full_Height-Teknion-Altos-Right_Swing	Glass Door
Door-Hinged_Glass_Segmented_Height-Teknion-Altos-Double	84", Double Glass Fascia
Door-Hinged_Glass_Segmented_Height-Teknion-Altos-Double	84", Single Glass Fascia
Door-Hinged_Glass_Segmented_Height-Teknion-Altos-Double	84", Solid Fascia
Door-Hinged_Glass_Segmented_Height-Teknion-Altos-Left_Swing	84", Double Glass Fascia
Door-Hinged_Glass_Segmented_Height-Teknion-Altos-Left_Swing	84", Single Glass Fascia
Door-Hinged_Glass_Segmented_Height-Teknion-Altos-Left_Swing	84", Solid Fascia
Door-Hinged_Glass_Segmented_Height-Teknion-Altos-Right_Swing	84", Double Glass Fascia
Door-Hinged_Glass_Segmented_Height-Teknion-Altos-Right_Swing	84", Single Glass Fascia
Door-Hinged_Glass_Segmented_Height-Teknion-Altos-Right_Swing	84", Solid Fascia
Door-Hinged_Segmented_Height-Teknion-Altos-Double	84", Glass Insert, Double Glass Fascia
Door-Hinged_Segmented_Height-Teknion-Altos-Double	84", Glass Insert, Single Glass Fascia

material libraries

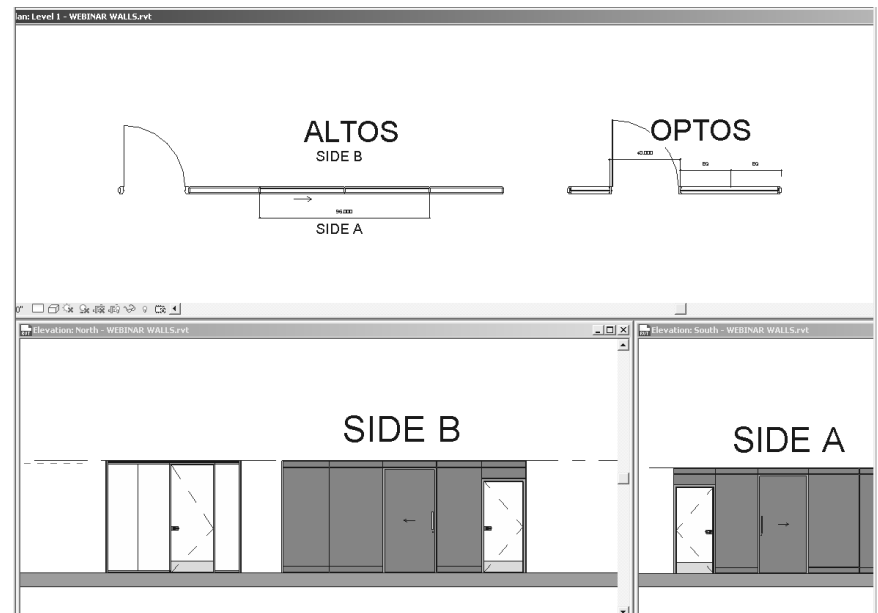
Architectural Fabrics

Glass (Vanceva)

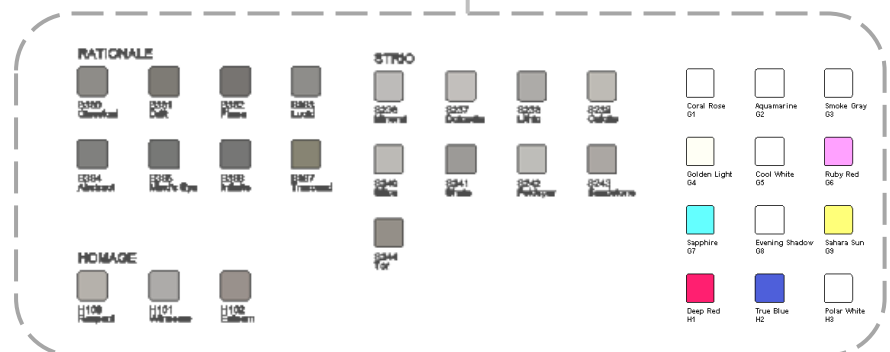
Veneer & Laminate Finishes

In order to customize the finishes of Teknion's Revit walls, we have provided three Revit Projects containing materials and finishes along with their respective tileable images.

These material library files allow for directly importing the Material's project parameters to your project and apply them to desired components of your Revit design.



Transfer
Project Standards



family & curtain panel type index for altos walls

The following is an index showing the relationship of available Altos Revit Wall Families and their types (Available combinations of fascias for Side A and Side B)

Starting with a Revit Wall Family, the options are to configure its segments with any types for that family or any type from any other family listed easily opening a wide range of configuration possibilities!

Family naming structure:

- Panel-Module-Teknion-Altos-"Side A Reference"&"Side B Reference"

Configurations' references

- Names without "&": refer to panels with the same configuration on both sides (*) OR all configurations in Side B (**)
- Monolithic: Side of module without Ceiling or Base Fascias (Monolithic, Segmented Monolithic or Working Wall Monolithic)
- With Ceiling: Side of module with Ceiling Fascia only
- With Base: Side of module with Base Fascia only

For types names:

- Full: Fascia without divisions
- Segmented: Fascia with one division
- Working Wall: Fascia with two divisions

Please see next pages for full index.

Family Name	Type Name
Panel-Module-Teknion-Altos-Glass_Double	- FFGD, Full Wall - FFGD, Segmented - FFGD, Working Wall
Panel-Module-Teknion-Altos-Glass_Single	- FFGC, Full Wall - FFGC, Segmented - FFGC, Working Wall
Panel-Module-Teknion-Altos-Mid_Glass_Monolithic	- Working Wall Mid-Glass, Double Glass - Working Wall Mid-Glass, Single Glass
Panel-Module-Teknion-Altos-Mid_Glass_Monolithic_Top_Glass_Fascia	- Working Wall Monolithic Mid-Glass and Top Glass Fascia, Double Glass - Working Wall Monolithic Mid-Glass and Top Glass Fascia, Single Glass
Panel-Module-Teknion-Altos-Mid_Glass_Monolithic_With_Base_Fascia_Top_Glass_Fascia	- Working Wall Mid-Glass and Top Glass Fascia, Base Fascia, Double Glass - Working Wall Mid-Glass and Top Glass Fascia, Base Fascia, Single Glass
Panel-Module-Teknion-Altos-Mid_Glass_Monolithic_With_Ceiling_Fascia_Top_Glass_Fascia	- Working Wall Mid-Glass and Top Glass Fascia, Ceiling Fascia, Double Glass - Working Wall Mid-Glass and Top Glass Fascia, Ceiling Fascia, Single Glass
Panel-Module-Teknion-Altos-Mid_Glass_Top_Glass_Fascia	- Working Wall Mid-Glass and Top Glass Fascia, Double Glass - Working Wall, Mid-Glass and Top Glass Fascia, Single Glass
Panel-Module-Teknion-Altos-Mid_Glass_With_Base	- Working Wall Mid-Glass, Base Fascia, Double Glass - Working Wall Mid-Glass, Base Fascia, Single Glass
Panel-Module-Teknion-Altos-Mid_Glass_With_Ceiling	- Working Wall Mid-Glass, Ceiling Fascia, Double Glass - Working Wall Mid-Glass, Ceiling Fascia, Single Glass
Panel-Module-Teknion-Altos-Mid_Glass_With_Ceiling_and_Base	- Working Wall Mid-Glass, Double Glass - Working Wall Mid-Glass, Single Glass

Continues on next page

Family Name	Type Name
Panel-Module-Teknion-Altos-Monolithic	<ul style="list-style-type: none"> - Full Monolithic Side A, Full Monolithic Side B - Full Monolithic Side A, Segmented Monolithic Fascia Side B - Full Monolithic Side A, Working Wall Monolithic Fascia B - Segmented Monolithic Fascia Side A, Segmented Monolithic Fascia Side B - Segmented Monolithic Fascia Side A, Working Wall Monolithic Fascia Side B - Working Wall Monolithic Fascia Side A, Working Wall Monolithic Fascia Side B
Panel-Module-Teknion-Altos-Monolithic_&_With_Base	<ul style="list-style-type: none"> - Full Monolithic Fascia Side A, Full With Base Fascia Side B - Full Monolithic Fascia Side A, Segmented With Base Fascia Side B - Full Monolithic Fascia Side A, Working Wall With Base Fascia Side B - Segmented Monolithic Fascia Side A, Full With Base Fascia Side B - Segmented Monolithic Fascia Side A, Segmented With Base Fascia Side B - Segmented Monolithic Fascia Side A, Working Wall With Base Fascia Side B - Working Wall Monolithic Fascia Side A, Full With Base Fascia Side B - Working Wall Monolithic Fascia Side A, Segmented With Base Fascia Side B - Working Wall Monolithic Fascia Side A, Working Wall With Base Fascia Side B
Panel-Module-Teknion-Altos-Monolithic_&_With_Ceiling	<ul style="list-style-type: none"> - Full Monolithic Fascia Side A, Full With Ceiling Fascia Side B - Full Monolithic Fascia Side A, Segmented With Ceiling Fascia Side B - Full Monolithic Fascia Side A, Working Wall With Ceiling Fascia Side B - Segmented Monolithic Fascia Side A, Full With Ceiling Fascia Side B - Segmented Monolithic Fascia Side A, Segmented With Ceiling Fascia Side B - Segmented Monolithic Fascia Side A, Working Wall With Ceiling Fascia Side B - Working Wall Monolithic Fascia Side A, Full With Ceiling Fascia Side B - Working Wall Monolithic Fascia Side A, Segmented With Ceiling Fascia Side B - Working Wall Monolithic Fascia Side A, Working Wall With Ceiling Fascia Side B
Continues on next page	

Family Name	Type Name
Panel-Module-Teknion-Altos-Monolithic_&_With_Ceiling_and_Base	<ul style="list-style-type: none"> - Full Monolithic Fascia Side A, Working Wall Fascia Side B - Full Monolithic Fascia Side A, Full Fascia Side B - Full Monolithic Side A, Segmented Fascia Side B - Segmented Monolithic Fascia Side A, Full Fascia Side B - Segmented Monolithic Fascia Side A, Segmented Fascia Side B - Segmented Monolithic Fascia Side A, Working Wall Fascia Side B - Working Wall Monolithic Fascia Side A, Full Fascia Side B - Working Wall Monolithic Fascia Side A, Segmented Fascia Side B - Working Wall Monolithic Fascia Side A, Working Wall Fascia Side B
Panel-Module-Teknion-Altos-Monolithic_Top_Glass_Fascia	<ul style="list-style-type: none"> - Segmented Monolithic Fascia Side A, Segmented Monolithic Fascia Side B, Top Double Glass Fascia - Segmented Monolithic Fascia Side A, Segmented Monolithic Fascia Side B, Top Single Glass Fascia - Segmented Monolithic Fascia Side A, Working Wall Monolithic Fascia, Top Double Glass Fascia - Segmented Monolithic Fascia Side A, Working Wall Monolithic Fascia, Top Single Glass Fascia - Working Wall Monolithic Fascia Side A, Working Wall Monolithic Fascia Side B, Top Double Glass Fascia - Working Wall Monolithic Fascia Side A, Working Wall Monolithic Fascia Side B, Top Single Glass Fascia
Panel-Module-Teknion-Altos-Monolithic_With_Clerestory	<ul style="list-style-type: none"> - Segmented Monolithic With Clerestory Side A, Segmented Monolithic With Clerestory Side B - Segmented Monolithic With Clerestory Side A, Working Wall Monolithic With Clerestory Side B - Working Wall Monolithic With Clerestory Side A, Working Wall Monolithic With Clerestory Side B

Continues on next page

Family Name	Type Name
Panel-Module-Teknion-Altos- Whiteboard_Double_Monolithic (**)	<ul style="list-style-type: none"> - Whiteboard Double Monolithic Side A, Double Full Fascia Side B - Whiteboard Double Monolithic Side A, Double Monolithic Fascia Side B - Whiteboard Double Monolithic Side A, Double Full With Base Fascia Side B - Whiteboard Double Monolithic Side A, Double Full With Ceiling Fascia Side B - Whiteboard Double Monolithic Side A, Double Segmented Fascia Side B - Whiteboard Double Monolithic Side A, Double Segmented Monolithic Fascia Side B - Whiteboard Double Monolithic Side A, Double Segmented With Base Fascia Side B - Whiteboard Double Monolithic Side A, Double Segmented With Ceiling Fascia Side B - Whiteboard Double Monolithic Side A, Double Working Wall Fascia Side B - Whiteboard Double Monolithic Side A, Double Working Wall Monolithic Fascia Side B - Whiteboard Double Monolithic Side A, Double Working Wall With Base Fascia Side B - Whiteboard Double Monolithic Side A, Double Working Wall With Ceiling Fascia Side B
Panel-Module-Teknion-Altos- Whiteboard_Double_Monolithic_&_Double_Whiteboard	<ul style="list-style-type: none"> - Whiteboard Double Monolithic Side A, Whiteboard Double With Ceiling and Base Side B - Whiteboard Double Monolithic Side A, Whiteboard Double Monolithic Side B - Whiteboard Double Monolithic Side A, Whiteboard Double With Base Side B - Whiteboard Double Monolithic Side A, Whiteboard Double With Ceiling Side B
Panel-Module-Teknion-Altos- Whiteboard_Double_Monolithic_&_Double_Whiteboard_Top_Glass_Fascia	<ul style="list-style-type: none"> - Whiteboard Double Monolithic Side A, Whiteboard Double Monolithic Fascia Side B, Top Double Glass Fascia - Whiteboard Double Monolithic Side A, Whiteboard Double Monolithic Fascia Side B, Top Single Glass Fascia - Whiteboard Double Monolithic Side A, Whiteboard Double With Base Side B, Top Double Glass Fascia - Whiteboard Double Monolithic Side A, Whiteboard Double With Base Side B, Top Single Glass Fascia

Continues on next page

Family Name	Type Name
<p>Panel-Module-Teknion-Altos- Whiteboard_Double_Monolithic_Top_Glass_ Fascia</p>	<ul style="list-style-type: none"> - Whiteboard Double Monolithic Side A, Double Segmented Monolithic Fascia Side B, Top Double Glass Fascia - Whiteboard Double Monolithic Side A, Double Segmented Monolithic Fascia Side B, Top Single Glass Fascia - Whiteboard Double Monolithic Side A, Double Segmented With Base Fascia Side B, Top Double Glass Fascia - Whiteboard Double Monolithic Side A, Double Segmented With Base Fascia Side B, Top Single Glass Fascia - Whiteboard Double Monolithic Side A, Double Working Wall Monolithic Fascia Side B, Top Double Glass Fascia - Whiteboard Double Monolithic Side A, Double Working Wall Monolithic Fascia Side B, Top Single Glass Fascia - Whiteboard Double Monolithic Side A, Double Working Wall With Base Fascia Side B, Top Double Glass Fascia - Whiteboard Double Monolithic Side A, Double Working Wall With Base Fascia Side B, Top Single Glass Fascia
<p>Panel-Module-Teknion-Altos- Whiteboard_Double_With_Base (**)</p>	<ul style="list-style-type: none"> - Whiteboard Double With Base Fascia Side A, Double Full Fascia Side B - Whiteboard Double With Base Fascia Side A, Double Monolithic Fascia Side B - Whiteboard Double With Base Fascia Side A, Double Full With Base Fascia Side B - Whiteboard Double With Base Fascia Side A, Double Full With Ceiling Fascia Side B - Whiteboard Double With Base Fascia Side A, Double Segmented Fascia Side B - Whiteboard Double With Base Fascia Side A, Double Segmented Monolithic Fascia Side B - Whiteboard Double With Base Fascia Side A, Double Segmented With Base Fascia Side B - Whiteboard Double With Base Fascia Side A, Double Segmented With Ceiling Fascia Side B - Whiteboard Double With Base Fascia Side A, Double Working Wall Fascia Side B - Whiteboard Double With Base Fascia Side A, Double Working Wall Monolithic Fascia Side B - Whiteboard Double With Base Fascia Side A, Double Working Wall With Base Fascia Side B - Whiteboard Double With Base Fascia Side A, Double Working Wall With Ceiling Fascia Side B

Continues on next page

Family Name	Type Name
Panel-Module-Teknion-Altos- Whiteboard_Double_With_Base_&_Double_Whiteboard	<ul style="list-style-type: none"> - Whiteboard Double With Base Side A, Whiteboard Double With Ceiling and Base Side B - Whiteboard Double With Base Side A, Whiteboard Double Monolithic Side B - Whiteboard Double With Base Side A, Whiteboard Double With Base Side B - Whiteboard Double With Base Side A, Whiteboard Double With Ceiling Side B
Panel-Module-Teknion-Altos- Whiteboard_Double_With_Base_&_Double_Whiteboard_Top_Glass_Fascia	<ul style="list-style-type: none"> - Whiteboard Double With Base Side A, Whiteboard Double Monolithic Side B, Top Double Glass Fascia - Whiteboard Double With Base Side A, Whiteboard Double Monolithic Side B, Top Single Glass Fascia - Whiteboard Double With Base Side A, Whiteboard Double With Base Side B, Top Double Glass Fascia - Whiteboard Double With Base Side A, Whiteboard Double With Base Side B, Top Single Glass Fascia
Panel-Module-Teknion-Altos- Whiteboard_Double_With_Base_Top_Glass_Fascia	<ul style="list-style-type: none"> - Whiteboard Double With Base Fascia Side A, Double Segmented Monolithic Fascia Side B, Top Double Glass Fascia - Whiteboard Double With Base Fascia Side A, Double Segmented Monolithic Fascia Side B, Top Single Glass Fascia - Whiteboard Double With Base Fascia Side A, Double Segmented With Base Fascia Side B, Top Double Glass Fascia - Whiteboard Double With Base Fascia Side A, Double Segmented With Base Fascia Side B, Top Single Glass Fascia - Whiteboard Double With Base Fascia Side A, Double Working Wall Monolithic Fascia Side B, Top Double Glass Fascia - Whiteboard Double With Base Fascia Side A, Double Working Wall Monolithic Fascia Side B, Top Single Glass Fascia - Whiteboard Double With Base Fascia Side A, Double Working Wall With Base Fascia Side B, Top Double Glass Fascia - Whiteboard Double With Base Fascia Side A, Double Working Wall With Base Fascia Side B, Top Single Glass Fascia

Continues on next page

Family Name	Type Name
<p>Panel-Module-Teknion-Altos- Whiteboard_Double_With_Ceiling (**)</p>	<ul style="list-style-type: none"> - Whiteboard Double With Ceiling Fascia Side A, Double Full Fascia Side B - Whiteboard Double With Ceiling Fascia Side A, Double Full Monolithic Fascia Side B - Whiteboard Double With Ceiling Fascia Side A, Double Full With Base Fascia Side B - Whiteboard Double With Ceiling Fascia Side A, Double Full With Ceiling Fascia Side B - Whiteboard Double With Ceiling Fascia Side A, Double Segmented Fascia Side B - Whiteboard Double With Ceiling Fascia Side A, Double Segmented Monolithic Fascia Side B - Whiteboard Double With Ceiling Fascia Side A, Double Segmented With Base Fascia Side B - Whiteboard Double With Ceiling Fascia Side A, Double Segmented With Ceiling Fascia Side B - Whiteboard Double With Ceiling Fascia Side A, Double Working Wall Fascia Side B - Whiteboard Double With Ceiling Fascia Side A, Double Working Wall Monolithic Fascia Side B - Whiteboard Double With Ceiling Fascia Side A, Double Working Wall With Base Fascia Side B - Whiteboard Double With Ceiling Fascia Side A, Double Working Wall With Ceiling Fascia Side B
<p>Panel-Module-Teknion-Altos- Whiteboard_Double_With_Ceiling_&_Double_Whiteboard</p>	<ul style="list-style-type: none"> - Whiteboard Double With Ceiling Side A, Whiteboard Double With Ceiling and Base Side B - Whiteboard Double With Ceiling Side A, Whiteboard Double Monolithic Side B - Whiteboard Double With Ceiling Side A, Whiteboard Double With Base Side B - Whiteboard Double With Ceiling Side A, Whiteboard Double With Ceiling Side B
<p>Panel-Module-Teknion-Altos- Whiteboard_Double_With_Ceiling_&_Double_Whiteboard_Top_Glass_Fascia</p>	<ul style="list-style-type: none"> - Whiteboard Double With Ceiling Side A, Whiteboard Double With Ceiling and Base Side B, Top Double Glass Fascia - Whiteboard Double With Ceiling Side A, Whiteboard Double With Ceiling and Base Side B, Top Single Glass Fascia - Whiteboard Double With Ceiling Side A, Whiteboard Double With Ceiling Side B, Top Double Glass Fascia - Whiteboard Double With Ceiling Side A, Whiteboard Double With Ceiling Side B, Top Single Glass Fascia

Continues on next page

Family Name	Type Name
Panel-Module-Teknion-Altos- Whiteboard_Double_With_Ceiling_and_Base (**)	<ul style="list-style-type: none"> - Whiteboard Double With Ceiling and Base Side A, Double Full Fascia Side B - Whiteboard Double With Ceiling and Base Side A, Double Monolithic Fascia Side B - Whiteboard Double With Ceiling and Base Side A, Double Full With Base Fascia Side B - Whiteboard Double With Ceiling and Base Side A, Double Full With Ceiling Fascia Side B - Whiteboard Double With Ceiling and Base Side A, Double Segmented Fascia Side B - Whiteboard Double With Ceiling and Base Side A, Double Segmented Monolithic Fascia Side B - Whiteboard Double With Ceiling and Base Side A, Double Segmented With Base Fascia Side B - Whiteboard Double With Ceiling and Base Side A, Double Segmented With Ceiling Fascia Side B - Whiteboard Double With Ceiling and Base Side A, Double Working Wall Fascia Side B - Whiteboard Double With Ceiling and Base Side A, Double Working Wall Monolithic Fascia Side B - Whiteboard Double With Ceiling and Base Side A, Double Working Wall With Base Fascia Side B - Whiteboard Double With Ceiling and Base Side A, Double Working Wall With Ceiling Fascia Side B
Panel-Module-Teknion-Altos- Whiteboard_Double_With_Ceiling_and_Base_ &_Double_Whiteboard	<ul style="list-style-type: none"> - Whiteboard Double With Ceiling and Base Side A, Whiteboard Double With Ceiling and Base Side B - Whiteboard Double With Ceiling and Base Side A, Whiteboard Double Monolithic Side B - Whiteboard Double With Ceiling and Base Side A, Whiteboard Double With Base Side B - Whiteboard Double With Ceiling and Base Side A, Whiteboard Double With Ceiling Side B
Panel-Module-Teknion-Altos- Whiteboard_Double_With_Ceiling_and_Base_ &_Double_Whiteboard_Top_Glass_Fascia	<ul style="list-style-type: none"> - Whiteboard Double With Ceiling and Base Side A, Whiteboard Double With Ceiling and Base Side B, Top Double Glass Fascia - Whiteboard Double With Ceiling and Base Side A, Whiteboard Double With Ceiling and Base Side B, Top Single Glass Fascia - Whiteboard Double With Ceiling and Base Side A, Whiteboard Double With Ceiling Side B, Top Double Glass Fascia - Whiteboard Double With Ceiling and Base Side A, Whiteboard Double With Ceiling Side B, Top Single Glass Fascia

Continues on next page

Family Name	Type Name
<p>Panel-Module-Teknion-Altos- Whiteboard_Double_With_Ceiling_and_Base_ Top_Glass_Fascia</p>	<ul style="list-style-type: none"> - Whiteboard Double With Ceiling and Base Side A, Double Segmented Fascia Side B, Top Double Glass Fascia - Whiteboard Double With Ceiling and Base Side A, Double Segmented Fascia Side B, Top Single Glass Fascia - Whiteboard Double With Ceiling and Base Side A, Double Segmented With Ceiling Fascia Side B, Top Double Glass Fascia - Whiteboard Double With Ceiling and Base Side A, Double Segmented With Ceiling Fascia Side B, Top Single Glass Fascia - Whiteboard Double With Ceiling and Base Side A, Double Working Wall Fascia Side B, Top Double Glass Fascia - Whiteboard Double With Ceiling and Base Side A, Double Working Wall Fascia Side B, Top Single Glass Fascia - Whiteboard Double With Ceiling and Base Side A, Double Working Wall With Ceiling Fascia Side B, Top Double Glass Fascia - Whiteboard Double With Ceiling and Base Side A, Double Working Wall With Ceiling Fascia Side B, Top Single Glass Fascia
<p>Panel-Module-Teknion-Altos- Whiteboard_Double_With_Ceiling_Top_Glass_ Fascia</p>	<ul style="list-style-type: none"> - Whiteboard Double With Ceiling Fascia Side A, Double Segmented Fascia Side B, Top Double Glass Fascia - Whiteboard Double With Ceiling Fascia Side A, Double Segmented Fascia Side B, Top Single Glass Fascia - Whiteboard Double With Ceiling Fascia Side A, Double Segmented With Ceiling Fascia Side B, Top Double Glass Panel - Whiteboard Double With Ceiling Fascia Side A, Double Segmented With Ceiling Fascia Side B, Top Single Glass Panel - Whiteboard Double With Ceiling Fascia Side A, Double Working Wall Fascia Side B, Top Double Glass Fascia - Whiteboard Double With Ceiling Fascia Side A, Double Working Wall Fascia Side B, Top Single Glass Fascia - Whiteboard Double With Ceiling Fascia Side A, Double Working Wall With Ceiling Fascia Side B, Top Double Glass Fascia - Whiteboard Double With Ceiling Fascia Side A, Double Working Wall With Ceiling Fascia Side B, Top Single Glass Fascia
<p>Panel-Module-Teknion-Altos-With_Base</p>	<ul style="list-style-type: none"> - Full With Base Fascia Side A, Full With Base Fascia Side B - Full With Base Fascia Side A, Segmented With Base Fascia Side B - Full With Base Fascia Side A, Working Wall With Base Fascia Side B - Segmented With Base Fascia Side A, Segmented With Base Fascia Side B - Segmented With Base Fascia Side A, Working Wall With Base Fascia Side B - Working Wall With Base Fascia Side A, Working Wall With Base Fascia Side B

Family Name	Type Name
Panel-Module-Teknion-Altos- With_Base_&_With_Ceiling_and_Base	<ul style="list-style-type: none"> - Full With Base Fascia Side A, Full Fascia Side B - Full With Base Fascia Side A, Segmented Fascia Side B - Full With Base Fascia Side A, Working Wall Fascia Side B - Segmented With Base Fascia Side A, Full Fascia Side B - Segmented With Base Fascia Side A, Segmented Fascia Side B - Segmented With Base Fascia Side A, Working Wall Fascia Side B - Working Wall With Base Fascia Side A, Full Fascia Side B - Working Wall With Base Fascia Side A, Segmented Fascia Side B - Working Wall With Base Fascia Side A, Working Wall Fascia Side B
Panel-Module-Teknion-Altos- With_Base_Fascia_And_Clerestory	<ul style="list-style-type: none"> - Segmented With Base And Clerestory Side A, Segmented With Base And Clerestory Side B - Segmented With Base And Clerestory Side A, Working Wall With Base And Clerestory Side B - Working Wall With Base And Clerestory Side A, Working Wall With Base And Clerestory Side B
Panel-Module-Teknion-Altos- With_Base_Top_Glass_Fascia	<ul style="list-style-type: none"> - Segmented With Base Fascia Side A, Segmented With Base Fascia Side B, Top Double Glass Fascia - Segmented With Base Fascia Side A, Segmented With Base Fascia Side B, Top Single Glass Fascia - Segmented With Base Fascia Side A, Working Wall With Base Fascia Side B, Top Double Glass Fascia - Segmented With Base Fascia Side A, Working Wall With Base Fascia Side B, Top Single Glass Fascia - Working Wall With Base Fascia Side A, Working Wall With Base Fascia Side B, Top Double Glass Fascia - Working Wall With Base Fascia Side A, Working Wall With Base Fascia Side B, Top Single Glass Fascia
Panel-Module-Teknion-Altos-With_Ceiling	<ul style="list-style-type: none"> - Full With Ceiling Fascia Side A, Full With Ceiling Fascia Side B - Full With Ceiling Fascia Side A, Segmented With Ceiling Fascia Side B - Full With Ceiling Fascia Side A, Working Wall With Ceiling Fascia Side B - Segmented With Ceiling Fascia Side A, Segmented With Ceiling Fascia Side B - Segmented With Ceiling Fascia Side A, Working Wall With Ceiling Fascia Side B - Working Wall With Ceiling Fascia Side A, Working Wall With Ceiling Fascia Side B

Continues on next page

Family Name	Type Name
Panel-Module-Teknion-Altos- With_Ceiling_&_With_Base	<ul style="list-style-type: none"> - Full With Ceiling Fascia Side A, Full With Base Fascia Side B - Full With Ceiling Fascia Side A, Segmented With Base Fascia Side B - Full With Ceiling Fascia Side A, Working Wall With Base Fascia Side B - Segmented With Ceiling Fascia Side A, Full With Base Fascia Side B - Segmented With Ceiling Fascia Side A, Segmented With Base Fascia Side B - Segmented With Ceiling Fascia Side A, Working Wall With Base Fascia Side B - Working Wall With Ceiling Fascia Side A, Full With Base Fascia Side B - Working Wall With Ceiling Fascia Side A, Segmented With Base Fascia Side B - Working Wall With Ceiling Fascia Side A, Working Wall With Base Fascia Side B
Panel-Module-Teknion-Altos- With_Ceiling_&_With_Ceiling_and_Base	<ul style="list-style-type: none"> - Full With Ceiling Fascia Side A, Full Fascia Side B - Full With Ceiling Fascia Side A, Segmented Fascia Side B - Full With Ceiling Fascia Side A, Working Wall Fascia Side B - Segmented With Ceiling Fascia Side A, Full Fascia Side B - Segmented With Ceiling Fascia Side A, Segmented Fascia Side B - Segmented With Ceiling Fascia Side A, Working Wall Fascia Side B - Working Wall With Ceiling Fascia Side A, Full Fascia Side B - Working Wall With Ceiling Fascia Side A, Segmented Fascia Side B - Working Wall With Ceiling Fascia Side A, Working Wall Fascia Side B
Panel-Module-Teknion-Altos- With_Ceiling_and_Base (*)	<ul style="list-style-type: none"> - Full Fascia Side A, Full Fascia Side B - Full Fascia Side A, Segmented Fascia Side B - Full Fascia Side A, Working Wall Fascia Side B - Segmented Fascia Side A, Segmented Fascia Side B - Segmented Fascia Side A, Working Wall Fascia Side B - Working Wall Fascia Side A, Working Wall Fascia Side B

Continues on next page

Family Name	Type Name
<p>Panel-Module-Teknion-Altos- With_Ceiling_and_Base_Top_Glass_Fascia</p>	<ul style="list-style-type: none"> - Segmented Fascia Side A, Segmented Fascia Side B, Top Double Glass Fascia - Segmented Fascia Side A, Segmented Fascia Side B, Top Single Glass Fascia - Working Wall Fascia Side A, Segmented Fascia Side B, Top Double Glass Fascia - Working Wall Fascia Side A, Segmented Fascia Side B, Top Single Glass Fascia - Working Wall Fascia Side A, Working Wall Fascia Side B, Top Double Glass Fascia - Working Wall Fascia Side A, Working Wall Fascia Side B, Top Single Glass Fascia
<p>Panel-Module-Teknion-Altos- With_Ceiling_Top_Glass_Fascia</p>	<ul style="list-style-type: none"> - Segmented With Ceiling Fascia Side A, Segmented With Ceiling Fascia Side B, Top Double Glass Fascia - Segmented With Ceiling Fascia Side A, Segmented With Ceiling Fascia Side B, Top Single Glass Fascia - Segmented With Ceiling Fascia Side A, Working Wall With Ceiling Fascia Side B, Top Double Glass Fascia - Segmented With Ceiling Fascia Side A, Working Wall With Ceiling Fascia Side B, Top Single Glass Fascia - Working Wall With Ceiling Fascia Side A, Working Wall With Ceiling Fascia Side B, Top Double Glass Fascia - Working Wall With Ceiling Fascia Side A, Working Wall With Ceiling Fascia Side B, Top Single Glass Fascia

Continues on next page

Family Name	Type Name
TekPier_Panel-Double_TKP1_Module-Teknion-Altos-Monolithic	<ul style="list-style-type: none"> - TekPier Full Monolithic Side A, TekPier Segmented Monolithic Fascia Side B - TekPier Full Monolithic Side A, TekPier Full Monolithic Side B - TekPier Segmented Monolithic Fascia Side A, TekPier Segmented Monolithic Fascia Side B
TekPier_Panel-Double_TKP1_Module-Teknion-Altos-With_Ceiling_and_Base	<ul style="list-style-type: none"> - TekPier Full Fascia Side A, TekPier Segmented Fascia Side B - TekPier Full Fascia Side A, TekPier Full Fascia Side B - TekPier Segmented Fascia Side A, TekPier Segmented Fascia Side B
TekPier_Panel-Double_TKP2_Module-Teknion-Altos-Monolithic	<ul style="list-style-type: none"> - TekPier Full Monolithic Side A, TekPier Full Monolithic Side B - TekPier Full Monolithic Side A, TekPier Full Monolithic Side B - TekPier Segmented Monolithic Fascia Side A, TekPier Segmented Monolithic Fascia Side B
TekPier_Panel-Double_TKP2_Module-Teknion-Altos-With_Ceiling_and_Base	<ul style="list-style-type: none"> - TekPier Full Fascia Side A, TekPier Segmented Fascia Side B - TekPier Full Fascia Side A, TekPier Full Fascia Side B - TekPier Segmented Fascia Side A, TekPier Segmented Fascia Side B
TekPier_Panel-Single_TKP1_Module-Teknion-Altos-Monolithic	<ul style="list-style-type: none"> - TekPier Full Monolithic Side A, Segmented Monolithic Fascia Side B - TekPier Full Monolithic Side A, Full Monolithic Side B - TekPier Segmented Monolithic Fascia Side A, Segmented Monolithic Fascia Side B - TekPier Full Monolithic Side A, Working Wall Monolithic Fascia B - TekPier Segmented Monolithic Fascia Side A, Working Wall Monolithic Fascia - TekPier Segmented Monolithic Side A, Full Monolithic Side B
TekPier_Panel-Single_TKP1_Module-Teknion-Altos-TekPier_Monolithic_&_With_Ceiling_and_Base	<ul style="list-style-type: none"> - TekPier Full Monolithic Fascia Side A, Working Wall Fascia Side B - TekPier Full Monolithic Fascia Side A, Full Fascia Side B - TekPier Segmented Monolithic Fascia Side A, Segmented Fascia Side B - TekPier Full Monolithic Side A, Segmented Fascia Side B - TekPier Segmented Monolithic Fascia Side A, Full Fascia Side B - TekPier Segmented Monolithic Fascia Side A, Working Wall Fascia Side B

Continues on next page

Family Name	Type Name
TekPier_Panel-Single_TKP1_Module-Teknion-Altos-TekPier_With_Ceiling_and_Base_&_Monolithic	<ul style="list-style-type: none"> - TekPier Full Fascia Side A, Segmented Monolithic Fascia Side B - TekPier Full Fascia Side A, Full Monolithic Side B - TekPier Segmented Fascia Side A, Segmented Monolithic Fascia Side B - TekPier Full Fascia Side A, Working Wall Monolithic Fascia B - TekPier Segmented Fascia Side A, Full Monolithic Fascia Side B - TekPier Segmented Fascia Side A, Working Wall Monolithic Fascia
TekPier_Panel-Single_TKP1_Module-Teknion-Altos-With_Ceiling_and_Base	<ul style="list-style-type: none"> - TekPier Full Fascia Side A, Segmented Fascia Side B - TekPier Full Fascia Side A, Full Fascia Side B - TekPier Segmented Fascia Side A, Segmented Fascia Side B - TekPier Full Fascia Side A, Working Wall Fascia Side B - TekPier Segmented Fascia Side A, Full Fascia Side B - TekPier Segmented Fascia Side A, Working Wall Fascia Side B
TekPier_Panel-Single_TKP2_Module-Teknion-Altos-Monolithic	<ul style="list-style-type: none"> - TekPier Full Monolithic Side A, Segmented Monolithic Fascia Side B - TekPier Full Monolithic Side A, Full Monolithic Side B - TekPier Segmented Monolithic Fascia Side A, Segmented Monolithic Fascia Side B - TekPier Full Monolithic Side A, Working Wall Monolithic Fascia B - TekPier Segmented Monolithic Fascia Side A, Working Wall Monolithic Fascia - TekPier Segmented Monolithic Side A, Full Monolithic Side B
TekPier_Panel-Single_TKP2_Module-Teknion-Altos-TekPier_Monolithic_&_With_Ceiling_and_Base	<ul style="list-style-type: none"> - TekPier Full Monolithic Fascia Side A, Working Wall Fascia Side B - TekPier Full Monolithic Fascia Side A, Full Fascia Side B - TekPier Segmented Monolithic Fascia Side A, Segmented Fascia Side B - TekPier Full Monolithic Side A, Segmented Fascia Side B - TekPier Segmented Monolithic Fascia Side A, Full Fascia Side B - TekPier Segmented Monolithic Fascia Side A, Working Wall Fascia Side B
TekPier_Panel-Single_TKP2_Module-Teknion-Altos-TekPier_With_Ceiling_and_Base_&_Monolithic	<ul style="list-style-type: none"> - TekPier Full Fascia Side A, Segmented Monolithic Fascia Side B - TekPier Full Fascia Side A, Full Monolithic Side B - TekPier Segmented Fascia Side A, Segmented Monolithic Fascia Side B - TekPier Full Fascia Side A, Working Wall Monolithic Fascia B - TekPier Segmented Fascia Side A, Full Monolithic Fascia Side B - TekPier Segmented Fascia Side A, Working Wall Monolithic Fascia

Continues on next page

Family Name	Type Name
TekPier_Panel-Single_TKP2_Module-Teknion-Altos-With_Ceiling_and_Base	<div>- TekPier Full Fascia Side A, Segmented Fascia Side B</div> <div>- TekPier Full Fascia Side A, Full Fascia Side B</div> <div>- TekPier Segmented Fascia Side A, Segmented Fascia Side B</div> <div>- TekPier Full Fascia Side A, Working Wall Fascia Side B</div> <div>- TekPier Segmented Fascia Side A, Full Fascia Side B</div> <div>- TekPier Segmented Fascia Side A, Working Wall Fascia Side B</div>

Continues on next page

Family Name	Type Name
TekPier_Panel-Single_TKP1_Module-Teknion-Altos-Whiteboard_Double_Monolithic_&_TekPier_Monolithic	- Whiteboard Double Monolithic Side A, Full Fascia & TekPier Monolithic Fascia Side B
	- Whiteboard Double Monolithic Side A, Full Fascia & TekPier Segmented Monolithic Fascia Side B
	- Whiteboard Double Monolithic Side A, Full With Base Fascia & TekPier Monolithic Fascia Side B
	- Whiteboard Double Monolithic Side A, Full With Base Fascia & TekPier Segmented Monolithic Fascia Side B
	- Whiteboard Double Monolithic Side A, Full With Ceiling Fascia & TekPier Monolithic Side B
	- Whiteboard Double Monolithic Side A, Full With Ceiling Fascia & TekPier Segmented Monolithic Side B
	- Whiteboard Double Monolithic Side A, Monolithic Fascia & TekPier Monolithic Fascia Side B
	- Whiteboard Double Monolithic Side A, Monolithic Fascia & TekPier Segmented Monolithic Side B
	- Whiteboard Double Monolithic Side A, Segmented Fascia & TekPier Monolithic Fascia Side B
	- Whiteboard Double Monolithic Side A, Segmented Fascia & TekPier Segmented Monolithic Fascia Side B
	- Whiteboard Double Monolithic Side A, Segmented Monolithic Fascia & TekPier Monolithic Fascia Side B
	- Whiteboard Double Monolithic Side A, Segmented Monolithic Fascia & TekPier Segmented Monolithic Fascia Side B
	- Whiteboard Double Monolithic Side A, Segmented With Base Fascia & TekPier Monolithic Fascia Side B
	- Whiteboard Double Monolithic Side A, Segmented With Base Fascia & TekPier Segmented Monolithic Fascia Side B
	- Whiteboard Double Monolithic Side A, Segmented With Ceiling Fascia & TekPier Monolithic Side B
	- Whiteboard Double Monolithic Side A, Segmented With Ceiling Fascia & TekPier Segmented Monolithic Side B
	- Whiteboard Double Monolithic Side A, Working Wall Fascia & TekPier Monolithic Fascia Side B
	- Whiteboard Double Monolithic Side A, Working Wall Fascia & TekPier Segmented Monolithic Fascia Side B
	- Whiteboard Double Monolithic Side A, Working Wall Monolithic Fascia & TekPier Monolithic Fascia Side B
	- Whiteboard Double Monolithic Side A, Working Wall Monolithic Fascia & TekPier Segmented Monolithic Side B
	- Whiteboard Double Monolithic Side A, Working Wall With Base Fascia & TekPier Monolithic Fascia Side B
	- Whiteboard Double Monolithic Side A, Working Wall With Base Fascia & TekPier Segmented Monolithic Fascia Side B
	- Whiteboard Double Monolithic Side A, Working Wall With Ceiling Fascia & TekPier Monolithic Side B
	- Whiteboard Double Monolithic Side A, Working Wall With Ceiling Fascia & TekPier Segmented Monolithic Side B

Continues on next page

Family Name	Type Name
TekPier_Panel-Single_TKP2_Module-Teknion-Altos-Whiteboard_Double_Monolithic_&_TekPier_Monolithic	<ul style="list-style-type: none"> - Whiteboard Double Monolithic Side A, Full Fascia & TekPier Monolithic Fascia Side B - Whiteboard Double Monolithic Side A, Full Fascia & TekPier Segmented Monolithic Fascia Side B - Whiteboard Double Monolithic Side A, Full With Base Fascia & TekPier Monolithic Fascia Side B - Whiteboard Double Monolithic Side A, Full With Base Fascia & TekPier Segmented Monolithic Fascia Side B - Whiteboard Double Monolithic Side A, Full With Ceiling Fascia & TekPier Monolithic Side B - Whiteboard Double Monolithic Side A, Full With Ceiling Fascia & TekPier Segmented Monolithic Side B - Whiteboard Double Monolithic Side A, Monolithic Fascia & TekPier Monolithic Fascia Side B - Whiteboard Double Monolithic Side A, Monolithic Fascia & TekPier Segmented Monolithic Side B - Whiteboard Double Monolithic Side A, Segmented Fascia & TekPier Monolithic Fascia Side B - Whiteboard Double Monolithic Side A, Segmented Fascia & TekPier Segmented Monolithic Fascia Side B - Whiteboard Double Monolithic Side A, Segmented Monolithic Fascia & TekPier Monolithic Fascia Side B - Whiteboard Double Monolithic Side A, Segmented Monolithic Fascia & TekPier Segmented Monolithic Fascia Side B - Whiteboard Double Monolithic Side A, Segmented With Base Fascia & TekPier Monolithic Fascia Side B - Whiteboard Double Monolithic Side A, Segmented With Base Fascia & TekPier Segmented Monolithic Fascia Side B - Whiteboard Double Monolithic Side A, Segmented With Ceiling Fascia & TekPier Monolithic Side B - Whiteboard Double Monolithic Side A, Segmented With Ceiling Fascia & TekPier Segmented Monolithic Side B - Whiteboard Double Monolithic Side A, Working Wall Fascia & TekPier Monolithic Fascia Side B - Whiteboard Double Monolithic Side A, Working Wall Fascia & TekPier Segmented Monolithic Fascia Side B - Whiteboard Double Monolithic Side A, Working Wall Monolithic Fascia & TekPier Monolithic Fascia Side B - Whiteboard Double Monolithic Side A, Working Wall Monolithic Fascia & TekPier Segmented Monolithic Side B - Whiteboard Double Monolithic Side A, Working Wall With Base Fascia & TekPier Monolithic Fascia Side B - Whiteboard Double Monolithic Side A, Working Wall With Base Fascia & TekPier Segmented Monolithic Fascia Side B - Whiteboard Double Monolithic Side A, Working Wall With Ceiling Fascia & TekPier Monolithic Side B - Whiteboard Double Monolithic Side A, Working Wall With Ceiling Fascia & TekPier Segmented Monolithic Side B

Continues on next page

Family Name	Type Name
TekPier_Panel-Single_TKP1_Module-Teknion-Altos-Whiteboard_Double_Monolithic_&_TekPier_With_Ceiling_and_Base	<ul style="list-style-type: none"> - Whiteboard Double Monolithic Side A, Full Fascia & TekPier Full Fascia Side B - Whiteboard Double Monolithic Side A, Full Fascia & TekPier Segmented Fascia Side B - Whiteboard Double Monolithic Side A, Full With Base Fascia & TekPier Full Fascia Side B - Whiteboard Double Monolithic Side A, Full With Base Fascia & TekPier Segmented Fascia Side B - Whiteboard Double Monolithic Side A, Full With Ceiling Fascia & TekPier Full Side B - Whiteboard Double Monolithic Side A, Full With Ceiling Fascia & TekPier Segmented Side B - Whiteboard Double Monolithic Side A, Monolithic Fascia & TekPier Full Fascia Side B - Whiteboard Double Monolithic Side A, Monolithic Fascia & TekPier Segmented Side B - Whiteboard Double Monolithic Side A, Segmented Fascia & TekPier Full Fascia Side B - Whiteboard Double Monolithic Side A, Segmented Fascia & TekPier Segmented Fascia Side B - Whiteboard Double Monolithic Side A, Segmented Monolithic Fascia & TekPier Full Fascia Side B - Whiteboard Double Monolithic Side A, Segmented Monolithic Fascia & TekPier Segmented Fascia Side B - Whiteboard Double Monolithic Side A, Segmented With Base Fascia & TekPier Full Fascia Side B - Whiteboard Double Monolithic Side A, Segmented With Base Fascia & TekPier Segmented Fascia Side B - Whiteboard Double Monolithic Side A, Segmented With Ceiling Fascia & TekPier Full Side B - Whiteboard Double Monolithic Side A, Segmented With Ceiling Fascia & TekPier Segmented Side B - Whiteboard Double Monolithic Side A, Working Wall Fascia & TekPier Full Fascia Side B - Whiteboard Double Monolithic Side A, Working Wall Fascia & TekPier Segmented Fascia Side B - Whiteboard Double Monolithic Side A, Working Wall Monolithic Fascia & TekPier Full Fascia Side B - Whiteboard Double Monolithic Side A, Working Wall Monolithic Fascia & TekPier Segmented Side B - Whiteboard Double Monolithic Side A, Working Wall With Base Fascia & TekPier Full Fascia Side B - Whiteboard Double Monolithic Side A, Working Wall With Base Fascia & TekPier Segmented Fascia Side B - Whiteboard Double Monolithic Side A, Working Wall With Ceiling Fascia & TekPier Full Side B - Whiteboard Double Monolithic Side A, Working Wall With Ceiling Fascia & TekPier Segmented Side B

Continues on next page

Family Name	Type Name
TekPier_Panel-Single_TKP2_Module-Teknion-Altos-Whiteboard_Double_Monolithic_&_TekPier_With_Ceiling_and_Base	- Whiteboard Double Monolithic Side A, Full Fascia & TekPier Full Fascia Side B
	- Whiteboard Double Monolithic Side A, Full Fascia & TekPier Segmented Fascia Side B
	- Whiteboard Double Monolithic Side A, Full With Base Fascia & TekPier Full Fascia Side B
	- Whiteboard Double Monolithic Side A, Full With Base Fascia & TekPier Segmented Fascia Side B
	- Whiteboard Double Monolithic Side A, Full With Ceiling Fascia & TekPier Full Side B
	- Whiteboard Double Monolithic Side A, Full With Ceiling Fascia & TekPier Segmented Side B
	- Whiteboard Double Monolithic Side A, Monolithic Fascia & TekPier Full Fascia Side B
	- Whiteboard Double Monolithic Side A, Monolithic Fascia & TekPier Segmented Side B
	- Whiteboard Double Monolithic Side A, Segmented Fascia & TekPier Full Fascia Side B
	- Whiteboard Double Monolithic Side A, Segmented Fascia & TekPier Segmented Fascia Side B
	- Whiteboard Double Monolithic Side A, Segmented Monolithic Fascia & TekPier Full Fascia Side B
	- Whiteboard Double Monolithic Side A, Segmented Monolithic Fascia & TekPier Segmented Fascia Side B
	- Whiteboard Double Monolithic Side A, Segmented With Base Fascia & TekPier Full Fascia Side B
	- Whiteboard Double Monolithic Side A, Segmented With Base Fascia & TekPier Segmented Fascia Side B
	- Whiteboard Double Monolithic Side A, Segmented With Ceiling Fascia & TekPier Full Side B
	- Whiteboard Double Monolithic Side A, Segmented With Ceiling Fascia & TekPier Segmented Side B
	- Whiteboard Double Monolithic Side A, Working Wall Fascia & TekPier Full Fascia Side B
	- Whiteboard Double Monolithic Side A, Working Wall Fascia & TekPier Segmented Fascia Side B
	- Whiteboard Double Monolithic Side A, Working Wall Monolithic Fascia & TekPier Full Fascia Side B
	- Whiteboard Double Monolithic Side A, Working Wall Monolithic Fascia & TekPier Segmented Side B
	- Whiteboard Double Monolithic Side A, Working Wall With Base Fascia & TekPier Full Fascia Side B
	- Whiteboard Double Monolithic Side A, Working Wall With Base Fascia & TekPier Segmented Fascia Side B
	- Whiteboard Double Monolithic Side A, Working Wall With Ceiling Fascia & TekPier Full Side B
	- Whiteboard Double Monolithic Side A, Working Wall With Ceiling Fascia & TekPier Segmented Side B

Continues on next page

Family Name	Type Name
TekPier_Panel-Single_TKP1_Module-Teknion-Altos-Whiteboard_Double_With_Ceiling_&_Base_&_TekPier_With_Ceiling_and_Base	- Whiteboard Double With Ceiling & Base Side A, Full Fascia & TekPier Full Fascia Side B
	- Whiteboard Double With Ceiling & Base Side A, Full Fascia & TekPier Segmented Fascia Side B
	- Whiteboard Double With Ceiling & Base Side A, Full With Base Fascia & TekPier Full Fascia Side B
	- Whiteboard Double With Ceiling & Base Side A, Full With Base Fascia & TekPier Segmented Fascia Side B
	- Whiteboard Double With Ceiling & Base Side A, Full With Ceiling Fascia & TekPier Full Side B
	- Whiteboard Double With Ceiling & Base Side A, Full With Ceiling Fascia & TekPier Segmented Side B
	- Whiteboard Double With Ceiling & Base Side A, Monolithic Fascia & TekPier Full Fascia Side B
	- Whiteboard Double With Ceiling & Base Side A, Monolithic Fascia & TekPier Segmented Side B
	- Whiteboard Double With Ceiling & Base Side A, Segmented Fascia & TekPier Full Fascia Side B
	- Whiteboard Double With Ceiling & Base Side A, Segmented Fascia & TekPier Segmented Fascia Side B
	- Whiteboard Double With Ceiling & Base Side A, Segmented Monolithic Fascia & TekPier Full Fascia Side B
	- Whiteboard Double With Ceiling & Base Side A, Segmented Monolithic Fascia & TekPier Segmented Fascia Side B
	- Whiteboard Double With Ceiling & Base Side A, Segmented With Base Fascia & TekPier Full Fascia Side B
	- Whiteboard Double With Ceiling & Base Side A, Segmented With Base Fascia & TekPier Segmented Fascia Side B
	- Whiteboard Double With Ceiling & Base Side A, Segmented With Ceiling Fascia & TekPier Full Side B
	- Whiteboard Double With Ceiling & Base Side A, Segmented With Ceiling Fascia & TekPier Segmented Side B
	- Whiteboard Double With Ceiling & Base Side A, Working Wall Fascia & TekPier Full Fascia Side B
	- Whiteboard Double With Ceiling & Base Side A, Working Wall Monolithic Fascia & TekPier Segmented Side B
	- Whiteboard Double With Ceiling & Base Side A, Working Wall With Base Fascia & TekPier Full Fascia Side B
	- Whiteboard Double With Ceiling & Base Side A, Working Wall With Base Fascia & TekPier Segmented Fascia Side B
	- Whiteboard Double With Ceiling & Base Side A, Working Wall With Ceiling Fascia & TekPier Full Side B
	- Whiteboard Double With Ceiling & Base Side A, Working Wall With Ceiling Fascia & TekPier Segmented Side B

Continues on next page

Family Name	Type Name
TekPier_Panel-Single_TKP2_Module-Teknion-Altos-Whiteboard_Double_With_Ceiling & Base_&_TekPier_With_Ceiling_and_Base	- Whiteboard Double With Ceiling & Base Side A, Full Fascia & TekPier Full Fascia Side B
	- Whiteboard Double With Ceiling & Base Side A, Full Fascia & TekPier Segmented Fascia Side B
	- Whiteboard Double With Ceiling & Base Side A, Full With Base Fascia & TekPier Full Fascia Side B
	- Whiteboard Double With Ceiling & Base Side A, Full With Base Fascia & TekPier Segmented Fascia Side B
	- Whiteboard Double With Ceiling & Base Side A, Full With Ceiling Fascia & TekPier Full Side B
	- Whiteboard Double With Ceiling & Base Side A, Full With Ceiling Fascia & TekPier Segmented Side B
	- Whiteboard Double With Ceiling & Base Side A, Monolithic Fascia & TekPier Full Fascia Side B
	- Whiteboard Double With Ceiling & Base Side A, Monolithic Fascia & TekPier Segmented Side B
	- Whiteboard Double With Ceiling & Base Side A, Segmented Fascia & TekPier Full Fascia Side B
	- Whiteboard Double With Ceiling & Base Side A, Segmented Fascia & TekPier Segmented Fascia Side B
	- Whiteboard Double With Ceiling & Base Side A, Segmented Monolithic Fascia & TekPier Full Fascia Side B
	- Whiteboard Double With Ceiling & Base Side A, Segmented Monolithic Fascia & TekPier Segmented Fascia Side B
	- Whiteboard Double With Ceiling & Base Side A, Segmented With Base Fascia & TekPier Full Fascia Side B
	- Whiteboard Double With Ceiling & Base Side A, Segmented With Base Fascia & TekPier Segmented Fascia Side B
	- Whiteboard Double With Ceiling & Base Side A, Segmented With Ceiling Fascia & TekPier Full Side B
	- Whiteboard Double With Ceiling & Base Side A, Segmented With Ceiling Fascia & TekPier Segmented Side B
	- Whiteboard Double With Ceiling & Base Side A, Working Wall Fascia & TekPier Full Fascia Side B
	- Whiteboard Double With Ceiling & Base Side A, Working Wall Monolithic Fascia & TekPier Segmented Side B
	- Whiteboard Double With Ceiling & Base Side A, Working Wall With Base Fascia & TekPier Full Fascia Side B
	- Whiteboard Double With Ceiling & Base Side A, Working Wall With Base Fascia & TekPier Segmented Fascia Side B
	- Whiteboard Double With Ceiling & Base Side A, Working Wall With Ceiling Fascia & TekPier Full Side B
	- Whiteboard Double With Ceiling & Base Side A, Working Wall With Ceiling Fascia & TekPier Segmented Side B

Continues on next page

Family Name	Type Name
TekPier_Panel-Single_TKP1_Module-Teknion-Altos-Whiteboard_Double_With Ceiling & Base_&_TekPier_Monolithic	- Whiteboard Double With Ceiling & Base Side A, Full Fascia & TekPier Monolithic Fascia Side B
	- Whiteboard Double With Ceiling & Base Side A, Full Fascia & TekPier Segmented Monolithic Fascia Side B
	- Whiteboard Double With Ceiling & Base Side A, Full With Base Fascia & TekPier Monolithic Fascia Side B
	- Whiteboard Double With Ceiling & Base Side A, Full With Base Fascia & TekPier Segmented Monolithic Fascia Side B
	- Whiteboard Double With Ceiling & Base Side A, Full With Ceiling Fascia & TekPier Monolithic Side B
	- Whiteboard Double With Ceiling & Base Side A, Full With Ceiling Fascia & TekPier Segmented Monolithic Side B
	- Whiteboard Double With Ceiling & Base Side A, Monolithic Fascia & TekPier Monolithic Fascia Side B
	- Whiteboard Double With Ceiling & Base Side A, Monolithic Fascia & TekPier Segmented Monolithic Side B
	- Whiteboard Double With Ceiling & Base Side A, Segmented Fascia & TekPier Monolithic Fascia Side B
	- Whiteboard Double With Ceiling & Base Side A, Segmented Fascia & TekPier Segmented Monolithic Fascia Side B
	- Whiteboard Double With Ceiling & Base Side A, Segmented Monolithic Fascia & TekPier Monolithic Fascia Side B
	- Whiteboard Double With Ceiling & Base Side A, Segmented Monolithic Fascia & TekPier Segmented Monolithic Fascia Side B
	- Whiteboard Double With Ceiling & Base Side A, Segmented With Base Fascia & TekPier Monolithic Fascia Side B
	- Whiteboard Double With Ceiling & Base Side A, Segmented With Base Fascia & TekPier Segmented Monolithic Fascia Side B
	- Whiteboard Double With Ceiling & Base Side A, Segmented With Ceiling Fascia & TekPier Monolithic Side B
	- Whiteboard Double With Ceiling & Base Side A, Segmented With Ceiling Fascia & TekPier Segmented Monolithic Side B
	- Whiteboard Double With Ceiling & Base Side A, Working Wall Fascia & TekPier Monolithic Fascia Side B
	- Whiteboard Double With Ceiling & Base Side A, Working Wall Monolithic Fascia & TekPier Segmented Monolithic Side B
	- Whiteboard Double With Ceiling & Base Side A, Working Wall With Base Fascia & TekPier Monolithic Fascia Side B
	- Whiteboard Double With Ceiling & Base Side A, Working Wall With Base Fascia & TekPier Segmented Monolithic Fascia Side B
	- Whiteboard Double With Ceiling & Base Side A, Working Wall With Ceiling Fascia & TekPier Monolithic Side B
	- Whiteboard Double With Ceiling & Base Side A, Working Wall With Ceiling Fascia & TekPier Segmented Monolithic Side B

Continues on next page

Family Name	Type Name
TekPier_Panel-Single_TKP2_Module-Teknion-Altos-Whiteboard_Double_With Ceiling & Base_&_TekPier_Monolithic	- Whiteboard Double With Ceiling & Base Side A, Full Fascia & TekPier Monolithic Fascia Side B
	- Whiteboard Double With Ceiling & Base Side A, Full Fascia & TekPier Segmented Monolithic Fascia Side B
	- Whiteboard Double With Ceiling & Base Side A, Full With Base Fascia & TekPier Monolithic Fascia Side B
	- Whiteboard Double With Ceiling & Base Side A, Full With Base Fascia & TekPier Segmented Monolithic Fascia Side B
	- Whiteboard Double With Ceiling & Base Side A, Full With Ceiling Fascia & TekPier Monolithic Side B
	- Whiteboard Double With Ceiling & Base Side A, Full With Ceiling Fascia & TekPier Segmented Monolithic Side B
	- Whiteboard Double With Ceiling & Base Side A, Monolithic Fascia & TekPier Monolithic Fascia Side B
	- Whiteboard Double With Ceiling & Base Side A, Monolithic Fascia & TekPier Segmented Monolithic Side B
	- Whiteboard Double With Ceiling & Base Side A, Segmented Fascia & TekPier Monolithic Fascia Side B
	- Whiteboard Double With Ceiling & Base Side A, Segmented Fascia & TekPier Segmented Monolithic Fascia Side B
	- Whiteboard Double With Ceiling & Base Side A, Segmented Monolithic Fascia & TekPier Monolithic Fascia Side B
	- Whiteboard Double With Ceiling & Base Side A, Segmented Monolithic Fascia & TekPier Segmented Monolithic Fascia Side B
	- Whiteboard Double With Ceiling & Base Side A, Segmented With Base Fascia & TekPier Monolithic Fascia Side B
	- Whiteboard Double With Ceiling & Base Side A, Segmented With Base Fascia & TekPier Segmented Monolithic Fascia Side B
	- Whiteboard Double With Ceiling & Base Side A, Segmented With Ceiling Fascia & TekPier Monolithic Side B
	- Whiteboard Double With Ceiling & Base Side A, Segmented With Ceiling Fascia & TekPier Segmented Monolithic Side B
	- Whiteboard Double With Ceiling & Base Side A, Working Wall Fascia & TekPier Monolithic Fascia Side B
	- Whiteboard Double With Ceiling & Base Side A, Working Wall Monolithic Fascia & TekPier Segmented Monolithic Side B
	- Whiteboard Double With Ceiling & Base Side A, Working Wall With Base Fascia & TekPier Monolithic Fascia Side B
	- Whiteboard Double With Ceiling & Base Side A, Working Wall With Base Fascia & TekPier Segmented Monolithic Fascia Side B
	- Whiteboard Double With Ceiling & Base Side A, Working Wall With Ceiling Fascia & TekPier Monolithic Side B
	- Whiteboard Double With Ceiling & Base Side A, Working Wall With Ceiling Fascia & TekPier Segmented Monolithic Side B

