

LUUM

# Starting Point

6 — 2016







# LUUM

—  
Our Philosophy

We believe that design is most successful when the creative process is paired with a clear performance intent. Whether it's a problem to be solved or an objective to be met, design is a forward-looking pursuit.



From fiber to finish, across upholstery and wallcoverings, we create products designed to work together seamlessly.

We’re always looking ahead and imagining the ways our collections will be used. It’s why we work by hand at the fiber level to understand—and ultimately influence—how our materials will perform in the built environment.

Throughout the design process, we focus on creating products that work together in a holistic way. This comprehensive approach allows us to provide architects and designers with a complete solution capable of wrapping every contour of the interior and unlocking the possibilities found within.





True to our name, many of our products first take shape on a handloom. It's the perfect tool for bringing rough ideas to life.

## **Introducing Luum: Collections designed to bring cohesion to any space.**









## Starting Point Collection

---

Starting Point is our inaugural collection for Luum. Created by Suzanne Tick, each product in the collection descends from a common origin story: pre-digital analog processes, particularly the art of handweaving. This influence is found throughout Starting Point, from the unique weave structure developed on our studio handloom for a solution-dyed nylon upholstery to the handwoven art piece that inspired our printed polyurethane.

Focusing on performance luxury, our upholstery includes two large-scale fabrics for use on collaborative seating as well as two smaller-scale performance patterns. Three vertical fabrics offer a range of textures for walls and panels, and two multipurpose fabrics feature long colorlines to coordinate with the other patterns. This allows for analogous palettes with varied shades, values and saturations for additional layering and visual texture. All fabrics meet or exceed heavy-duty contract requirements, including three bleach-cleanable patterns, and are highly durable, with three patterns at 100,000 double rubs.



**Collection:** Starting Point  
**Designer:** Suzanne Tick

**Use:** Upholstery

Inspired by analog processes, Point to Point reflects the unexpected imperfections introduced by mechanical and hand processes that counteract the overwhelmingly digital nature of the modern world.

# 1 — Point to Point

**Content:** 79% Recycled Polyester (Postconsumer) + 21% Nylon  
**Number of Colorways:** 7  
*(shown here, front to back):* Digitize, Install, Synchronize, Embedded, Voxel  
**Abrasion:** Wyzenbeek 100,000 Double Rubs  
**Special Characteristics:** Bleach Cleanable

Starting with digitally pixelated images, we emulate an analog process through layering. This creates a subtle large-scale geometric made up of various small-scale dot patterns, suitable for collaborative and lounge seating as well as smaller task chairs. Light and dark neutral base colors are paired with an accent color in a textural boucle yarn. In addition to 79% recycled content, Point to Point incorporates high-performance characteristics—both bleach cleanable and rated to 100,000 double rubs.





## 2 — Percept

Building upon the success of the panel fabric Rationale, we used the same yarn technology to create Percept, which has a heavier weight quality with an expanded texture and palette. Each yarn in this fabric is a combination of matte and luster finishes as well as light and dark tones. The thickness of the yarns allows the weave structure to create an elegant textural surface. We created Percept's long colorline to inspire the analogous color palettes of today's interiors. Nineteen rich colors range from light to bright to deep. Blue, green and red come in several variations, each to allow for cutting-edge combinations as one moves around the color wheel. The palette also includes warm and cool neutrals in light, medium and dark values to play with and against the color accents. Percept is a true multipurpose fabric designed for use as upholstery, panel and wrapped wall. It has 81% post-consumer recycled content and is rated to 75,000 double rubs.

**Use:** Upholstery/Wrapped Wall/Panel  
**Content:** 81% Recycled Polyester (Postconsumer) + 19% Polyester  
**Number of Colorways:** 19

*(shown here, left to right):* Verve, Ignite, Epiphany, Reason, Methodic, Intrinsic, Schema

**Abrasion:** Wyzenbeek 75,000 Double Rubs



2. Percept

## 3 — Soft Ridge

A midscale pattern for the wall with organic vertical striations, Soft Ridge beautifully hides imperfections in the wall surface. This direct glue wallcovering uses a new boucle twist yarn that softens the weave structure and adds dimensionality to the wall.

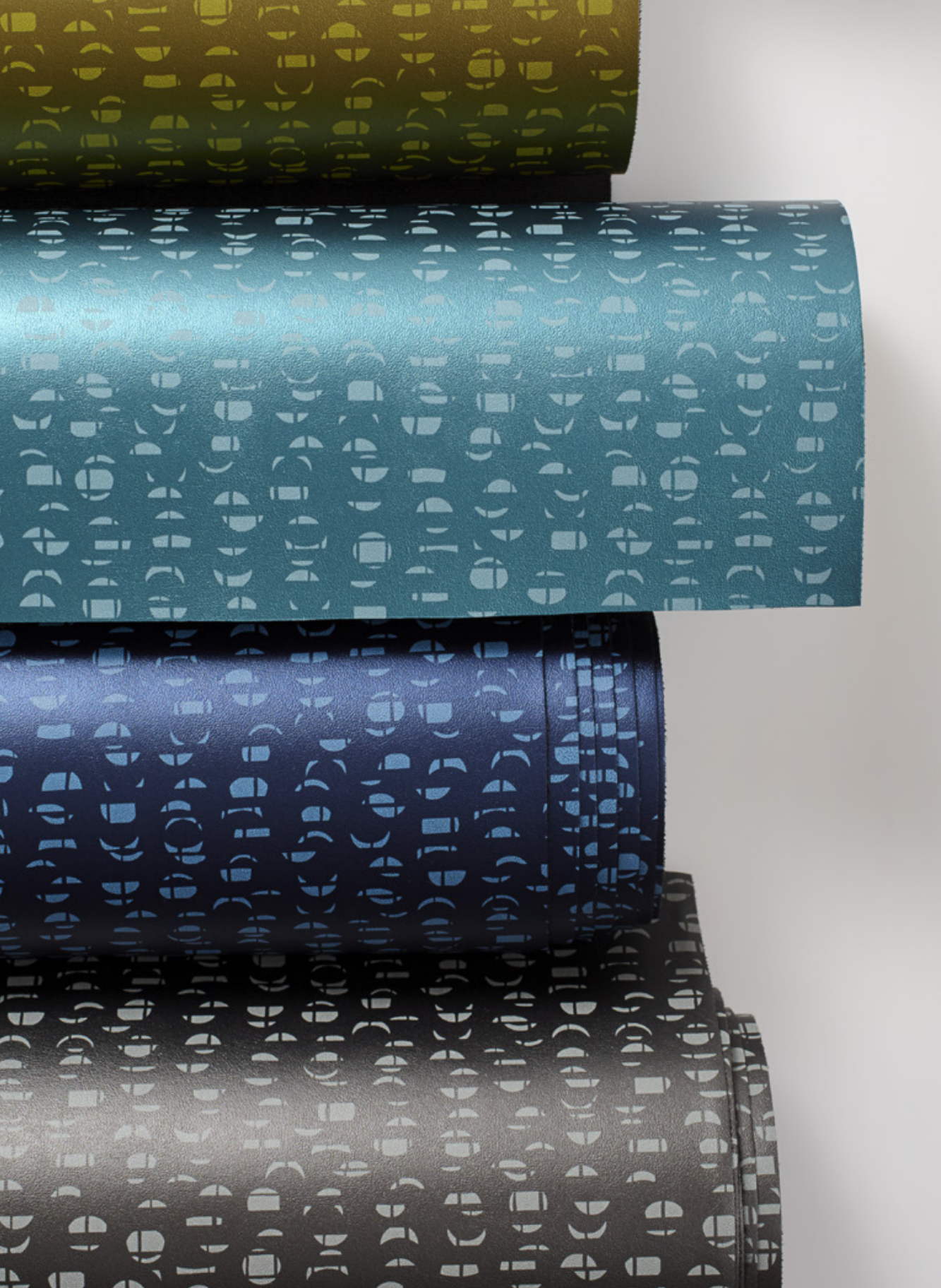
**Use:** Direct Glue Wall  
**Content:** 100% Polyester (Recycled content varies by color)  
**Number of Colorways:** 7

*(shown here, left to right):* Tumbled Marble, Pale Onyx, Raku, Brindle



3. Soft Ridge





**Collection:** Starting Point  
**Designer:** Suzanne Tick

**Use:** Upholstery

Perilune is a PVC-free, bleach-cleanable printed polyurethane. The print was inspired by a fine art lap loom handweaving by Suzanne Tick. Moon phase calendars from three important years of change in Suzanne's life were cut up and woven together.

## 4 — Perilune

**Content:** *Face:* 100% Polyurethane  
*Back:* 100% Polyester Knit

**Number of Colorways:** 12

*(shown here, top to bottom):* Pulsar, Space Age, Blue Moon, Gravity

**Abrasion:** Wyzenbeek 100,000 Double Rubs

**Special Characteristics:** Bleach Cleanable

The altered moon images create an organic pattern that has been printed with a matte ink on top of a lustrous ground. The result is a usable small-scale organic pattern that brings luster and energy to a space in any of its 12 vibrant colors.





5. Carreaux

## 5 ——— Carreaux

Carreaux is a panel and wrapped wall fabric with an elegant, refined look. It features a complex yarn that was created specifically for this pattern. The fabric is a combination of four different fibers, each of which responds to a different type of dye. This allows us to create very subtle tonal variations within a single fine yarn. The six warm and cool neutrals are designed to be used in serene and tranquil spaces.

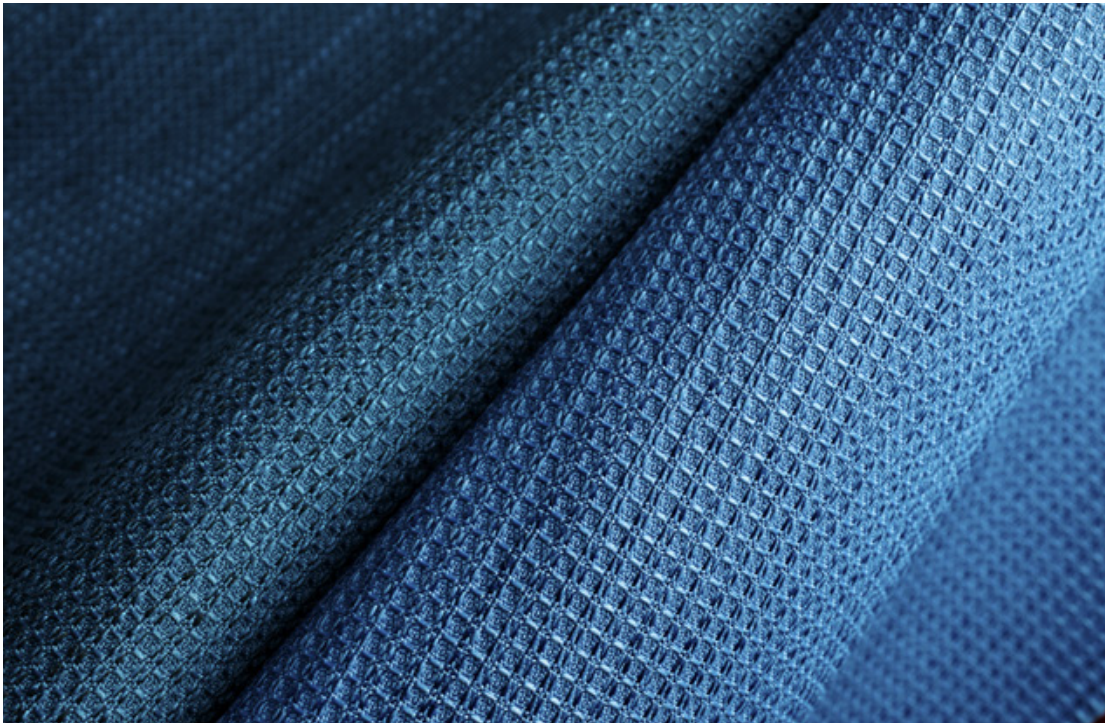
**Use:** Wrapped Wall/Panel  
**Content:** 94% Polyester + 3% Nylon + 3% Rayon  
**Number of Colorways:** 6  
*(shown here, top to bottom):* Ledger, Oriel, Finestra, Miter, Sidelite, Quadrant

## 6 ——— Complement

For Complement, we took a traditional honeycomb weave structure and softened it with organic movement. Randomly occurring accents, both dark and lustrous, create this movement and add depth to a seemingly straightforward solid. The long line of neutrals and bright and muted colors is designed for mixing and matching and to add texture and interest within a space. A multipurpose fabric, Complement can be used both horizontally as upholstery and vertically for panels and wrapped walls.

**Use:** Upholstery/Wrapped Wall/Panel  
**Content:** 100% Polyester  
**Number of Colorways:** 14  
*(shown here, left to right):* Peacock, Larkspur  
**Abrasion:** Wyzenbeek 65,000 Double Rubs

6. Complement





**Collection:** Starting Point  
**Designer:** Suzanne Tick

**Use:** Upholstery

Angulo combines a traditional epingle pile construction with an unexpected large-scale graphic. Inspired by contemporary building facades, the strong geometric pattern stretches and compacts vertically, creating dramatic impact.

# 7 — Angulo

**Content:** *Pile:* 100% Cotton  
*Ground:* 41% Polyester + 38% Viscose + 16% Linen + 5% Cotton  
**Number of Colorways:** 6  
*(shown here, left to right):* Bevel, Wenge  
**Abrasion:** Wyzenbeek 51,000 Double Rubs

An ombré stripe of tonal color runs in the opposite direction. The interaction of these two gradations creates movement and energy when applied to the curves of furniture. Designed for upholstery use, the cotton pile gives Angulo an extremely soft hand, but at 51,000 double rubs, it exceeds contract performance requirements.





## 8 — Substance

A 100% solution-dyed nylon upholstery, Substance utilizes a weave structure developed on the loom in our studio. Featuring a new thick boucle yarn with a softer hand than most heavyweight nylon yarns, Substance has a strong texture and good touch. This new yarn was colored specifically for this pattern with a heathered palette that adds a visual softness to the grid-like weave structure. It's bleach cleanable, features 50% recycled content and is rated to 100,000 double rubs.

**Use:** Upholstery  
**Content:** 50% Solution-Dyed Recycled Nylon (Preconsumer) + 50% Solution-Dyed Nylon  
**Number of Colorways:** 9  
*(shown here, left to right):* Foundation, Lodestone, Forge, Quartz, Chert  
**Abrasion:** Wyzenbeek 100,000 Double Rubs  
**Special Characteristics:** Bleach Cleanable



8. Substance

## 9 — Twining

Twining is a direct glue wallcovering and panel fabric with the classic fine texture of a menswear suiting fabric. Developed on the handloom in our studio, it utilizes a tight basketweave structure with a fine two-color boucle yarn. The seven neutral colorways create a clean vertical surface with a warm woven aesthetic.

**Use:** Direct Glue/Wrapped Wall/Panel  
**Content:** 100% Recycled Polyester (Preconsumer)  
**Number of Colorways:** 7  
*(shown here, left to right):* Bulrush, Silvery Strand

9. Twining







## Point to Point

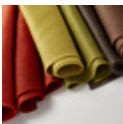
**Use:** Upholstery

**Content:** 79% Recycled Polyester (Postconsumer) + 21% Nylon

**Number of Colorways:** 7

**Abrasion:** Wyzenbeek 100,000 Double Rubs

**Special Characteristics:** Bleach Cleanable



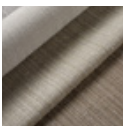
## Percept

**Use:** Upholstery/Wrapped Wall/Panel

**Content:** 81% Recycled Polyester (Postconsumer) + 19% Polyester

**Number of Colorways:** 19

**Abrasion:** Wyzenbeek 75,000 Double Rubs



## Soft Ridge

**Use:** Direct Glue Wall

**Content:** 100% Polyester (Recycled content varies by color)

**Number of Colorways:** 7



## Perilune

**Use:** Upholstery

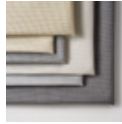
**Content:** *Face:* 100% Polyurethane

*Back:* 100% Polyester Knit

**Number of Colorways:** 12

**Abrasion:** Wyzenbeek 100,000 Double Rubs

**Special Characteristics:** Bleach Cleanable

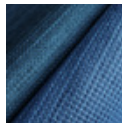


## Carreaux

**Use:** Wrapped Wall/Panel

**Content:** 94% Polyester + 3% Nylon + 3% Rayon

**Number of Colorways:** 6



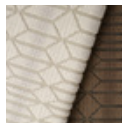
## Complement

**Use:** Upholstery/Wrapped Wall/Panel

**Content:** 100% Polyester

**Number of Colorways:** 14

**Abrasion:** Wyzenbeek 65,000 Double Rubs



## Angulo

**Use:** Upholstery

**Content:** *Pile:* 100% Cotton,

*Ground:* 41% Polyester + 38% Viscose + 16% Linen + 5% Cotton

**Number of Colorways:** 6

**Abrasion:** Wyzenbeek 51,000 Double Rubs



## Substance

**Use:** Upholstery

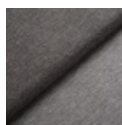
**Content:** 50% Solution-Dyed Recycled Nylon

(Preconsumer) + 50% Solution-Dyed Nylon

**Number of Colorways:** 9

**Abrasion:** Wyzenbeek 100,000 Double Rubs

**Special Characteristics:** Bleach Cleanable



## Twining

**Use:** Direct Glue/Wrapped Wall/Panel

**Content:** 100% Recycled Polyester (Preconsumer)

**Number of Colorways:** 7