

bevy work leg tables



bevy work leg tables

product information

Bevy is a dynamic table platform that enables endless configuration. A variety of heights and sizes give people the ability to work in a variety of ways in a space. The unique wood-leg version brings a crafted elegance, introducing a more emotional response to otherwise traditionally stagnant environments.

Bevy enables personalization within every configuration through Studio TK's finishes program. Four base finishes, including polished aluminum and three powder-coat colors, achieve true customization and durability in high-use areas like cafés and dining spaces. Several top sizes in five different top surface finishes create an array of choice. A substantial frame under-structure allows for easy wire management, along with providing strength and stability.

Designer Mario Ruiz	Typology Work Tables
Collection StudioTK	Year 2017

Collection



Fabrics & Finishes

Wood Leg Finishes

Basque White Oak, Natural Oak, Sierra, Cocoa Brown, Truffle

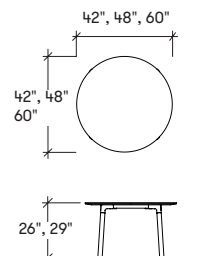
Casting Finishes

Polished Aluminum and three powder-coat finishes available: Very White, Granite and Ebony

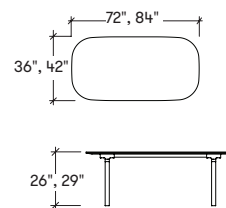
Table Surface Finishes

Laminate, Veneer, Solid Surface or Back-painted Glass

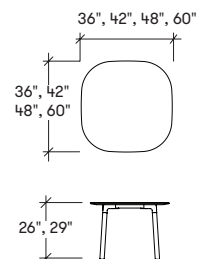
Dimensions



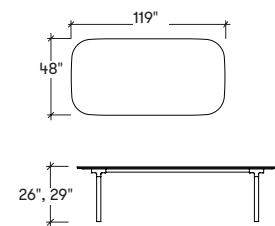
Bevy Round Work Leg Table
STETJ



Bevy Rectangular Work Leg Table
STETM



Bevy Square Work Leg Table
STETE



Bevy Rectangular Conference Leg Table
STETNL

Studio TK

3940 US 70 Business Hwy, West
Clayton, North Carolina 27520, USA
Tel: 855.941.0262 / Fax: 919.464.2927
www.studiotk.com

©, TM Trademarks of teknion corporation and/or its subsidiaries or licensed to it. Patents may be pending. Some products may not be available in all markets. Contact your local Studio TK representative for availability.
CAN/US/INT 07-17 © Teknion 2017 Printed in Canada