

Name

Refraction

Designer

Suzanne Tick

Style No.

4047

Use

Upholstery

Content

100% Polyester

Abrasion

Wyzenbeek

75,000 double rubs

Environmental

Oeko-Tex 100

Certified

Oeko-Tex 100, Cat II

Heavy Metal Free



Wavelength 4047-02



Wavelength 4047-02



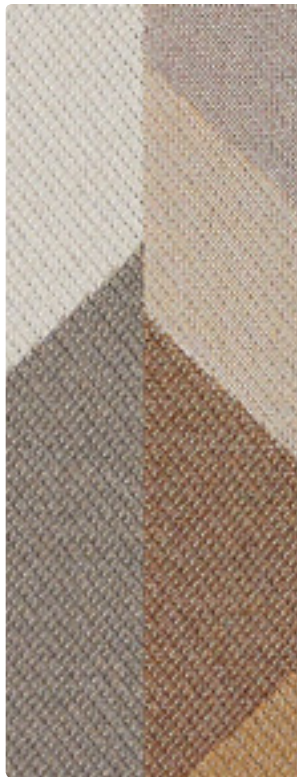
Frequency 4047-03



Prism 4047-04



Lightwave 4047-01



Boundary 4047-05



Oblique 4047-06

Refraction

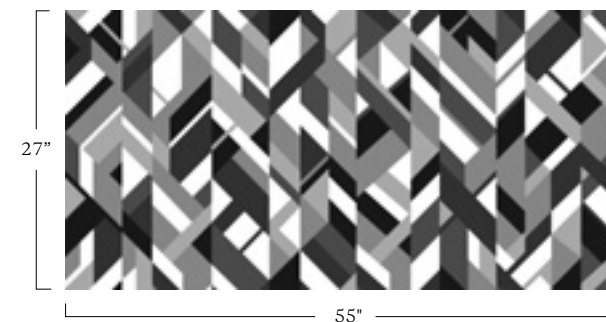


Refraction by Luum

Refraction is a large-scale statement pattern emulating the movement of light and shadow. Calm neutrals that merge and diverge across the fabric soften multi-directional planes of color.

Name	—————	Refraction
Style No.	—————	4047
Designer		Suzanne Tick
Specification		Use: Upholstery Content: 100% Polyester Weight: 11.25 oz per linear yard Width: 55" Pattern Repeat: Horizontal 55" Vertical 27" Random Match Directional: Yes
Finish		None
Performance		Abrasion: ASTM D4157 Wyzenbeek 75,000 double rubs Breaking Strength: ASTM D5034 Warp 412.3 lbf, Fill 347.9 lbf Seam Slippage: ASTM D4034 Warp 46.2 lbf, Fill 22 lbf Colorfastness to Light: AATCC 16, Grade 4.5 at 40 Hours Colorfastness to Crocking: AATCC 8, Wet Class 5, Dry Class 5 Pilling: ASTM D3511 (Brush Pill), Class 4
Maintenance		WS, Clean with either a water-based or solvent based cleaning agent.
Flame Retardancy		Cal TB 117-2013
Environmental		Oeko-Tex 100 Certified Oeko-Tex 100, Cat II Heavy Metal Free
Origin		Germany

Dye lots may vary slightly from samples shown. Samples shown off the bolt.



Canada
877.705.LUUM
luumtextiles.ca

USA
877.705.LUUM
luumtextiles.com

International
919.464.2922
luumtextiles.com

cdn/us/int/02-17

© Teknion 2017.

* Trademarks of Teknion Corporation and/or its subsidiaries or licensed to it.
*Certification Marks owned by the Association for Contract Textiles, Inc.

NA-SC-305-4047