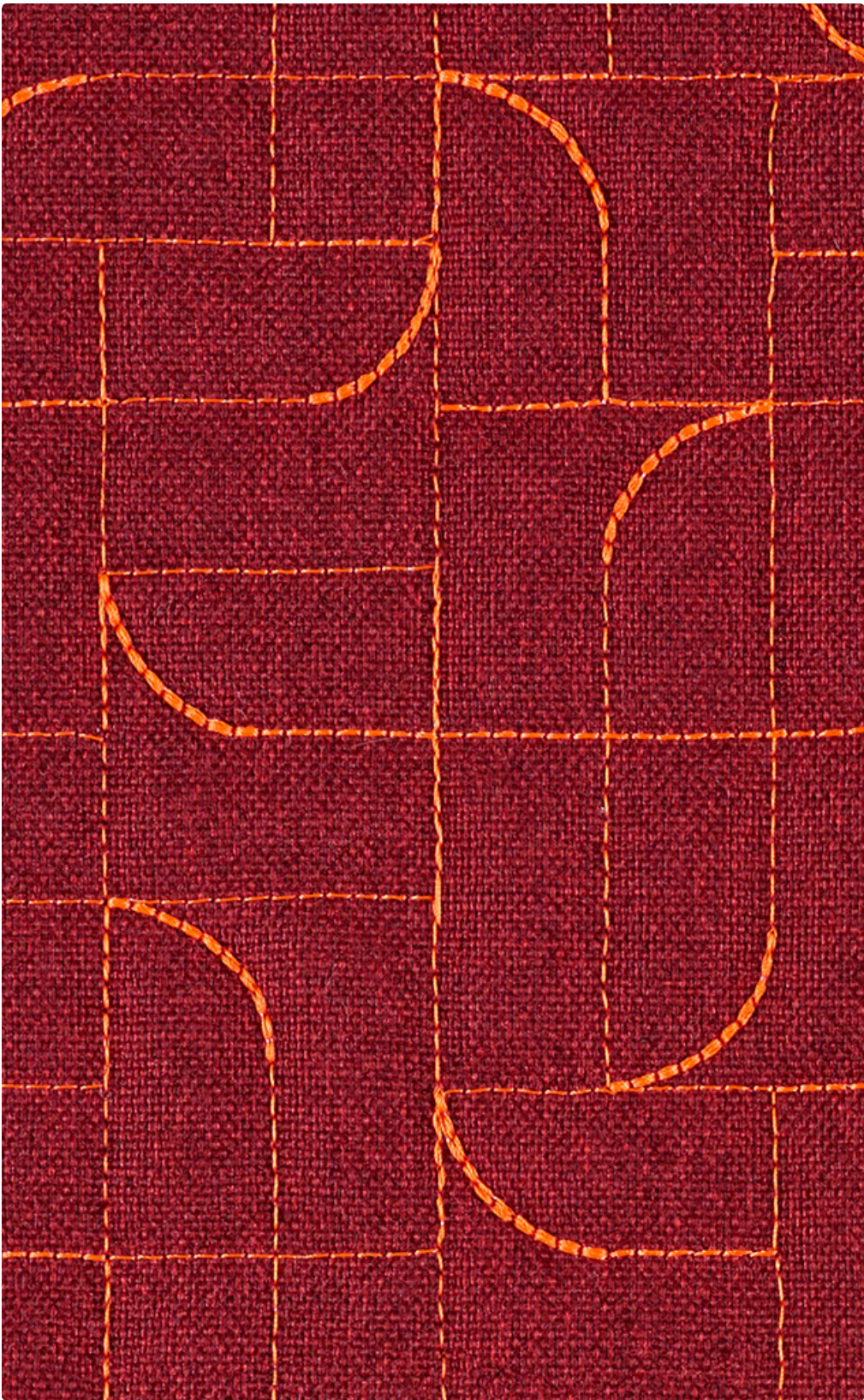


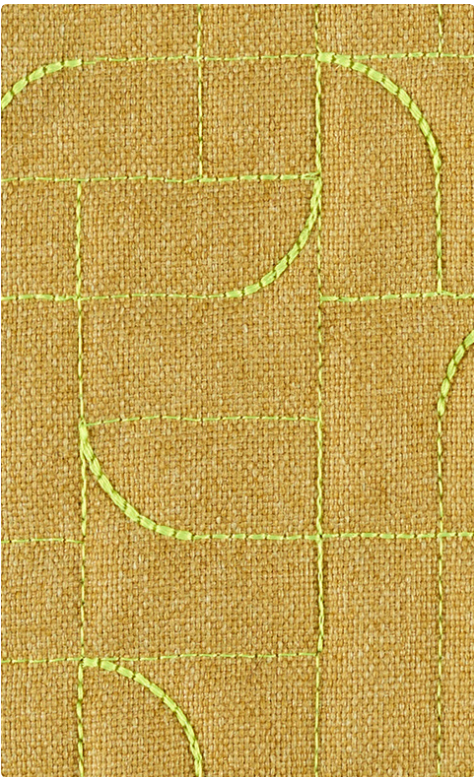
LUUM

Arc Angle

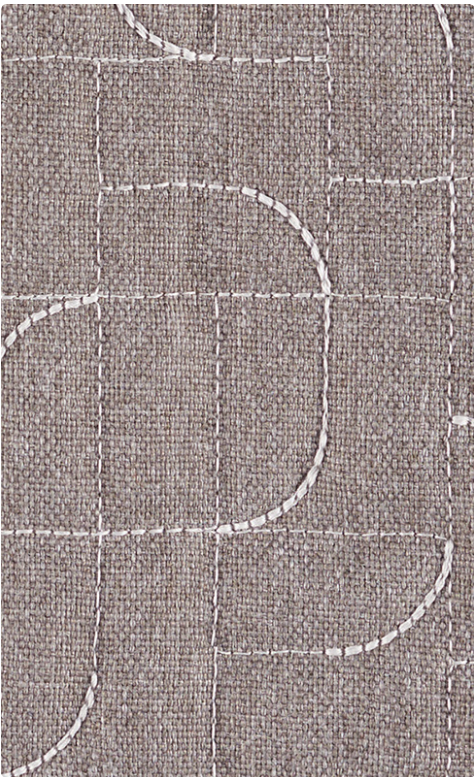
- Name**
Arc Angle
- Designer**
Suzanne Tick
- Style No.**
4062
- Use**
Upholstery
Wrapped Wall
- Content**
100% Polyester Face
50% Nylon +
50% Polyester Stitching
100% Polyfill Back
- Abrasion**
Wyzenbeek
100,000 double rubs
- Environmental**
Heavy Metal Free
PFOA/PFOS Free
Stain Repellent



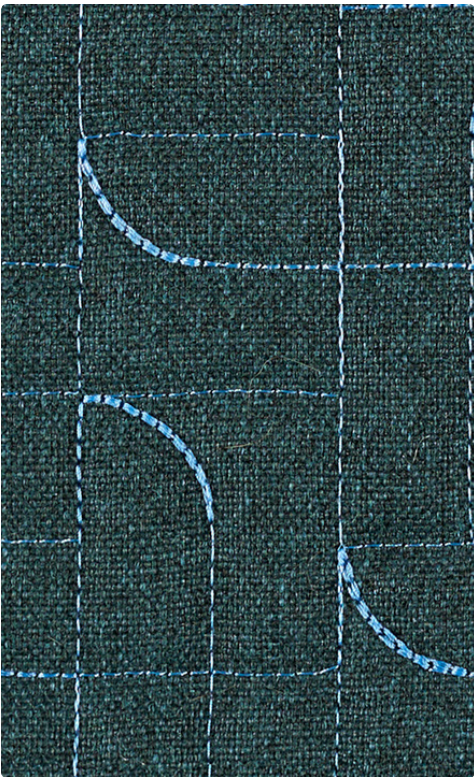
Hestia 4062-05



Theia 4062-03



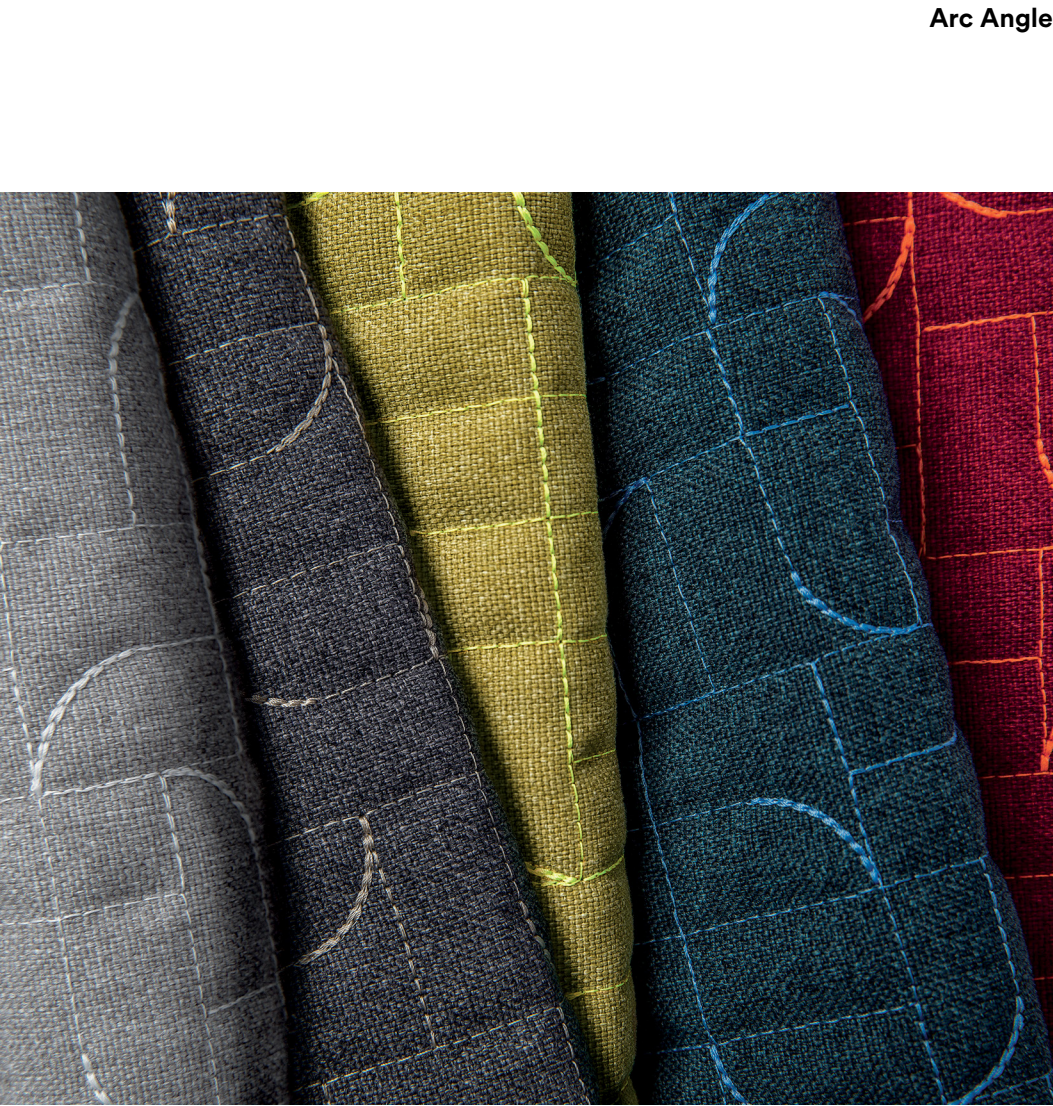
Selene 4062-01



Proteus 4062-04



Erebus 4062-02



Arc Angle

by Luum

Dimension is the key to warming up an environment. Arc Angle nods to tradition by applying quilting through a contemporary lens. Using performance materials and industrial machinery, Arc Angle softens space with a technical objective.

Multi-purpose, multi-directional and customizable, Arc Angle succeeds Navigate as an evolution in material hybridization. The grid is softened and deconstructed with curvilinear stitching, that fades and intensifies. Nylon stitching merges a Heather Tech base cloth with non-woven polyester. The result is a highly tactile, dimensional product.

Name

Style No.

Designer

Specification

Finish

Performance

Acoustical Rating

Flame Retardancy

Maintenance

Environmental

Origin

Arc Angle

4062

Suzanne Tick

Use: Upholstery/Wrapped Wall
Content: 100% Polyester Face
50% Nylon + 50% Polyester Stitching
100% Polyfill Back
Weight: 28.6 oz per linear yard
Embroidered Width: 52" +/- 1"
Pattern Repeat: Horizontal 10.5" Vertical 7.5" Random Match
Directional: No

Stain Repellent

Abrasion: ASTM D4157 Wyzenbeek 100,000 double rubs
Breaking Strength: ASTM D5034 Warp 378.3 lbf, Fill 287.6 lbf
Seam Slippage: ASTM D4034 Warp 90 lbf, Fill 71 lbf
Colorfastness to Light: AATCC 16, Grade 4 at 40 Hours
Colorfastness to Crocking: AATCC 8, Wet Class 4.5, Dry Class 4.5
Pilling: ASTM D3511 (Brush Pill), Class 5

Fabric Transparency 0.85, NRC 0.75 tested to ISO 10534-2 standards

Cal TB 117-2013
ASTM E84 Unadhered Class A or 1

WS, Clean with either a water-based or solvent-based cleaning agent.

Heavy Metal Free
PFOA/PFOS Free Stain Repellent

USA

Dye lots may vary slightly from samples shown. Samples shown off the bolt.



The following are available base and thread color options for customization. For additional information please contact your local Luum sales representative.

Graphic shows one full repeat

Luum Stitch Thread Colors			Heather Tech Base Colors							
White 30001	Ashes 35070	Maple 34170	Oat Tech 4059-03	Dust Tech 4059-01	Topaz Tech 4059-02	Flax Tech 4059-04	Loam Tech 4059-06	Sagebrush Tech 4059-10		
Neon Orange 36245	Old Glory Red 34212	Fl Cerise 36999	Silt Tech 4059-05	Crag Tech 4059-07	Basalt Tech 4059-08	North Sea Tech 4059-22	Onyx Tech 4059-23	Obsidian Tech 4059-24		
Lemon 67028	Neon Yellow 36731	Neon Green 36289	Clear Tech 4059-19	Ocean Tech 4059-21	Loch Tech 4059-20	Loden Tech 4059-09	Law Tech 4059-18	Beetroot Tech 4007-16		
Blue 34466	Cub 67050	Black 56033	Sundew Tech 4059-12	Meadow Tech 4059-11	Rose Tech 4059-13	Raspire Tech 4059-14	Thistle Tech 4059-17	Madder Tech 4059-15		

Canada
877.705.LUUM
luumtextiles.ca

USA
877.705.LUUM
luumtextiles.com

International
919.464.2922
luumtextiles.com

cdn/us/int/05-18

© Luum™ 2018, all rights reserved.
*,™ Trademarks used under license by Luum™, Arc Angle™
*Certification Marks owned by the Association for Contract Textiles, Inc.