

# LUUM

## Equilux

**Name**  
Equilux

**Designer**  
Suzanne Tick

**Style No.**  
4060

**Use**  
Upholstery

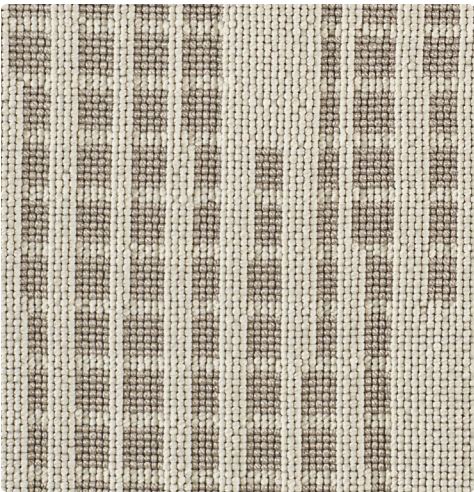
**Content**  
54% Rayon +  
43% Wool +  
3% Nylon

**Abrasion**  
Martindale  
75,000 cycles

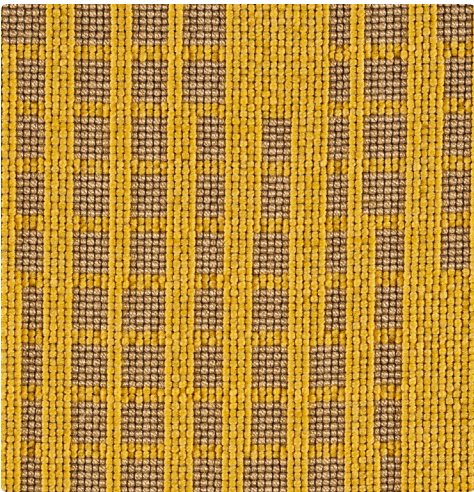
**Environmental**  
Heavy Metal Free



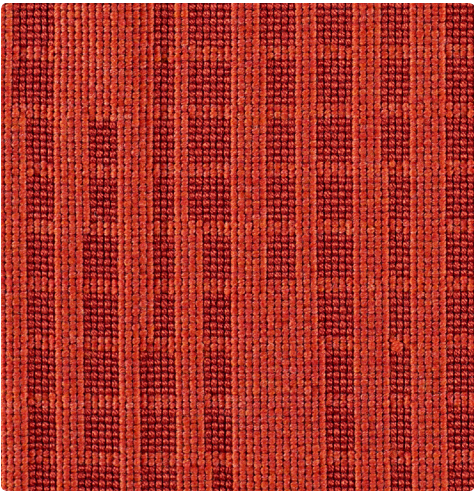
Solstice 4060-03



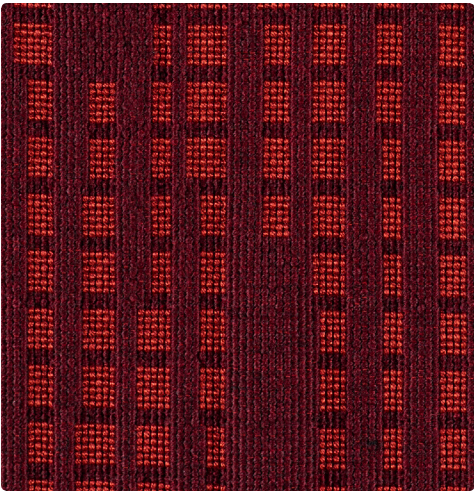
Moonbow 4060-04



Corona 4060-05



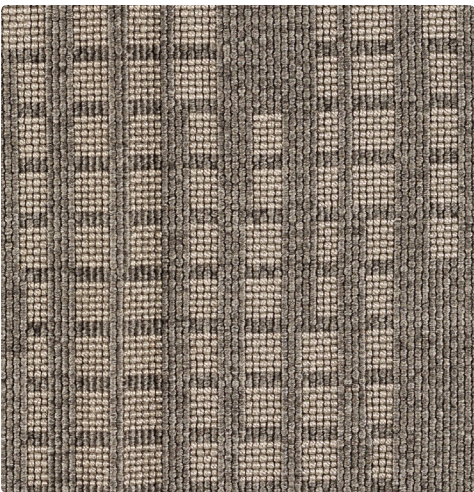
Sunspot 4060-08



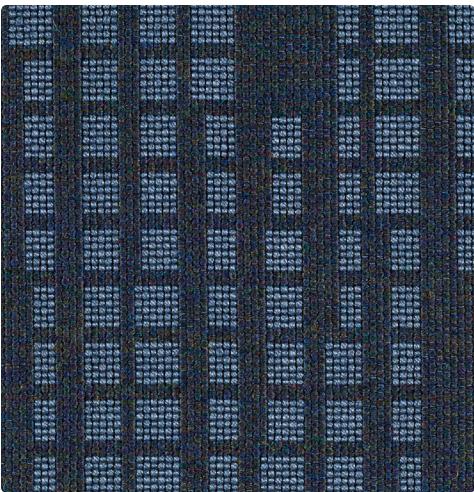
Kindle 4060-07



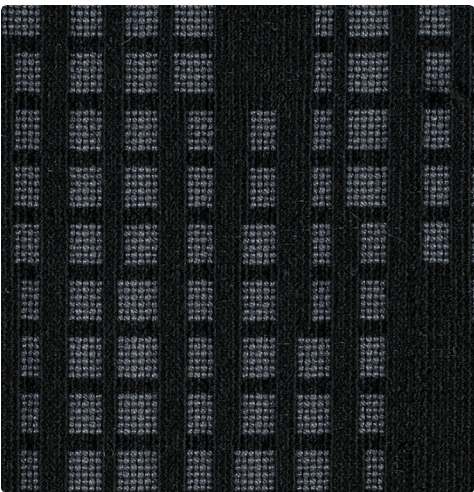
Solstice 4060-03



Diamond Dust 4060-02



Blue Hour 4060-06



Eventide 4060-01



# Equilux by Luum

Based on the passage of light through geometric facades, Equilux’s large-scale pattern is created through the traditional method of moiré. By layering grid patterns, dynamic movement is created and moiré becomes modern. The subtle transition between matte wool and lustrous rayon gives equal significance to natural and synthetic fibers. Wool content feeds an emotional and sensorial desire for connection to the natural world, while the integration of synthetic fibers reflects our relationship to the built environment.

Name

Equilux

Style No.

4060

Designer

Suzanne Tick

Specification

**Use:** Upholstery  
**Content:** 54% Rayon + 43% Wool + 3% Nylon  
**Weight:** 23.97 oz per linear yard  
**Width:** 53"  
**Pattern Repeat:** Horizontal 26.5" Vertical 32.5" Random Match  
**Directional:** Yes

Finish

Acrylic Backing

Performance

**Abrasion:** ASTM D4966 Martindale 75,000 cycles  
**Breaking Strength:** ASTM D5034 Warp 295.7 lbf, Fill 131.6 lbf  
**Seam Slippage:** ASTM D4034 Warp 52.2 lbf, Fill 81.4 lbf  
**Colorfastness to Light:** AATCC 16, Grade 4.5 at 40 Hours  
**Colorfastness to Crocking:** AATCC 8, Wet Class 3, Dry Class 4  
**Pilling:** ASTM D3511 (Brush Pill), Class 4

Flame Retardancy

Cal TB 117-2013, UFAC Class 1

Maintenance

S, Clean with a dry cleaning or solvent-based cleaning agent.  
Do not use water-based cleaning products.

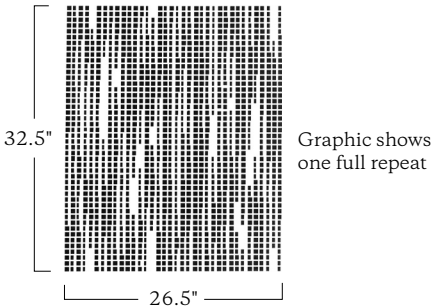
Environmental

Heavy Metal Free

Origin

USA

Wool is a natural product.  
Color variations are part of the natural beauty of wool and are not considered a defect.  
Dye lots may vary slightly from samples shown. Samples shown off the bolt.



**Canada**

877.705.LUUM  
luumtextiles.ca

**USA**

877.705.LUUM  
luumtextiles.com

**International**

919.464.2922  
luumtextiles.com

cdn/us/int/05-18

© Luum™ 2018, all rights reserved.  
\*,™ Trademarks used under license by Luum™, Equilux™  
\*Certification Marks owned by the Association for Contract Textiles, Inc.