

**Name**

Iterate

**Designer**

Suzanne Tick

**Style No.**

4028

**Use**

Upholstery

**Content**

85.3% Polyester +  
14.7% Polyacrylic

**Abrasion**

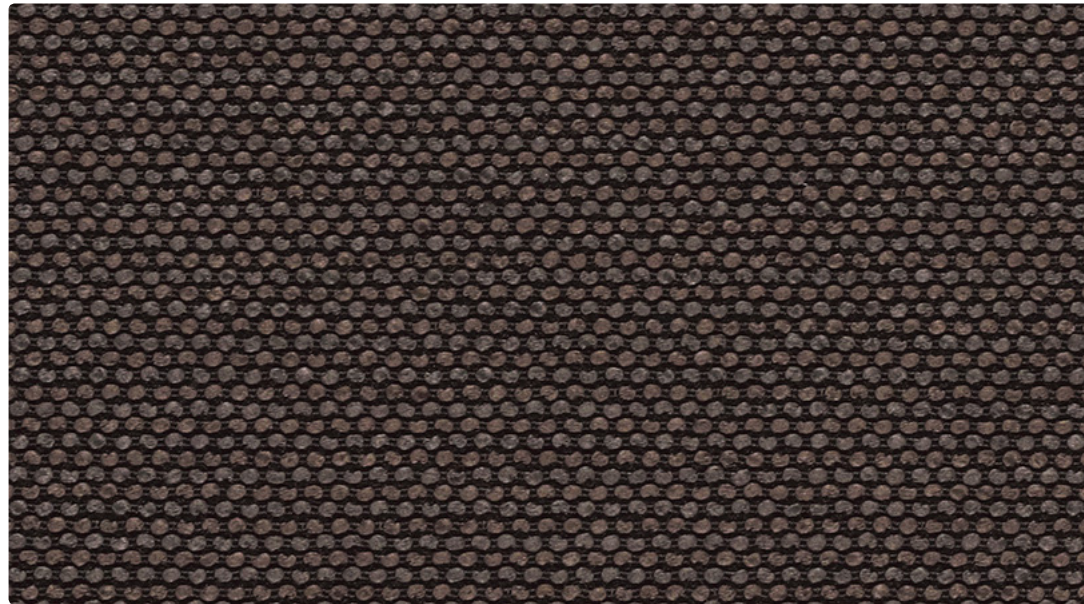
Wyzenbeek  
51,000 double rubs

**Special**

**Characteristics**  
Bleach Cleanable

**Environmental**

Chemical Finish Free  
Oeko-Tex 100, Cat. II



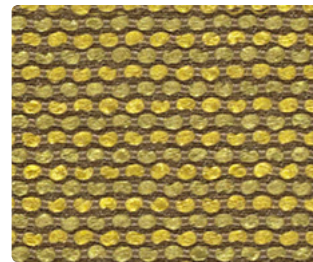
Rumble 4028-01



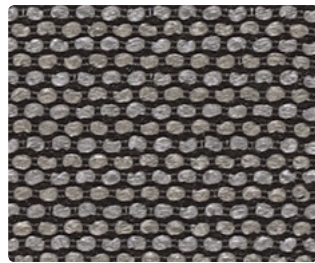
Echo 4028-02



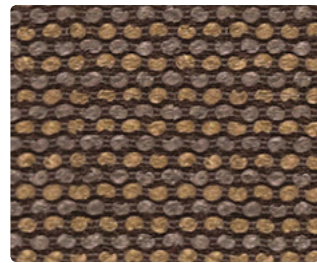
Chime 4028-03



Signal 4028-04



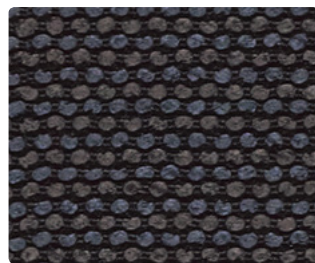
Vibe 4028-05



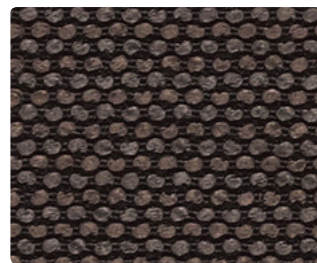
Cite 4028-06



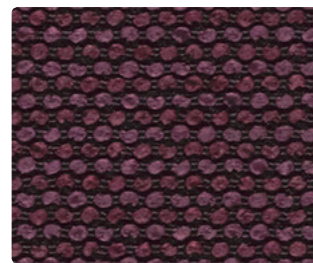
Rattle 4028-07



Cast 4028-08



Rumble 4028-01



Pulse 4028-09

**Name**

**Iterate**

**Style No.**

**4028**

**Designer**

Suzanne Tick

**Specification**

**Use:** Upholstery  
**Content:** 85.3% Polyester + 14.7% Polyacrylic  
**Weight:** 17.4 oz per linear yard  
**Width:** 56"  
**Pattern Repeat:** None  
**Directional:** Yes

**Finish**

None

**Performance**

**Abrasion:** ASTM D4157 Wyzenbeek 51,000 double rubs  
**Breaking Strength:** ASTM D5034 Warp 352 lbf, Fill 344 lbf  
**Seam Slippage:** ASTM D4034 Warp 115 lbf, Fill 116 lbf  
**Colorfastness to Light:** AATCC 16, Grade 5 at 40 Hours  
**Colorfastness to Crocking:** AATCC 8, Wet Class 4.5, Dry Class 4.5  
**Pilling:** ASTM D3511 (Brush Pill), Class 4

**Flame Retardancy**

Cal TB 117-2013, NFPA 260

**Maintenance**

WS, Clean with either a water-based or solvent-based cleaning agent.  
Bleach Cleanable: 9% (10:1 Ratio), wipe with water after solution

**Environmental**

Chemical Finish Free  
Oeko-Tex 100, Cat. II

**Origin**

Germany

Dye lots may vary slightly from samples shown. Samples shown off the bolt.



**Canada**  
877.705.LUUM  
[luumtextiles.ca](http://luumtextiles.ca)

**USA**  
877.705.LUUM  
[luumtextiles.com](http://luumtextiles.com)

**International**  
919.464.2922  
[luumtextiles.com](http://luumtextiles.com)

cdn/us/int/05-16

© Teknion 2016.  
\*,™ Trademarks of Teknion Corporation and/or its subsidiaries or licensed to it.  
\*Certification Marks owned by the Association for Contract Textiles, Inc.